

Jenny Grosse
Geraldton Little Athletics Centre
PO Box 641
Geraldton WA 6531

Karen Godfrey
City of Greater Geraldton
PO Box 101
Geraldton WA 6530

10.01.13

Dear Karen

DRAFT SPORTING FUTURES REPORT

Please be advised that Geraldton Little Athletics Centre objects to the removal of the 2 sheds and long jump pits as shown in the current report.

I have attended many meetings since 2008 with regard the 8th St Precint upgrade. At each occasion I have explained that Geraldton Little Athletics Centre is happy with their current set up.

When the original report done by ABV Leisure Consultancy in 2007 was presented to Geraldton Ratepayers in 2008 we were asked – What are your requirements. At the time we stated that we had no major requirements and that we could continue as we were. Even with a growth in numbers we did not require any additional space.

When the next draft was presented it was unsatisfactory to us due to loss of land and event sites. At this time I was instructed by the City to contact dlanfear@davislangdon.com.au. Attached is a copy of the email sent to him from Geraldton Little Athletics Centre. It again explained that we were happy with our current setup and did not require any additional land but wished to retain what we have.

The most current Draft Sporting Futures Report indicates that we will lose a portion of land on which we have field event sites, our 2 sheds and our triple and long jump sites. The plan indicates that the long and triple sites have been relocated to an area that does not suit. We require the run up to run in a northerly direction. The plan also shows additional event sites inside the track. The number of sites shown inside the track is more than will actually fit. It shows throw and jumps sites overlapping which is not acceptable.

PROPOSAL

Geraldton Little Athletics Centre again proposes that the area used by them remains the same as it is currently.

The map attached shows the lay out we require, which is

An eight lane 400m track which also incorporates a 12 lane 100m track

Inside the track : 2 high jump sites

1 javelin site

1 discus site

1 shot put site

Outside the track: 2 synthetic triple jump pits

2 grass long jump pits. All of which run in the correct direction

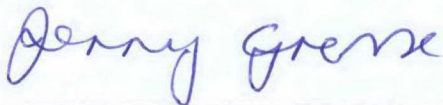
1 shot site

1 discus site

1 javelin site

Existing Clubrooms and 2 sheds

Yours sincerely



Jenny Grosse

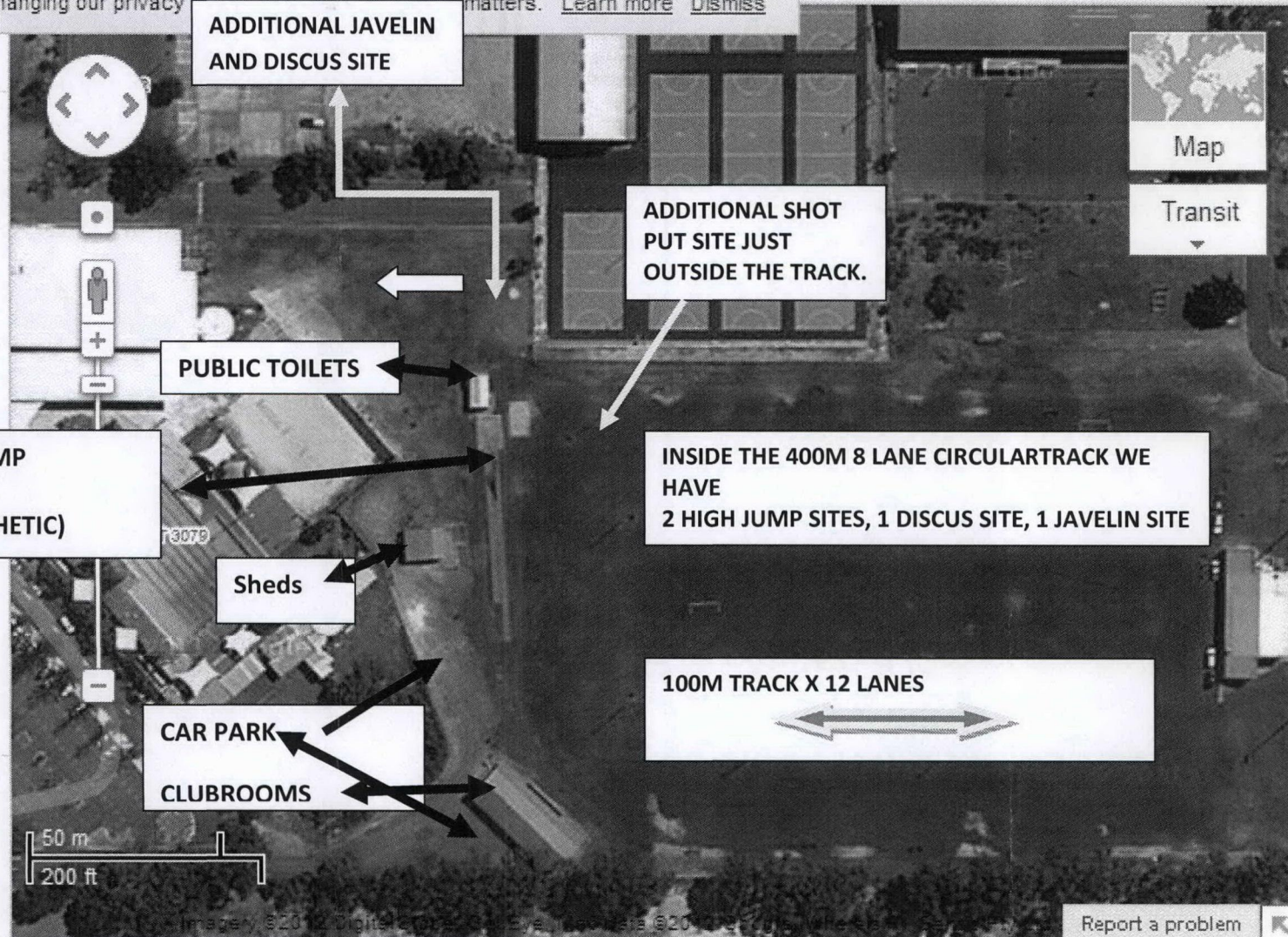
Chairperson

Geraldton Little Athletics Centre

Eighth Street, Wonthella, Western Australia



changing our privacy... This stuff matters. [Learn more](#) [Dismiss](#)



ADDITIONAL JAVELIN AND DISCUS SITE

ADDITIONAL SHOT PUT SITE JUST OUTSIDE THE TRACK.

PUBLIC TOILETS

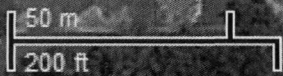
LONG/ TRIPLE JUMP
2 PITS, 4 LANES
(2 GRASS, 2 SYNTHETIC)

Sheds

INSIDE THE 400M 8 LANE CIRCULAR TRACK WE HAVE
2 HIGH JUMP SITES, 1 DISCUS SITE, 1 JAVELIN SITE

100M TRACK X 12 LANES

CAR PARK
CLUBROOMS



Report a problem

Westnet Webmail Plus

jgrosse@westnet.com.au

Geraldton Little Athletics Centre

Tuesday, 14 February 2012 1:34:07 PM

From: jgrosse@westnet.com.au

To: dlanfear@davislangdon.com.au

Attachments: Athletics.docx (540.5KB)

Hello Dave,

Sorry for the delay in getting back to you.

I have been unable to locate our copy of the Geraldton Greenough Eighth St Sporting Precinct Master Plan. It was passed around the committee and has not been put back in the clubrooms. The lady who has it is out of the state.

I have instead done a mud map to show what we currently have. As stated on the phone we are happy with the amount of land we have and do not want it reduced.

We have a 400 m 8 lane track which also incorporates a 12 lane 100m track
Inside the track we have 2 high jump sites, 1 javelin site, 1 discus site and 1 shot put site.

We cannot place any more sites inside the track.

At the end on the synthetic runup and pit is the dilapidated public toilets. Whilst I believe they need to be replaced they are not a requirement for us as we have our own clubrooms and toilets.

We also do not want the long jump and triple jump moved from its existing location. The city plan showed the pits moved to between the golf club and the 100m track.

When we and the schools run the sports carnivals we set up the tents for spectators and athletes along the 100m track

Between the firemans run, netball and public toilets we have an additional discus and javelin site. We require approx 45 m in length from the netball fence.

We also have just outside the track a second shot put site.

Regards

Jenny Grosse

Chairperson

Geraldton Little Athletics Centre