

INDARRA



INDARRA



MULLEWA RAILWAY STATION



ARDINGLY SIDING RAMP



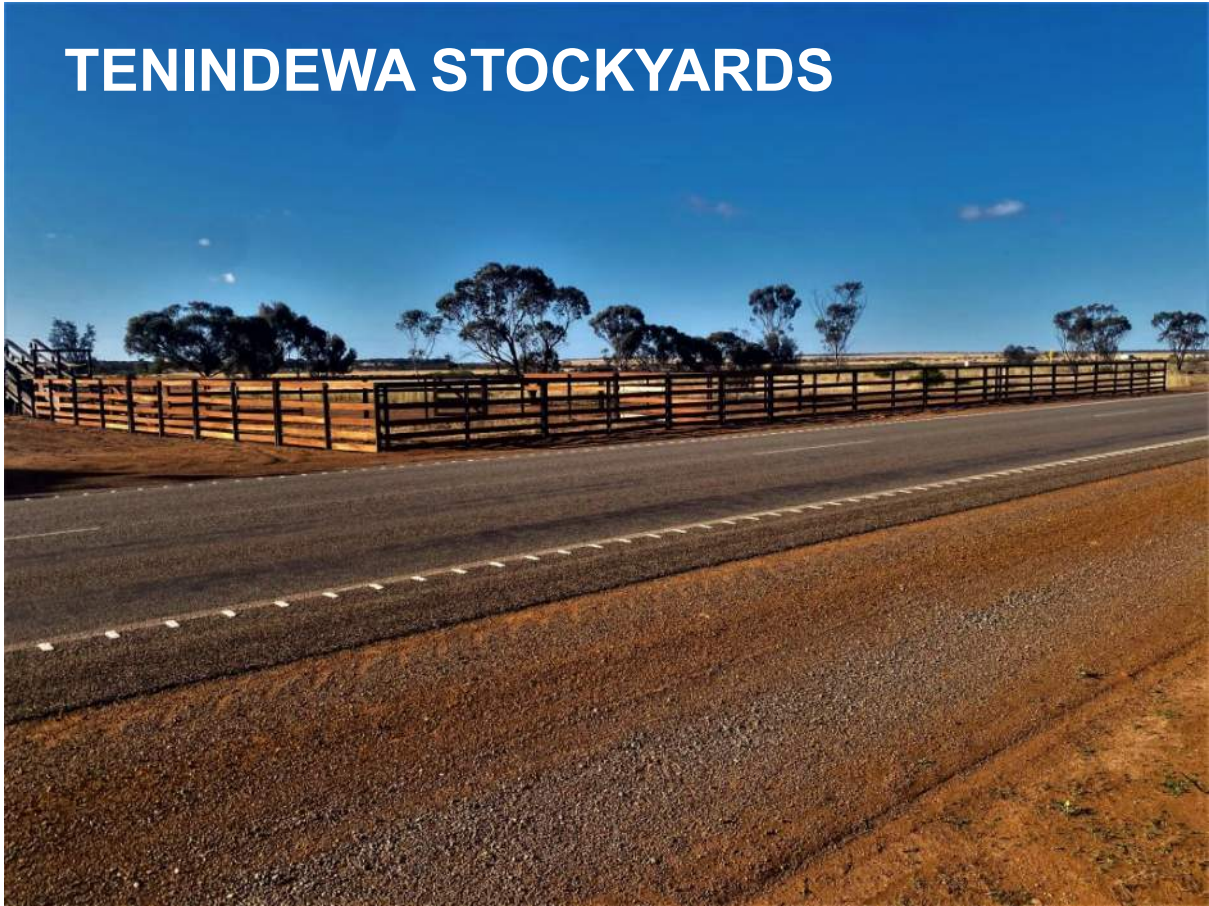
ARDINGLY STAND PIPE

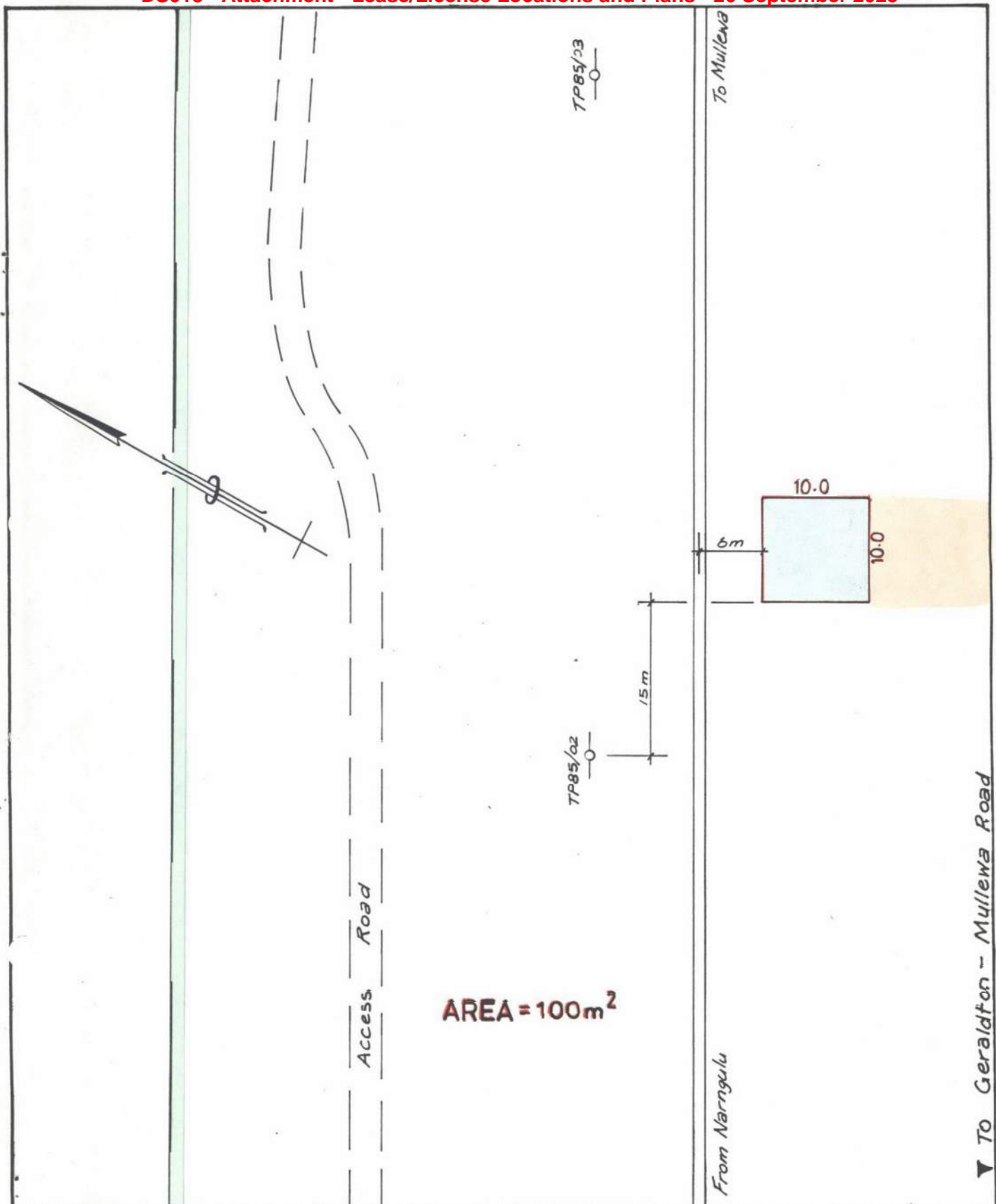


ARDINGLY STAND PIPE



TENINDEWA STOCKYARDS





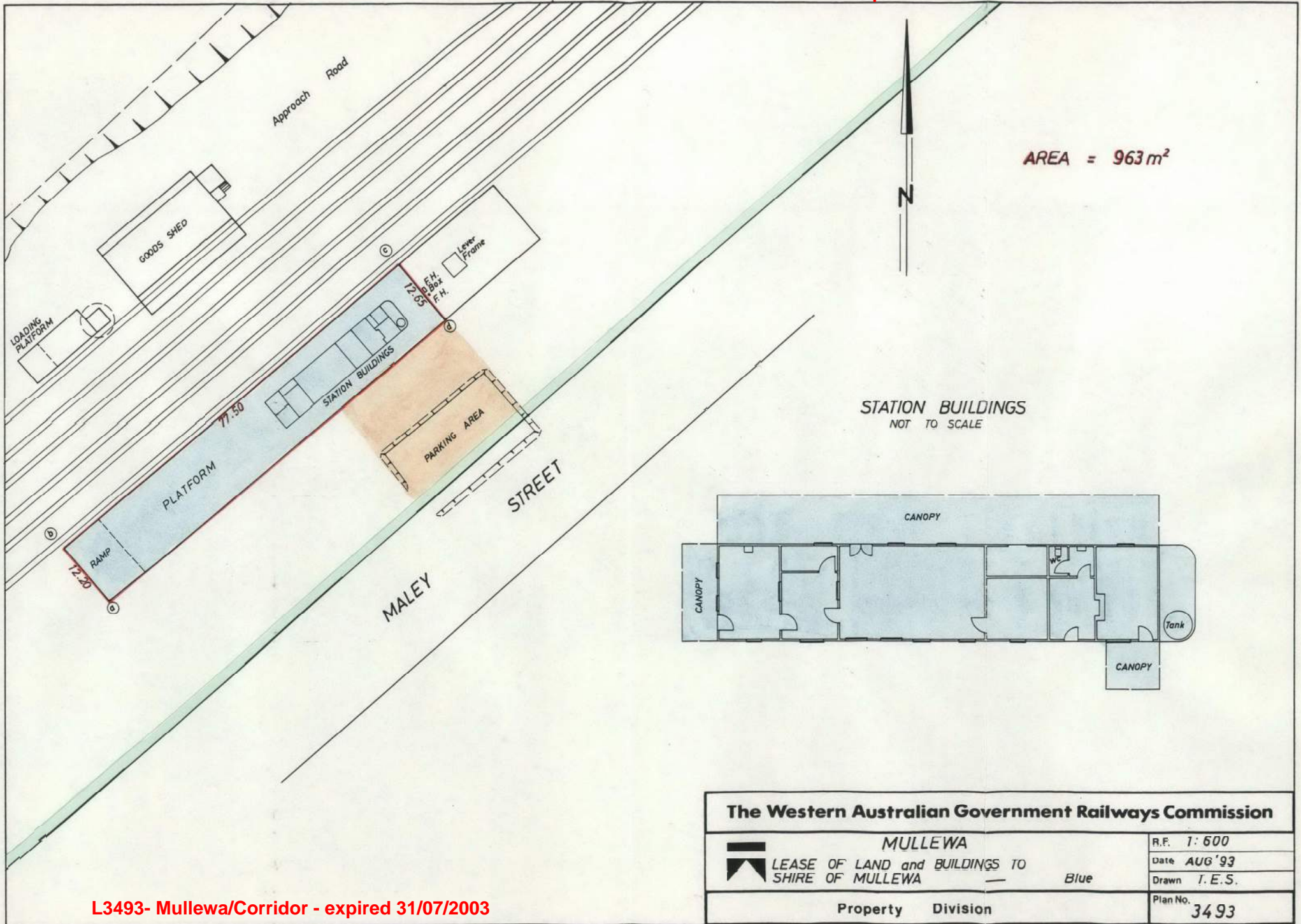
Civil Engineering Branch

Western Australian Government Railways Commission

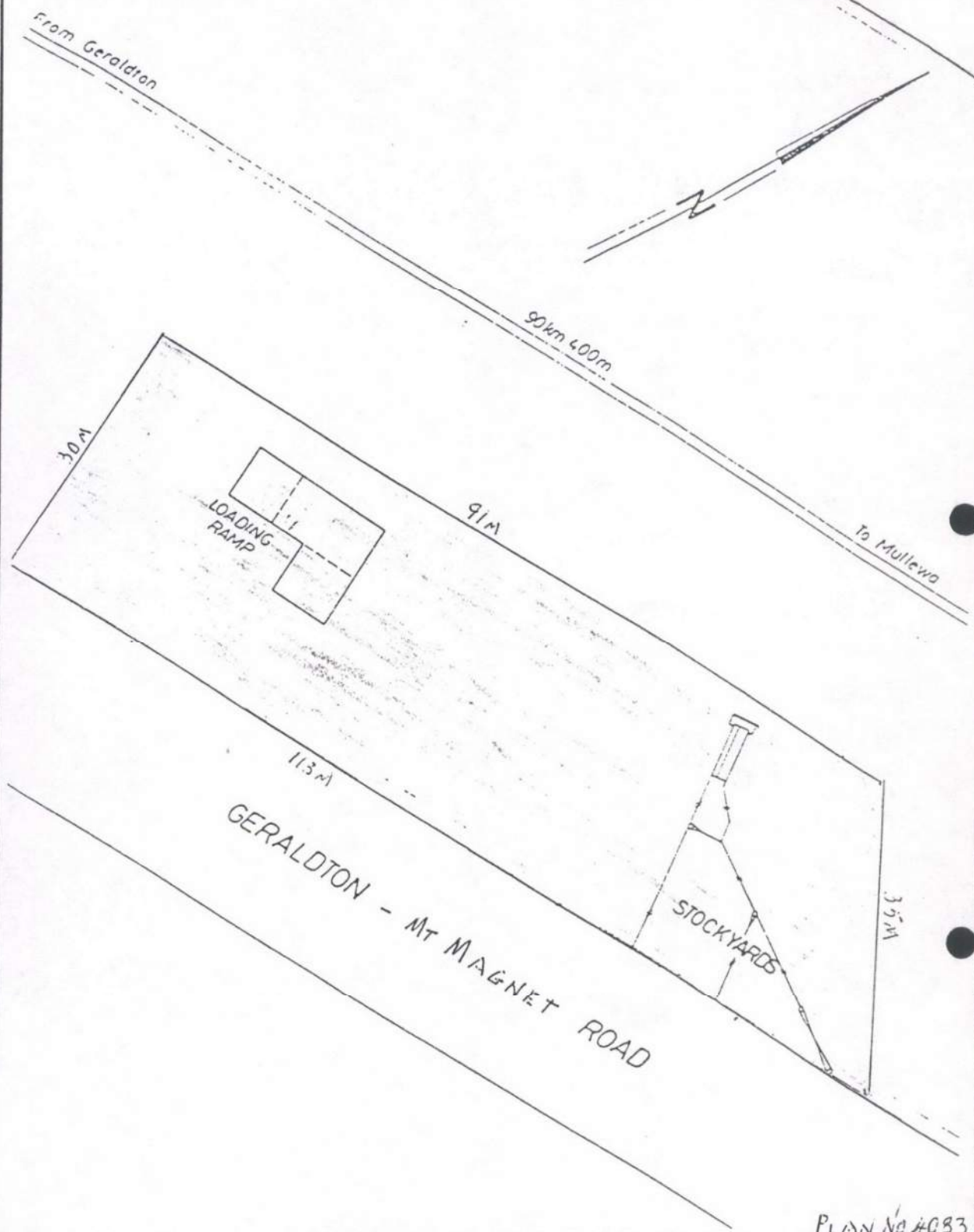


| | | |
|--|--------------------------|------------------------|
| Description INDARRA LEASE OF LAND TO SHIRE OF MULLEWA - Blue | Drawn B.A.W. | Date JUN '90 |
| | File NO L 5830 | RF 1: 500 |
| | Plan NO 5830 | |

DS018 - Attachment - Lease/License Locations and Plans - 26 September 2023



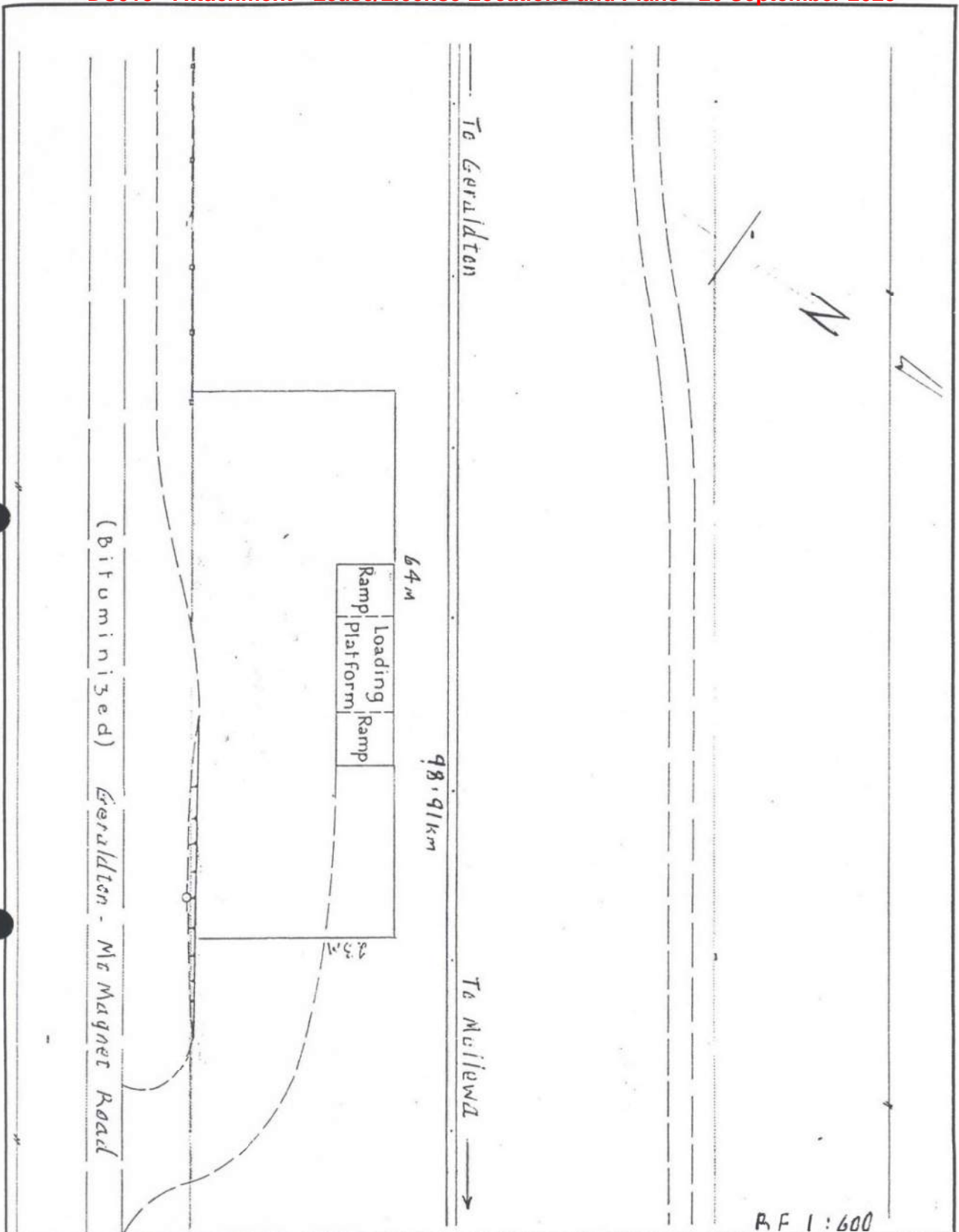
L3493- Mullewa/Corridor - expired 31/07/2003



| | | |
|--|--|--------------------|
| WESTERN AUSTRALIAN GOVERNMENT RAILWAYS COMMISSION | | PLAN No A083 |
| TENINDEWA | | SHEET 1 OF 2 |
| LEASE OF LAND, LOADING RAMP AND STOCKYARDS TO SHIRE OF MULLEWA | | Date: October 1996 |
| BLUE | | AREA : 3060 m2 |
| | | R.F. 1 : 600 |

DATAIDDCSPLANS 5AM_E14

L4083 - Tenindewa/Corridor - expired 30/09/2006



Western Australian Government Railways Commission

ARDINGLY
 LEASE OF LAND & LOADING RAMP TO SHIRE OF MULLEWA.
 BLUE

AREA : 1472 m2
 Plan no 4083
 Sheet 2 of 2
 October 1996

DS018 - Attachment - Lease/License Locations and Plans - 26 September 2023

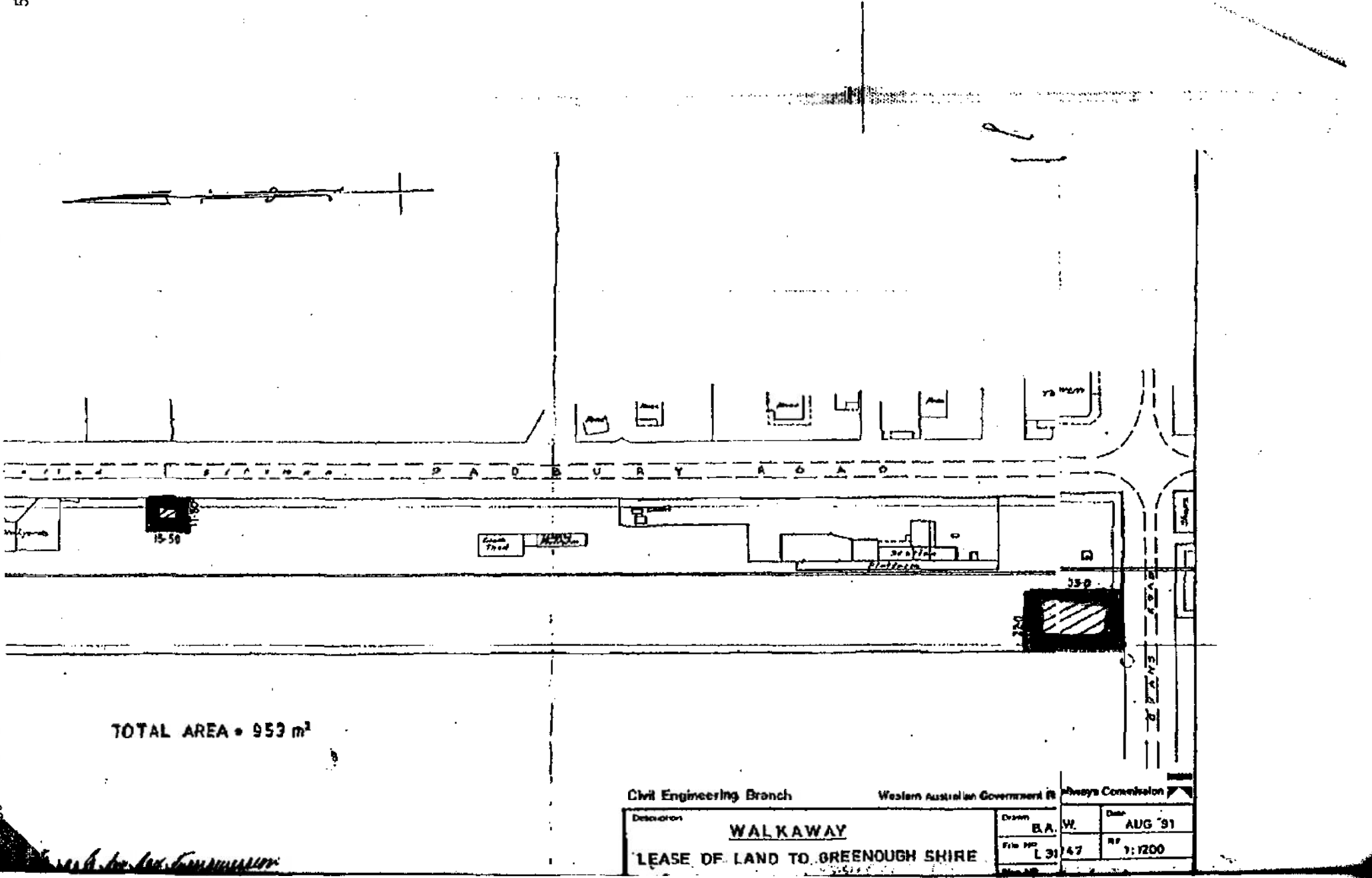
5.

P. 09/03

FRX NO. 61 Y 4815333

STANTON HILLIER PARKER

MON 09:32



TOTAL AREA • 953 m²

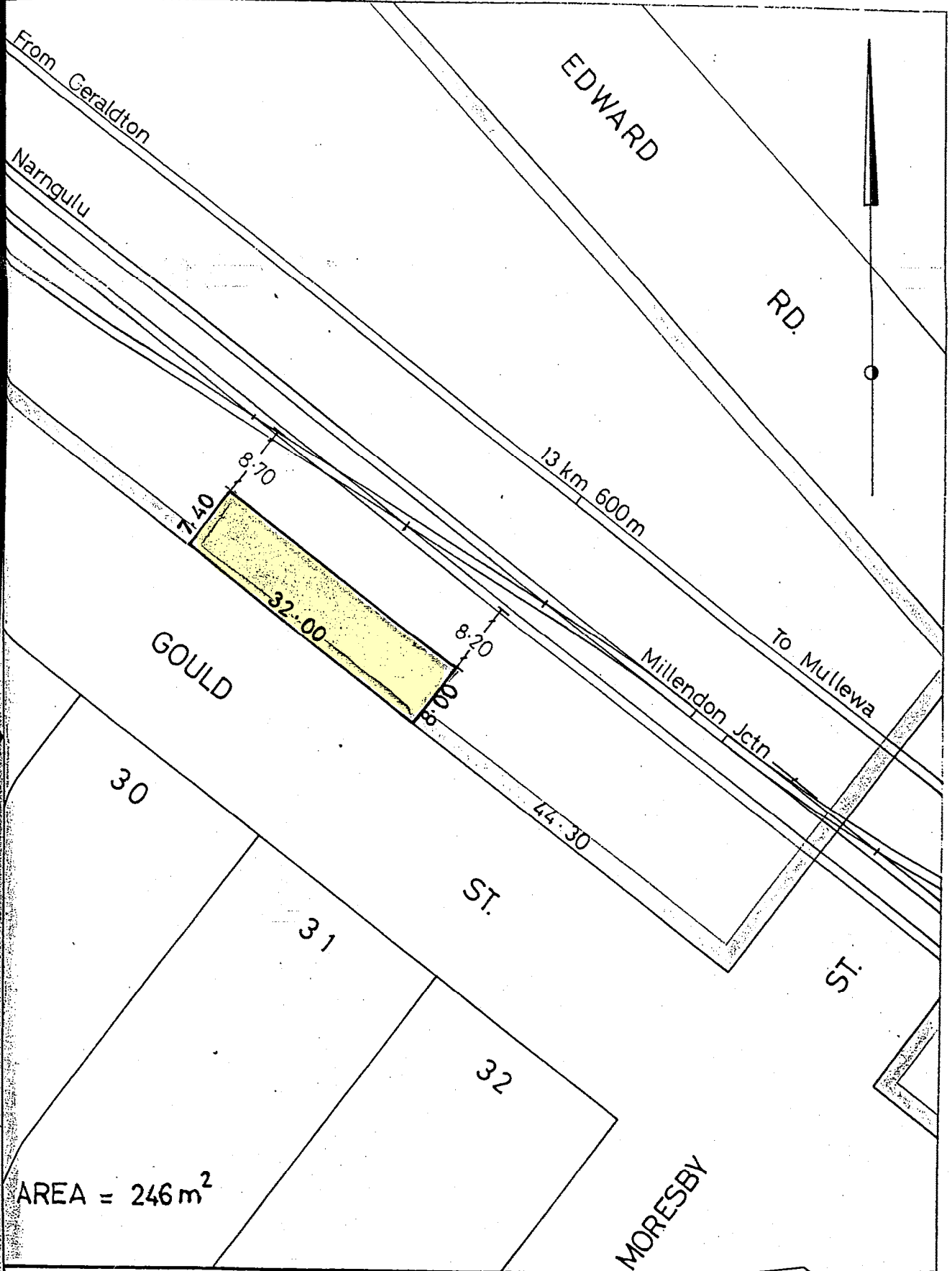
Civil Engineering Branch

Western Australian Government

Always Consultation

| | | | | |
|--|---------|---------|------|---------|
| Description WALKAWAY LEASE OF LAND TO GREENOUGH SHIRE | Drawn | W. | Date | AUG '91 |
| | File No | L 31 47 | Ref | 1:1200 |

L3147-Walkaway/Corridor - expired 31/07/2006



AREA = 246 m²

Western Australian Government Railways

| | | | |
|---------------------------------------|----------|----------|------------|
| NARNGULU | | R.F. | 1 : 600 |
| | | Date | 9 . 6 . 78 |
| LEASE OF LAND TO SHIRE OF GREENOUGH - | | Drawn | L.P.M. |
| | | Plan No. | 3365 |
| Property | Division | | |