

City of Greater Geraldton Self-Contained Recreational Vehicle (RV) Support Strategy



City of Greater Geraldton Council 2018

www.cgg.wa.gov.au

E council@cgg.wa.gov.au

T 08 9956 6600 F 08 9956 6674

63 Cathedral Avenue Geraldton WA 6530

Acknowledgements

Council wishes to thank all contributors and stakeholders involved in the development of this document.

Disclaimer

Information contained in this document is based on available information at the time of writing. All figures and diagrams are indicative only and should be referred to as such. While the City of Greater Geraldton Council has exercised reasonable care in preparing this document it does not warrant or represent that it is accurate or complete. Council or its officers accept no responsibility for any loss occasioned to any person acting or refraining from acting in reliance upon any material contained in this document.

City of Greater Geraldton Self-Contained Recreational Vehicle Support (RV) Strategy

Table of Contents

1. Self-contained recreational vehicle (RV)	4
1.1. Definition of a self-contained recreational vehicle (RV)	4
1.2. Background: The City of Greater Geraldton Travellers Support Policy	4
1.3. Support for self-contained RV's in the Travellers Support Policy	4
2. Facilities for self-contained RV's in the CGG	5
2.1. 24 Hour Free parking	5
2.2. Caravan Parks and Basic Parks in the CGG	6
2.3. Other parking facilities	6
2.4. Other Support	7
Attachment 1: Resources for RV Travellers	8
Attachment 2: Caravan Parks and Basic Parks	14

1. Self-contained recreational vehicle (RV)

1.1. Definition of a self-contained recreational vehicle (RV)

A self-contained motorised recreational vehicle (RV) provides internal sleeping accommodation, have internal kitchen and dining facilities including refrigerators and/or freezers, carry their own internal water supply and have internal shower and toilet facilities with a holding tank that requires access from time to time to a liquid water dump point.

1.2. Background: The City of Greater Geraldton Travellers Support Policy

The City of Greater Geraldton (CGG) Travellers Support Policy (CP 2.4: CCS310) was adopted by Council on 27 February 2018, with the objective to maximise economic activity from trade with travellers.

The rationale of this policy is to generate trade, support employment and inject revenue into the local economy through the provision by the City of the appropriate facilities and amenities, and the provision by the private sector of transport options, accommodation, hospitality, fuel, supplies and comprehensive commercial products and services.

According to the Policy, the CGG will support travellers journeying by road by:

- Liaison and coordination with the WA State Government Department of Transport/Main Roads in the planning and delivery of State highways and associated infrastructure and facilities (including location and development of passing lanes, rest areas, and location of fuel and service stations)
- Planning, development and maintenance of Local Government roads
- Planning, development and maintenance of Car Parking facilities
- Facilitating commercial accommodation and hospitality development in the City, to ensure accommodation and food options are available for travellers
- Facilitating the provision of commercial Caravan and Camping Parks offering self-contained or other cabin options, communal shared toilet, shower and laundry facilities, with powered/serviced and unpowered/non-serviced caravan, trailer, car-top or tent site options
- Provision of designated public camping sites
- Regular patrolling by Rangers of designated public camp sites to manage free overnight camping privileges
- Regular patrolling of all other public space areas to manage illegal camping and encourage legal camping at commercial or designated public camp sites

1.3. Support for self-contained RV's in the Travellers Support Policy

Section 5.3 of the Travellers Support Policy (TPC) outlines the following support for self-contained recreational vehicles:

- Facilitating the provision of commercial Caravan and Camping Parks
- Provision of designated public camping sites

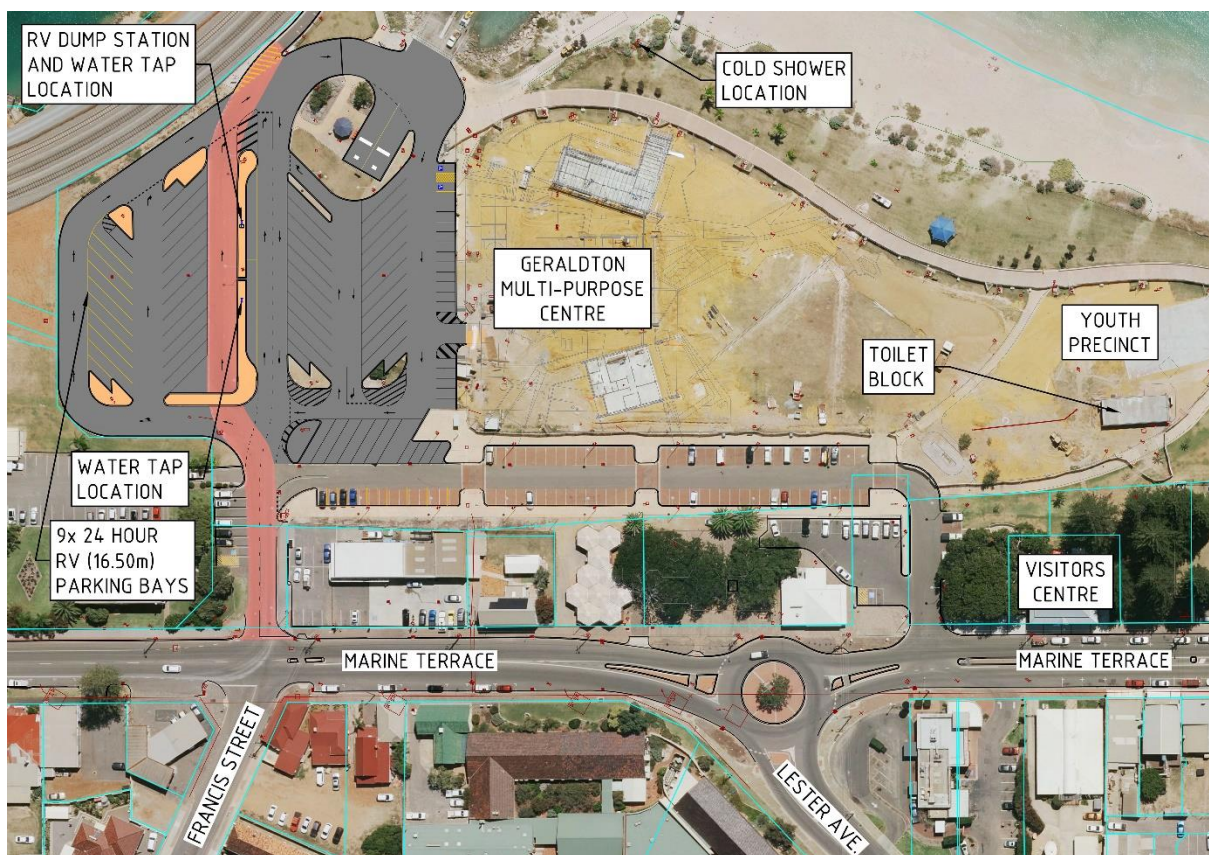
- Maintaining national certification as an “RV-Friendly” destination
- Provision of a limited number of RV-Only free overnight-only parking bays with nearby liquid waste dump point, near to the Geraldton City Centre

2. Facilities for self-contained RV’s in the CGG

2.1. 24 Hour Free parking

Nine, free 24 hour 16.50m parking bays for self-contained RV’s, with a free public dump point and potable water supply is available in the Francis Street Carpark. See Map 1. These facilities are not bookable, and are available on a first come, first served basis.

Map 1: Francis Street RV Parking Bays



The overnight facility is only available to self-contained RV’s, but there are ablution facilities available at the Youth Precinct. These facilities are locked up at 9.00 PM every night.

The overnight facility will be patrolled by the Rangers to manage free overnight camping privileges.

Other public areas will be patrolled to manage illegal camping and to encourage legal camping at commercial or designated public camp sites.

2.2. Caravan Parks and Basic Parks in the CGG

Self-contained RV's are also accommodated at Caravan Parks or Basic Parks in the CGG. This information is on the Visitor Centre website, and hard copies are available, which are updated annually. Details are included in Attachment 2.

Caravan Parks include:

- African Reef Caravan Park
- Batavia Coast Caravan Park
- Belair Gardens Caravan Park
- Drummond Cove Holiday Park
- Double Beach Holiday Park
- Mullewa Caravan Park

Basic Camps include:

- Oakabella Homestead
- Coronation Beach
- Ellendale Pool
- Fig Tree Crossing

2.3. Other parking facilities

Designated parking spaces for larger vehicles are available at the following locations.

2.3.1. *CGG Carpark No 5, opposite Stirlings Centre. See Map 2.*

Map 2: CGG Carpark No 5 designated RV parking



2.3.2. *The Sunset Beach Precinct Plan includes designated parking for oversized vehicles and caravans. See Map 3.*

Map 3: Sunset Beach Precinct Plan

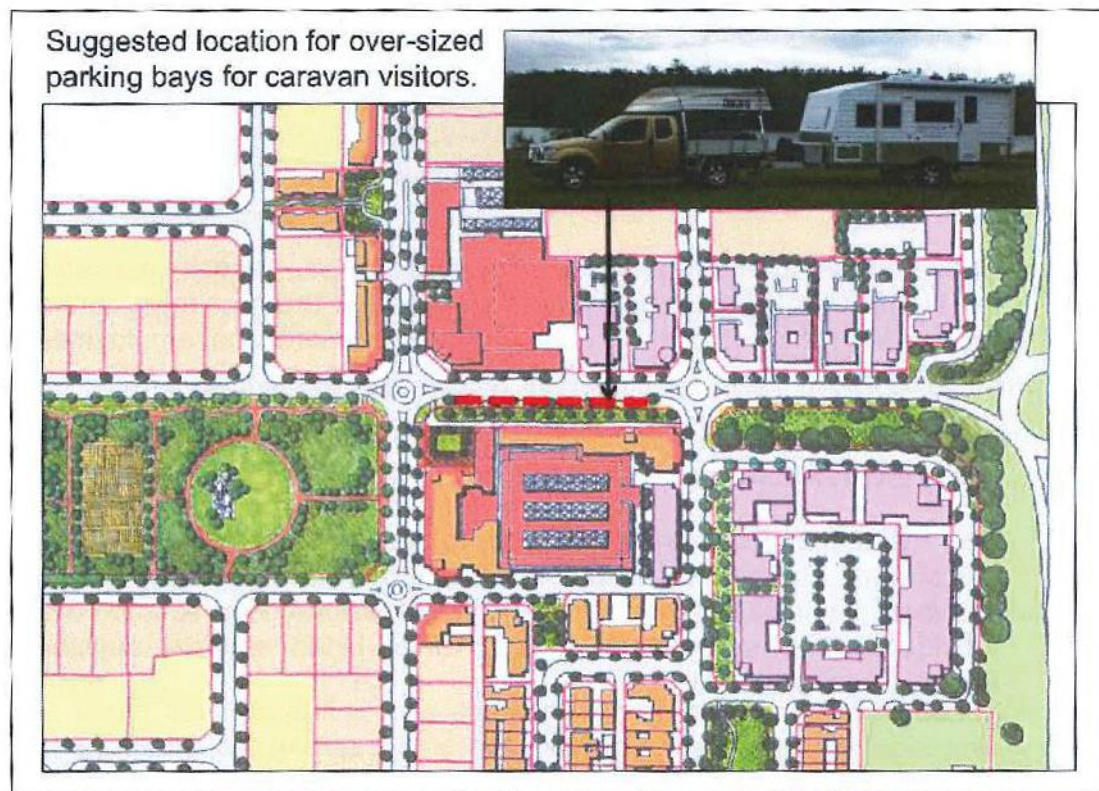


Figure 20: Visitor bays for caravans

2.4. Other Support

- A resource guide has been developed for RV travellers, which is included in Attachment 1: Resources for RV Travellers. This guide is available on the Visit Geraldton Website and copies will be distributed by the Rangers/VC staff to overnight RV campers.
- Geraldton will maintain its certification as an “RV-Friendly” destination.

Attachment 1: Resources for RV Travellers

MEDICAL FACILITIES AND SERVICES

- **HOSPITALS**
 - **Geraldton Regional Hospital (Public) (Emergency Room facilities)**
Shenton Street (off Cathedral Avenue)
Phone: 08 9956 2222 - www.health.wa.gov.au
 - **St. John of God Hospital (Private)**
Hermitage Street (off Cathedral Avenue)
Phone: 08 9965 8888 - www.sjog.org.au
- **MEDICAL CENTRES**
 - **Batavia Health**
361 Marine Terrace - Phone: 08 9965 8100 - www.bataviahealth.com.au
 - **Midwest Aero Medical**
368 Mt Magnet Road - Phone: 08 9956 8999
 - **Panaceum**
233 Lester Avenue - Phone: 08 9920 8111 - www.panaceum.com.au
 - **University Medical Practice**
Bill Sewell Complex, 192 Chapman Road – Phone: 08 9923 9999
- **DENTISTS**
 - **A 2 Z Dental**
91 Carsen Terrace - Phone: 08 9965 4437
 - **Cathedral Dental Clinic**
129 Cathedral Avenue - Phone: 08 9964 5488 - www.cathedraldental.com.au
 - **Chapman Rd Dental Clinic**
100 Chapman Road - Phone: 08 9964 3577
 - **Fitzgerald Dental Clinic**
139 Fitzgerald Street - Phone: 08 9921 4795 - www.fitzgeraldental.com.au
- **CHEMISTS**
 - **Amcal Pharmacy**
Stirlings Shopping Centre, 54 Sandford Street - Phone: 08 9921 6005
 - **Fountains Pharmacy (Chemmart)**
113 Marine Terrace - Phone: 08 9921 1755
 - **Northgate Plaza Pharmacy**
Northgate Shopping Centre, Chapman Road - Phone: 08 9921 6455

TOURISM SERVICES / INFORMATION

- **Geraldton Visitor Centre**
264 Marine Terrace, Geraldton, Western Australia, 6530 Phone: 08 9956 6670
Email: info@geraldtonvisitorcentre.com.au - www.geraldtonvisitorcentre.com.au
- **Central Greenough Historical Settlement Visitor Centre**
Brand Highway Greenough - Phone: 08 9926 1084
- **Mullewa Community Resource Centre**
Corner Maitland Street & Jose Street Mullewa - Phone: 08 9961 500
Email: Mullewa@crc.net.au - www.mullewatourism.com.au
- **City of Greater Geraldton**
63 Cathedral Avenue - Phone: 08 9956 6600 www.cgg.wa.gov.au

FOOD

- **SUPERMARKETS**
 - **IGAs**
 - Glenfield, 582 Chapman Road - Phone: 08 9938 1250
 - Queens IGA, 79 Durlacher Street - Phone: 08 9921 7044
 - Rigtors, 179 Durlacher Street - Phone: 08 9921 2307
 - Wonthella, 252 Fifth Street - Phone: 08 9921 4798
 - **Coles**
Northgate Centro Shopping Centre, Chapman Road - Phone: 08 9921 6598
 - **Woolworths**
Stirling's Shopping Centre, 54 Sandford Street - Phone: 08 9949 9200
Seacrest Shopping Centre, 75 Barret Drive, Wandina – Phone: 08 9960 8200
- **DELIS**
 - Bluff Point Shopping Centre, Chapman Road, Bluff Point - Phone: 08 9923 1078
 - Deloro, Chapman Road, Waggrakine - Phone: 08 9938 1030
 - Green Street, Spalding - Phone: 08 9923 2711
- **BUTCHERS**
 - Gearing Butchers, Shop 8, Tarcoola Shopping Centre - Phone: 08 9921 4656
 - Mick Davey Butchers, 165 Marine Terrace - Phone: 08 9921 2076
 - The Whole Hog, Northgate Centro Shopping Centre - Phone: 08 9921 5161
 - Yeeda Meats, Stirling Shopping Centre - Phone: 0409 876 367
- **LOCAL FISH AND CRAYFISH**
 - Seafood Department of Queens IGA, 79 Durlacher Street - Phone: 08 9964 7044
 - Latitude Fisheries, 57 Connell Road, Fishermans Wharf - Phone: 08 9964 3470
- **FRESH PRODUCE**
 - Geraldton Fruit and Vegetable Supply, 54 Gregory Street - Phone: 08 9921 2940
 - Saturday Farmers Market, Maitland Park, Cathedral Avenue - 8.00am to Noon
 - Sunday Market, Old Railway Station, Chapman Road - 8.00am to Noon

AUTOMOTIVE & CARAVAN SERVICES

- **MECHANICS**
 - Axis Autos Service Centre, 284 Marine Terrace - Phone: 08 9921 2411
 - Cams Auto Repairs, 3 Gray Street - Phone: 08 9964 4286
 - Geraldton Ultratune, Unit 2/179 Northwest Coastal Highway - Phone: 08 9921 1899
 - Graeme Hosken Autos, 25 Bradford Street - Phone: 08 9921 5232
 - O'Brien 4WD Centre, 6 Boyd Street - Phone: 08 9964 1068
 - Southside Mechanical Services, 120 Northwest Coastal Highway - Phone: 9921 1162
 - Wayne Poletti Automotive Centre, 14 Anzac Terrace - Phone: 08 9921 1729
- **AUTO ELECTRICIANS**
 - Craig's Auto Electrical, 10 Larkin Street - Phone: 08 9921 4723
 - Geraldton Auto Electrical, 22 Boyd Street - Phone: 08 9921 4322
 - Pages Auto Electrical Services, 379 Marine Terrace - Phone: 08 9921 2956
 - R & M Auto Electrical, 211 Shenton Street - Phone: 08 9921 7002
- **AIR CONDITIONING** See Auto Electricians
- **TYRES**
 - Beaufort's, 141 Flores Road, Webberton - Phone: 08 9921 5466
 - Bridgestone, Northwest Coastal Highway - Phone: 08 9921 5589
 - Tyrepower, Corner Chapman Road & Forrest Street - Phone: 08 9921 4144
- **CAR DEALERS**
 - Geraldton Toyota, 339 Marine Terrace - Phone: 08 9964 1000
 - Kia Geraldton, 26 Webberton Street - Phone: 08 9921 8611
 - Midwest Auto, 5 Phelps Street - Phone: 08 9938 0505
 - Young Motors, Corner Cathedral Avenue & Lester Avenue - Phone: 08 9964 1157
 - Young Motors, Northwest Coastal Highway - Phone: 08 9949 9770
- **CARAVAN REPAIRERS**
 - Batavia Coast Caravan Land, 215 Flores Road - Phone: 08 9923 1601
 - Country Time Caravans, 152 Flores Road - Phone: 08 99 644 224
- **SOLAR PANELS, GENERATORS, INVERTERS, BATTERIES & CHARGERS (Sales & Repairs)**
 - Battery Mart, 100 Flores Road - Phone: 08 9964 8404
 - Sun City Solar, 140 Flores Road, Webberton - Phone: 08 9965 4089
 - Country Time Caravans, 152 Flores Road - Phone: 08 9964 4224 (generators)
 - Geraldton Mower & Repairs, 130 Flores Road - Phone: 08 9964 4036 (generators)
 - Getaway Outdoors, Homemakers Centre
208 Northwest Coastal Highway - Phone: 08 9965 3766 (generators)

SERVICES

- **MOBILE PHONES**
 - Telstra Shop, Northgate Shopping Centre, 110 Chapman Road, Geraldton - Phone: 08 9965 5770
- **FREE INTERNET & WIFI**
 - CBD Foreshore area with CGG Hotspot locations - Free Wi-Fi
 - Geraldton Regional Library - Free Wi-Fi
- **POST OFFICE**
 - Main PO 50 Durlacher Street, open Monday to Friday 9am-5pm - Phone: 13 13 18
- **LAUNDROMATS**
 - Corner Fitzgerald Street & Marine Terrace
- **POTABLE WATER**
 - Water available at the Geraldton Visitor Centre - free
- **RUBBISH DISPOSAL**
 - Meru Landfill, Landfill Road, Narngulu – Phone: 08 9923 3188
- **DUMP POINTS**
 - Batavia Coast Caravan Park, Hall Road (small charge)
 - Belair Gardens Caravan Park, Marine Terrace (small charge)
 - Drummond Cove Holiday Park, Northwest Coastal Hwy (small charge)
 - Coronation Beach (free) 35km north
 - Ellendale Pool (free) 45km south-east
 - Fig Tree Crossing (free) 18km north-east
 - Francis Street Dump Point (free). Next to the Esplanade and Geraldton Multipurpose Centre
- **TOILETS**
 - Corner Foreshore Drive and Forrest Street, Town Beach (Cubes)
 - Glendinning Park off Glendinning Road
 - Kempton Street, St George’s Beach
 - Marina at Webbe Hayes Lane
 - Pages Beach off Marine Terrace
 - Rest Centre, Foreshore Drive
 - Tarcoola Beach off Wilcock Drive
 - Whitehall Road, Drummond Cove
 - Bluff Point Shopping Centre, Chapman Road, Bluff Point

SUPPLIES

- **WATER FILTERS**
 - Bunnings, Northwest Coastal Highway - Phone: 08 9965 9600
 - Batavia Coast Caravan Land, 215 Flores Road - Phone: 08 9923 1601
 - Country Time Caravans, 152 Flores Road - Phone: 08 9964 4224
- **CAMPING GEAR**
 - BCF, 175 Northwest Coastal Highway - Phone: 08 9921 3144
 - Getaway Outdoors
Homemakers Centre, Northwest Coastal Highway - Phone: 08 9965 3766
- **HARDWARE**
 - Ag Services, 155 Flores Road - Phone: 08 9965 7909
 - Bunnings, Northwest Coastal Highway - Phone: 08 9965 9600
- **OP SHOPS**
 - St Vincent De Paul, 114 Durlacher Street - Phone: 08 9921 7617
 - Salvation Army, Northwest Coastal Highway (next to Shell) - Phone: 08 9964 3667
 - Red Cross, 202 Lester Avenue - Phone: 08 9921 5181
 - Good Samaritans, 171 Northwest Coastal Highway - Phone: 08 9921 6961

FISHING

- **WHERE TO FISH**
 - Drummond Cove
 - Marina Wharf
 - Point Moore
- **FISHING TACKLE & BAIT**
 - BCF, 175 Northwest Coastal Highway - Phone: 08 9921 3144
 - Getaway Outdoors
Homemakers Centre, Northwest Coastal Highway - Phone: 08 9965 3766
 - Geraldton Sports Centre, 204-205 Marine Terrace - Phone: 08 9921 3664
 - 440 Roadhouse, North West Coastal Highway - Phone: 08 9938 1334

PETS

- **PET MINDING SERVICES**
 - Catopia, 23 Ridley Road - Phone: 0448 553 443 / 08 9965 3443
 - Paws 4 Thought, 45 Hall Road - Phone: 0407 088 612
 - Petite Paws, 34449 Brand Highway - Phone: 0419 928 455
 - Arthur Road Kennels, 218 Arthur Road, Walkaway - Phone: 08 9926 15
- **PET SUPPLIES**
 - City Farmers, Shop 18, Homemakers Centre
Northwest Coastal Highway - Phone: 08 9921 2648
 - Place Road Pets, 233 Place Road - Phone: 08 9921 2979

RADIO/TV

○ RADIO STATIONS

- Tourist Radio (88.0FM) - (Information for travellers)
- 6 TTT (97.3FM) - (Community Access Radio Station)
- ABC Midwest & Wheat belt (6GN 828 AM) - Part of the ABC Local Radio Network
- ABC Radio National 6ABCRN (99.7 FM) - Speciality talk and music
- Triple J 6JJJ (98.9 FM) - Music (non-commercial, ABC affiliate)
- ABC News Radio - 6PNN (101.3 FM) – Rolling News bulletins, news magazine programs and LIVE coverage from Federal Parliament House of Representatives
- ABC Classic FM 6ABCFM (94.9 FM) - Classical and Jazz Music
- WAFM (96.5FM) - Top 40 Music
- The Spirit Network Radio 6BAY (FM 98.1 \ 1512 AM) - Classic Hits / Adult Contemporary Music
- Radio Mama (100.5FM) Indigenous Community station

○ TV STATIONS:

- Australian Broadcasting Corporation (ABC) - ABC1, ABC2, ABC3, ABC News 24 (digital channels)
- Special Broadcasting Service (SBS) - SBS One, SBS Two, SBS HD (digital channels)
- WIN Television, a dual affiliate of both the Nine Network and Network Ten
- GWN7 (Golden West Network), an affiliate of the Seven Network

WORK

- Seasonal harvest work very limited - check with Geraldton Visitor Centre
- Grey Nomads Jobs www.greynomadsjobs.com.au/jobs

Attachment 2: Caravan Parks and Basic Parks

CARAVAN PARKS			
Caravan Park	Address	Contact Details	General
African Reef Caravan Park	5 Broadhead Avenue Tarcoola Beach	(08) 9964 5566	Pets \$5 per stay. Can only accommodate up to 22ft in length. Shower and laundry (coin operated), for non-stayers it's \$5 per shower. No dump point. No camp kitchen, but restaurant on site and BBQ's within pool area. Rates are based on two people, \$5 per extra person per night.
Batavia Coast Caravan Park	239 Hall Road, Waggrakine	(08) 9938 1222	Pets welcome on lead and owners must clean up after their pets, leash free area at back of park. Shower is \$5 per shower for non-stayers and laundry is coin operated. Dump point free for park users, or \$5 charge for non-stayers. Shady trees, peaceful and off the highway. Camp kitchen, swimming pool and wireless internet. All rates based on two people. Charges for single traveller is \$29 per night. Please note that checking out on a Sunday incurs a \$20 surcharge, checking out on a Public Holiday incurs a \$25 surcharge
Belair Gardens Caravan Park (Top Tourist)	463 Marine Terrace, Beachlands	(08) 9921 1997	Dump point not available to non-stayers. Shower \$5 charge to non-stayers, laundry not available to non-stayers. Swimming pool, free Wi-Fi, bouncy pillow and camp kitchen. Across from Pages Beach and the Fisherman's Wharf. All rates are based on two people. Pets are accepted with a \$20 refundable pet bond (only applicable to powered and unpowered sites, not chalets). Please note seasonal rates may apply.
Drummond Cove Holiday Park	1633 North West Coastal Highway, Chapman Valley	(08) 9938 2524	Pets are welcome on lead and owners must clean up after their pets. Dump point free to all park users, \$5 fee for non-stayers. Shower free for park users or \$5 fee for non-stayers, laundry coin operated. Ocean views, aviary, pet kangaroos, swimming pool, playground and internet cafe. BBQ facilities free for all park stayers or \$5 for non-stayers. All rates based on two people.
Sunset Beach Holiday Park	4 Bosley Street Sunset Beach	(08) 9938 1655	Pet friendly at the Managers discretion, owners must abide by park rules (provided upon arrival). Dump point free to park users. Shower and laundry facilities, \$5 per shower for non-stayers, laundry coin operated. Right on the beach, two camp kitchens, bouncy

			pillow, games room, internet access, swimming pool, close to Glenfield IGA Supermarket, CBD 5.5km away. Rates based on two people.
Double Beach Holiday Park	4 Hull Road, Cape Burney	(08) 9921 5845	Dump point free for park users only. Pets welcome on lead and owners must clean up after their pets. Shower and laundry facilities for park users, \$5 per non stayer. Close to beach and river, shady trees and peaceful setting. Close to Greenough Pioneer Museum, Central Greenough Historic Settlement and all Greenough attractions. All rates based on two people.
Mullewa Caravan Park	Lovers Lane, Mullewa	(08) 9961 1161	Bookings can be made online at www.visitgeraldton.com.au or with On-Site Caretakers – during months of August, September & October, or at Mullewa District Office between 8:30am-4:30pm, Monday to Friday. Dump point, dogs welcome on lead, showers and laundry facilities. Showers and laundry use for non-stayers is \$5 per person. Great base for the wildflower season (ranging from June to August yearly), five walking trails in town and the Monsignor Hawes' Lady of Mt Carmel Church.

BASIC PARKS			
Basic Park	Address	Contact Details	General
Oakabella Homestead	Left of Hatch Road, 35Km North of Geraldton	(08) 9925 1033	\$9 per person per night, kids 5 and over \$2. Limited power, no dump point. Clean and hot showers. Pets welcome on lead and clean up after them. Licensed tearooms and Homestead tours available.
Coronation Beach	34km North of Geraldton, off North West Coastal HWY.	Caretaker on site	\$8 per person per night, \$7 for pensioners. Under 16 stay free. Dump point, dogs permitted on lead, dry toilets, gas BBQ, no electricity or water. Great for windsurfing and fishing right on the beach.
Ellendale Pool	45km on Walkaway Road.	Honesty Box	\$5 per person per night. Dump point, dogs permitted on lead, dry toilets, gas BBQ, no electricity or water. Great for bird watching, walking and kayaking.
Fig Tree Crossing	17.5km East on Chapman Valley Road.	Honesty Box	\$8 per person per night, \$7 for pensioners. Under 16 stay free. Dump point, dry toilets, gas BBQ, dogs permitted on lead, no electricity or water. One night stays only.