
Site Context Report

Point Moore – Beach Closure to Vehicles

Mike Dufour



Document Control

Version	Date	Author	Date	Reviewer	Release
v1.00	7 Feb 2018	M. Dufour	7 Feb 2018	M. O'Grady	Y
v2.00	9 Feb 2018	M. Dufour	9 Feb 2018	C. Lee	Y

1. Introduction

A list of signatures has been received requesting the closure of a section of beach at Point Moore. This document provides information to support a Council Agenda item.

Site Plan - Proposed Closure

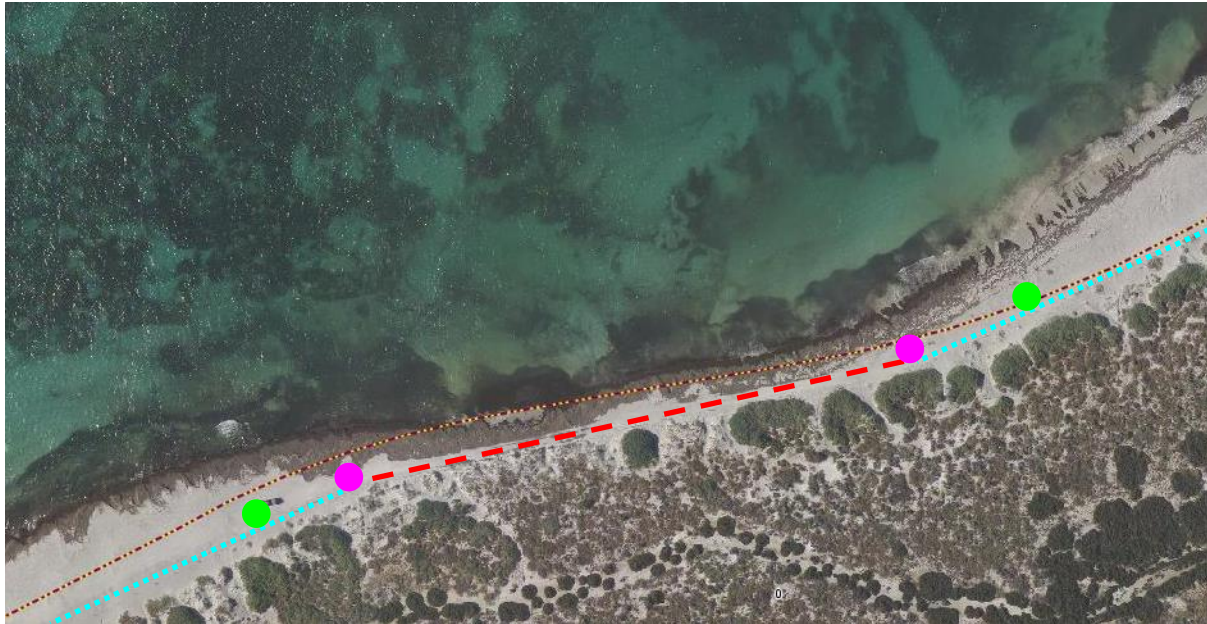


Figure 1. Beach closure (to vehicles) site plan.

Legend	Item	Description
	Beach	Section of beach to be closed to vehicle access Approximately 150m
	Fence	Repair/Renew fence back to beach access tracks Approximately 300m
	Sign	Install sign “Turn around now. No through access” or similar
	Sign	Install sign “No vehicles past this point” or similar (see Figure 9)

Supporting Information



Figure 2. Point Moore settlement (Intramaps, 2016).



Figure 3. Pages Beach to Explosives – closure area outlined. (Intramaps, 2016).



Figure 4. Beach Area identified for closure to vehicles (Intramaps, 2016).



Figure 5. Submerged car in beach area identified for closure (Ranger Services team, 2017).



Figure 6. Photo looking east along beach (Coastal and Natural Environment team, 2018).



Figure 7. Photo looking west along beach (Coastal and Natural Environment team, 2018).

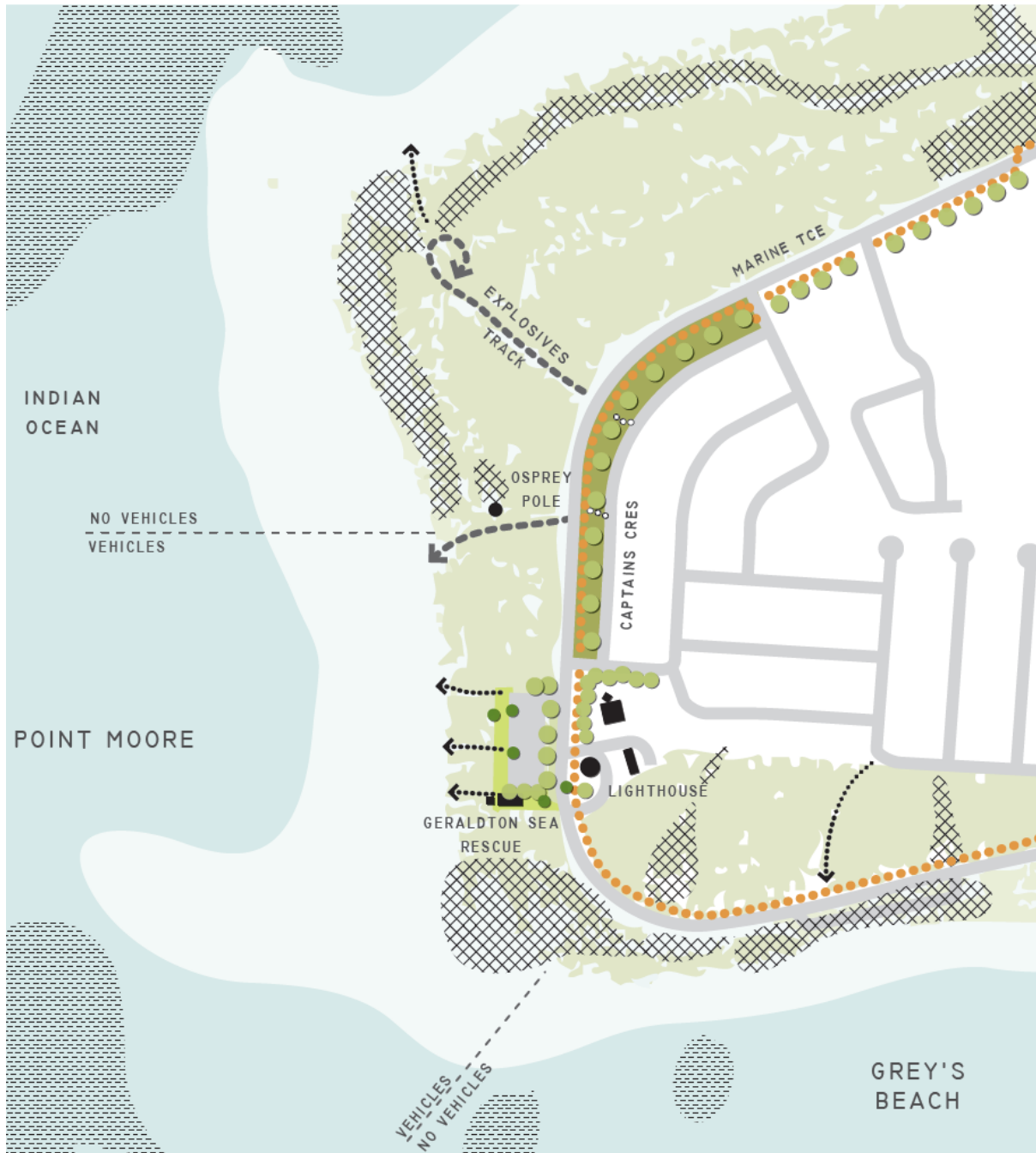


Figure 8. Point Moore to Tarcoola Beach Foreshore Master Plan: Point Moore vehicle access (Ecoscape, 2010).



Figure 9. Example closure to vehicles signage (Sign Production team , 2018).