



Review of Wards and Representation



Submissions can be made by no later than 13 July 2018 at 4pm

Contents

Background	2
Review process	3
Factors to be considered	4
What do these factors mean?	4
What does this mean for the City of Greater Geraldton?	5
Options to consider	7
Option 1 - 6 wards, 12 Councillors, 2 Councillors per ward	8
Option 2 - 4 Wards, 8 Councillors, 2 Councillors per ward	9
Option 3 - 4 Wards, 12 Councillors, 3 Councillors per ward	10
Option 4 - 5 Wards, 14 Councillors, variable number of Councillors per ward .	11
Option 5 – No wards	12
Option 6 - Mullewa ward (1 Councillor), North/Hills Ward (3 Councillors), 4 other wards with 2 Councillors each	13
Other Options	13
Transitional arrangements	14
How to make a Submission	15
Appendix	16
Localities and Suburbs of the City of Greater Geraldton	17
Option 1 – 6 wards, 12 Councillors, 2 Councillors per ward	17
Option 2 – 4 Wards, 8 Councillors, 2 Councillors per ward	20
Option 3 – 4 Wards, 12 Councillors, 3 Councillors per ward	23
Option 4 - 5 Wards, 14 Councillors, variable number of Councillors per ward .	26
Option 5 – No wards	28
Option 6 - Mullewa ward (1 Councillor), North/Hills Ward (3 Councillors), 4 other wards with 2 Councillors each	29

Background

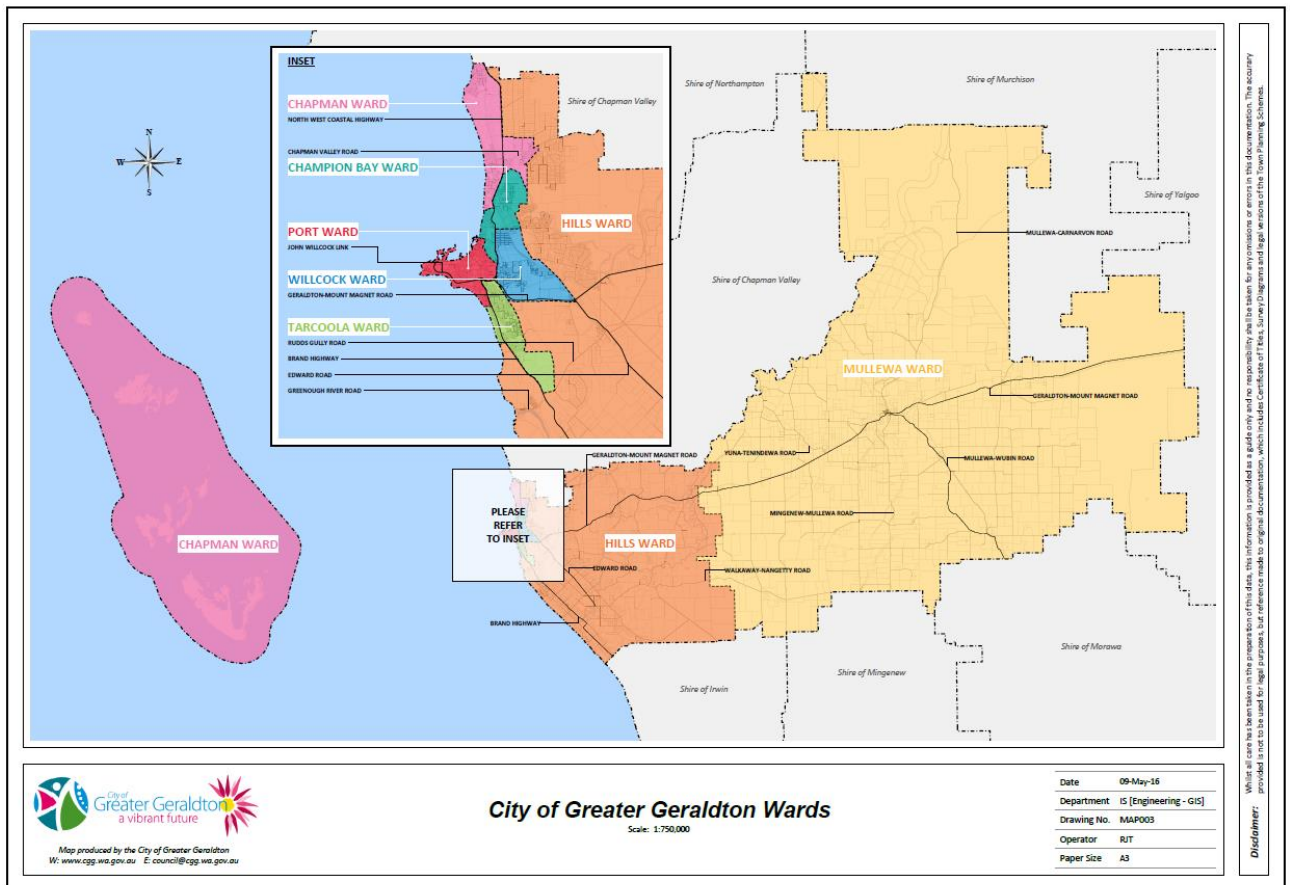
The City of Greater Geraldton is undertaking a review of its ward system and representation.

Under the *Local Government Act 1995* (the Act), local governments with wards must carry out reviews of the ward boundaries and the number of Councillors for each ward at least once every eight years.

Wards and representation were last reviewed when the then City of Geraldton-Greenough merged with the Shire of Mullewa in 2010.

The Council of the City of Greater Geraldton is presently comprised of 14 Councillors elected from 7 wards with two Councillors each, plus a Mayor elected at large.

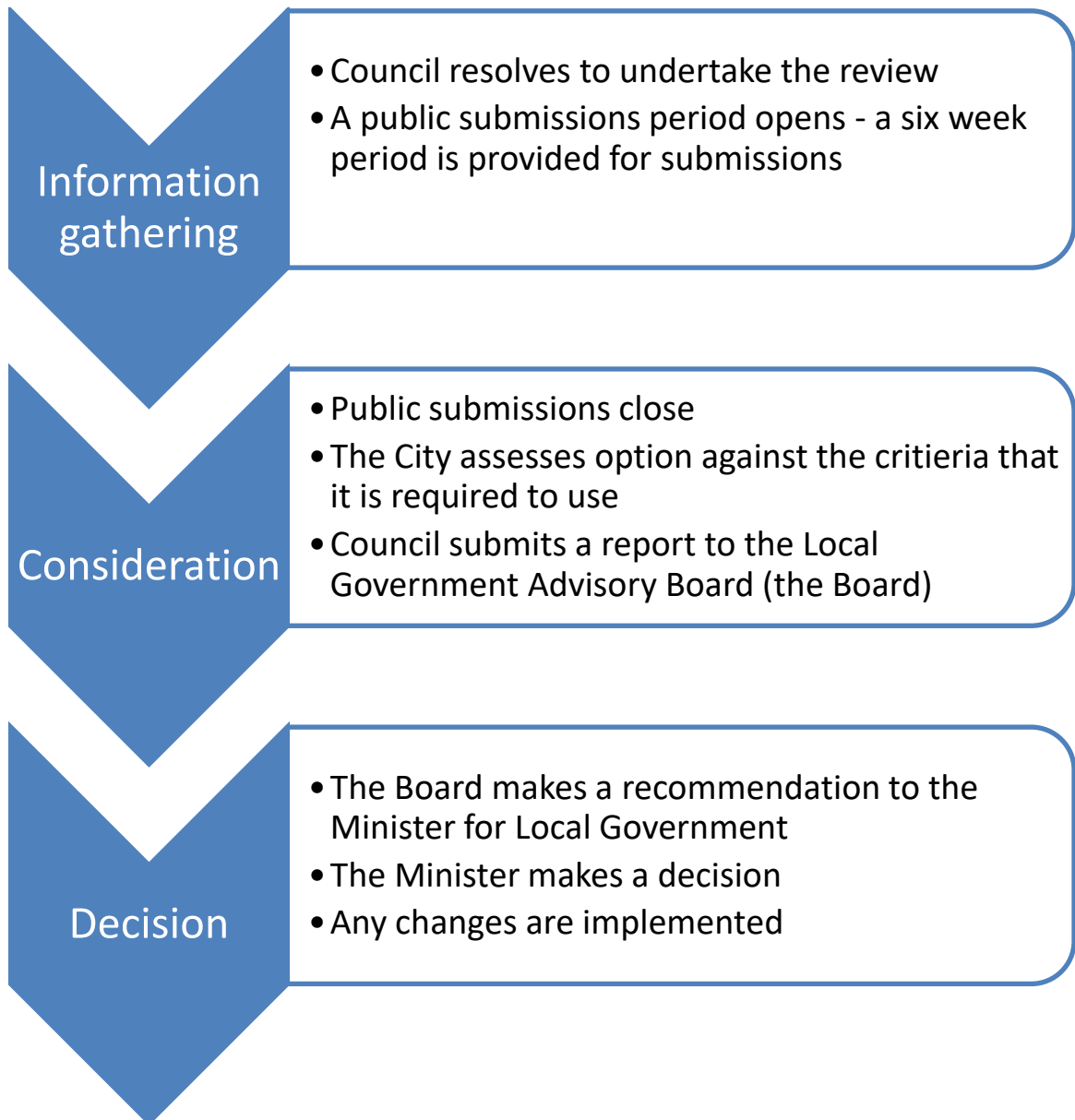
The present wards are shown below:



Review process

The review process must be carried out in accordance with the provisions of the Local Government Act 1995.

It involves a number of steps:



Council elections are scheduled to be held in October 2019. In order to ensure any required changes are made, the City will need to make a submission to the Board by 31 March 2019.

Factors to be considered

The purpose of the review is to assess the arrangements in place for the ward boundaries and representation that is most appropriate and best suits the characteristics of the City of Greater Geraldton and its residents.

As a result of the Review, the City may propose any of the following:

- Creating new wards;
- Changing ward boundaries;
- Abolishing any or all wards;
- Changing the name of a district or a ward;
- Changing the number of Councillors; and/or
- Specifying or changing the number of offices of Councillor for a ward.
- Section 2.17 of the Local Government Act 1995 provides that where its Mayor is elected at large, a local government must have a minimum of six and no more than 15 (including the Mayor and up to 14 Councillors) elected members.

The City currently has 14 Councillors and a Mayor elected at large, the allowable maximum number of elected members.

When considering changes to wards and representation, Schedule 2.2 of the Act specifies the factors that must be taken into account by a local government as part of the review process:

- Community of interest;
- Physical and topographic features;
- Demographic trends;
- Economic factors; and
- Ratio of Councillors to electors in the various wards.

What do these factors mean?

The Local Government Advisory Board (LGAB) receives and reviews requests by local governments and makes recommendations to the Minister, who may accept or reject the Board's recommendation.

More detail about the LGAB, its roles and processes is available at <https://www.dlqc.wa.gov.au/AboutUs/Pages/LGAB.aspx> .

The criteria in the Act can be interpreted as:

Community of interest	Physical and topographic features	Demographic trends	Economic factors	Ratio of Councillors to electors
<p>The term community of interest has a number of elements. These include a sense of community identity and belonging, similarities in the characteristics of the residents of a community and similarities in the economic activities. It can also include dependence on the shared facilities in an area as reflected in catchment areas of local schools and sporting teams, or the circulation areas of local newspapers. Neighbourhoods, suburbs and towns are important units in the physical, historical and social infrastructure and often generate a feeling of community and belonging.</p>	<p>These may be natural or man-made features that will vary from area to area. Water features such as rivers and catchment boundaries may be relevant considerations. Coastal plain and foothills regions, parks and reserves may be relevant as may other man made features such as railway lines and freeways.</p>	<p>Several measurements of the characteristics of human populations, such as population size, and its distribution by age, sex, occupation and location provide important demographic information. Current and projected population characteristics will be relevant as well as similarities and differences between areas within the local government.</p>	<p>Economic factors can be broadly interpreted to include any factor that reflects the character of economic activities and resources in the area. This may include the industries that occur in a local government area (or the release of land for these) and the distribution of community assets and infrastructure such as road networks.</p>	<p>The Board considers that the ratio of Councillors to electors is particularly significant - it is expected that each local government will have similar ratios of electors to Councillors across its wards. The Board will not support deviations of more than plus or minus 10% of the average ratio of electors to Councillors between wards.</p>

What does this mean for the City of Greater Geraldton?

Communities of interest are generally reflected in terms of three broad groupings:

- Urban (Chapman, Champion Bay, Port, Tarcoola, and Willcock wards);
- Hills/hinterland (Hills ward); and
- Rural (Mullewa ward).

Physical and topographical features also tend to be reflected in the Mullewa and Hills wards to a degree. In urban areas physical and topographic features are less prominent. A number of localities are split between wards:

- Geraldton (3,148 electors) - between Champion Bay and Port wards;
- Mahomets Flats (828 electors) – between Port and Tarcoola wards;
- Tarcoola Beach (1,288 electors) – between Port and Tarcoola wards; and
- Wonthella (1,613 electors) – between Willcock, Champion Bay, and Hills Wards.

In terms of demographic trends, population growth is expected in Chapman, Champion Bay, Hills to the immediate east of the existing urban area, Port, Tarcoola, and Willcock wards. Little or no growth relative to other areas is expected in Mullewa ward.

Current boundaries tend to reflect economic factors, although there is considerably less distinction between the wards in urban areas.

The ratio of Councillors to electors in the various wards should be as even as possible, with a rule of thumb being that deviations should not be more than plus or minus 10% of the average ratio of electors to Councillors between wards.

There are significant deviations between wards at present. The ratio of electors to Councillors using WA Electoral Commission statistics as at the October 2017 City of Greater Geraldton elections are:

Ward	Councillors	Electors	Ratio of electors per Councillor	% ratio deviation
Champion Bay	2	3,246	1,623	14.46%
Chapman	2	4,599	2,300	-21.19%
Hills	2	5,137	2,569	-35.37%
Mullewa	2	394	197	89.62%
Port	2	3,989	1,995	-5.12%
Tarcoola	2	5,553	2,777	-46.33%
Willcock	2	3,646	1,823	3.92%
Total or average	14	26,564	1,897	

Of note is that:

- Mullewa and Champion Bay wards are over represented;
- In particular Mullewa ward deviates significantly from the average – an electors vote from this ward is worth almost 9 times the value of the average of the rest;
- Chapman, Hills and Tarcoola wards are significantly under represented; and
- Port and Willcock wards are close to the average.

Options to consider

The City does not have an established position on this topic, and the following points are provided to aid discussion only.

There are a wide number of options that could be considered. Changes could include:

- Creating new wards;
- Combining wards;
- Changing the boundaries of a ward;
- Having no wards;
- Changing the name of a district or a ward;
- Changing the number of Councillors; and/or
- Specifying or changing the number of Councillors for a ward.

It is possible to have anywhere between no wards and up to 14 wards of one member each. The range of wards and required number of electors to achieve an even number of electors in each is:

Wards	Electors per ward	Wards	Electors per ward
0	26,564	8	3,321
2	13,282	9	2,952
3	8,855	10	2,656
4	6,641	11	2,415
5	5,313	12	2,214
6	4,427	13	2,043
7	3,795	14	1,897

A number of localities within the urban area of the City are split between wards. Overall, it may assist to group 'whole' localities (suburbs) within wards.

In terms of particular outcome for the City, there are three broad categories:

1. Vary ward boundaries to achieve a more even ratio of electors per Councillor;
2. Change the number of wards and/or Councillors to simplify representation and also achieve a more even ratio of electors per Councillor; or
3. Dispense with wards altogether.

When comparing or devising options, note that:

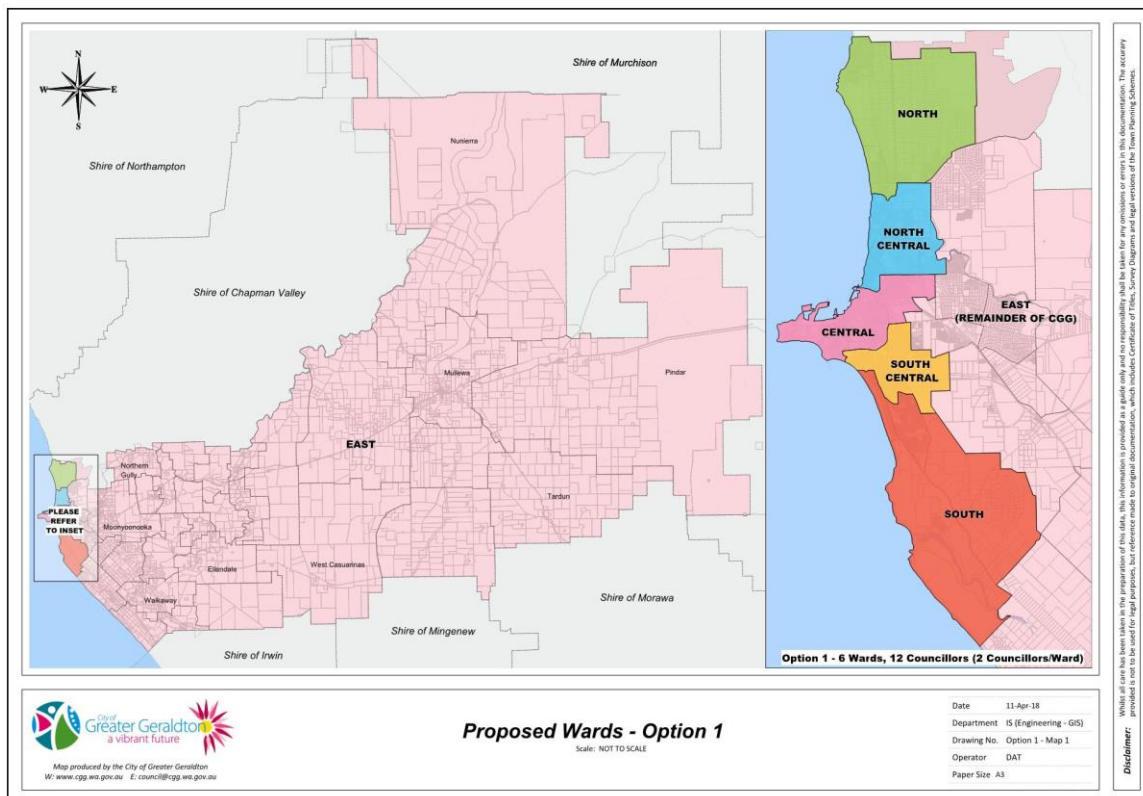
1. Unless otherwise stated, when considering potential boundaries, locality (i.e. suburb) boundaries are used;
2. Each option seeks to get as close as possible to the required tolerance of plus or minus 10% of the average number of electors per Councillor within the option parameters; and
3. The proportion of the population who are electors (that is, over 18 and enrolled to vote) has been estimated using the overall percentage of the City as a whole (i.e. 69%).

Option 1 - 6 wards, 12 Councillors, 2 Councillors per ward

Under this option, the average ratio of electors per Councillor is 2,214. The ratio of Councillor to electors by ward is:

Ward	Councillors	Ratio	% ratio deviation
North	2	2,171	-1.93%
North central	2	2,192	-0.96%
Central	2	2,320	4.82%
South central	2	2,097	-5.29%
South	2	2,127	-3.92%
East	2	2,375	7.291%

A list of localities included in each Ward is detailed in the Appendix.

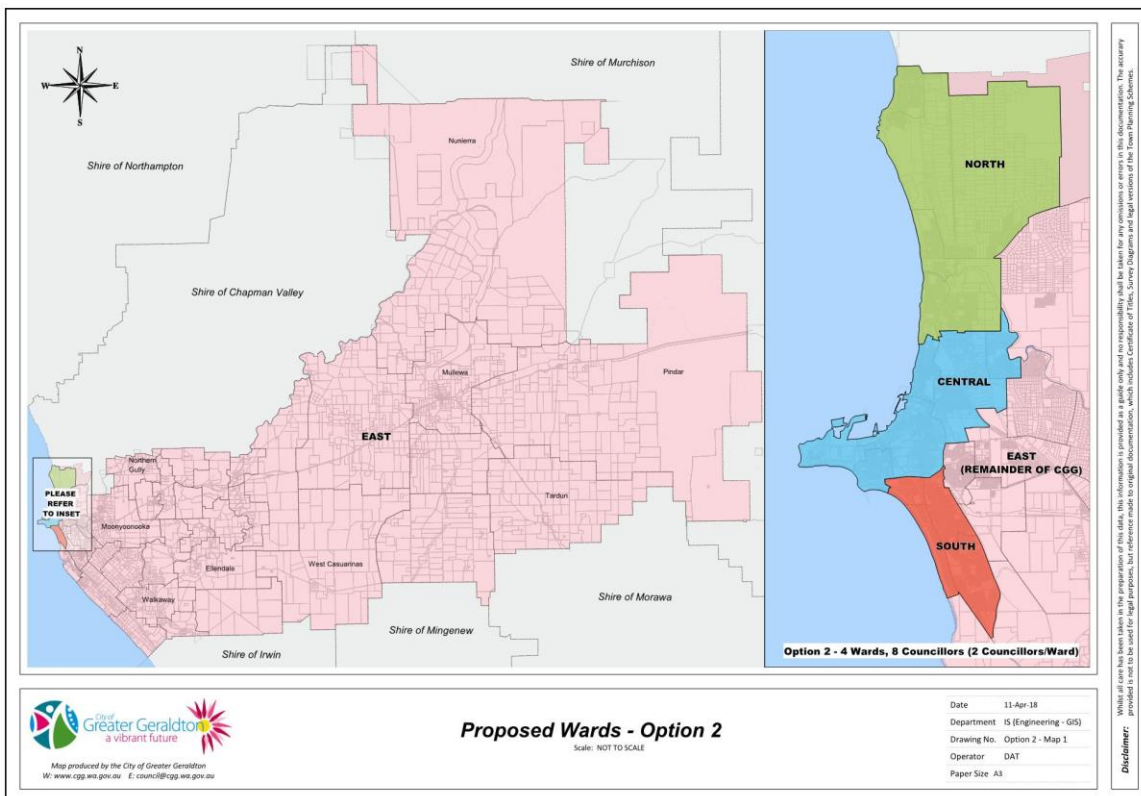


Option 2 - 4 Wards, 8 Councillors, 2 Councillors per ward

The average ratio of electors per Councillor is 3,321. The ratio of Councillor to electors in each ward is:

Ward	Councillors	Ratio	% ratio deviation
North	2	3,357	1.10%
Central	2	3,326	0.18%
South	2	3,286	-1.04%
East	2	3,313	-0.24%

A list of localities included in each Ward is detailed in the Appendix.



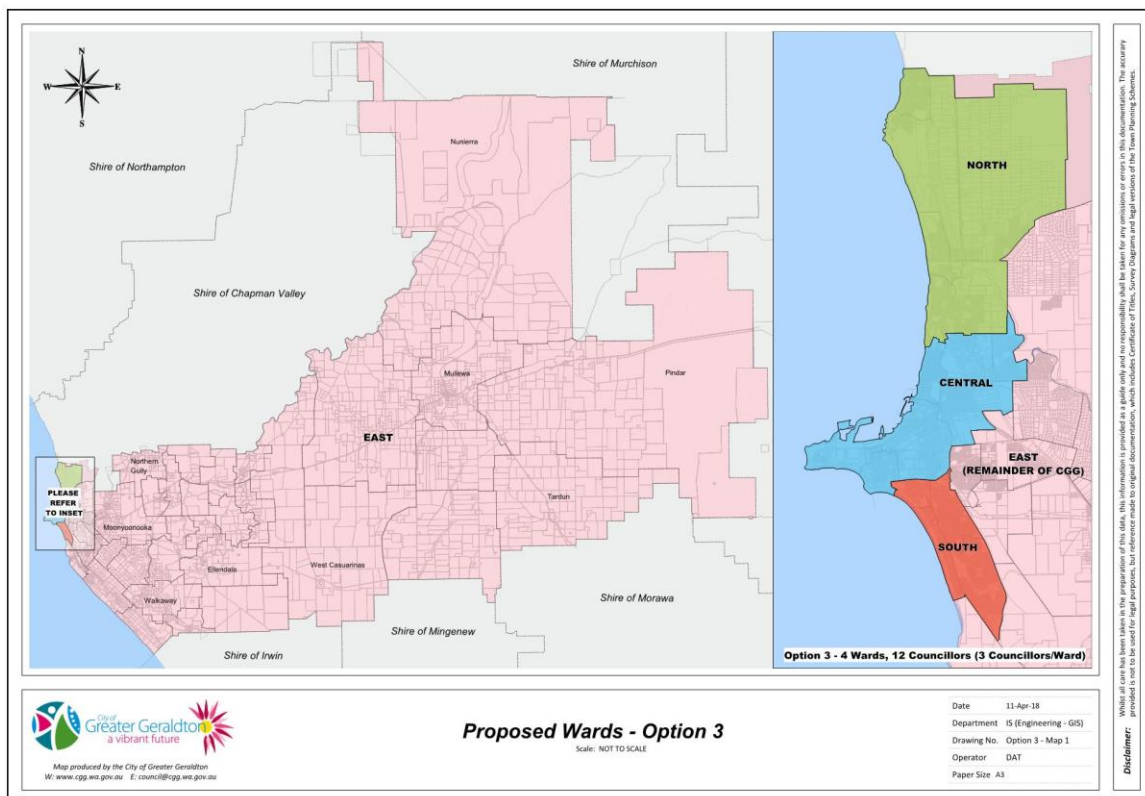
Option 3 - 4 Wards, 12 Councillors, 3 Councillors per ward

Possible ward boundaries under this option are the same as Option 2, the number of Councillors differs.

The average ratio of electors per Councillor is 2,214. The ratio of Councillor to electors in each ward is:

Ward	Councillors	Ratio	% ratio deviation
North	3	2,238	1.10%
Central	3	2,218	0.18%
South	3	2,191	-1.04%
East	3	2,208	-0.24%

A list of localities included in each Ward is detailed in the Appendix.



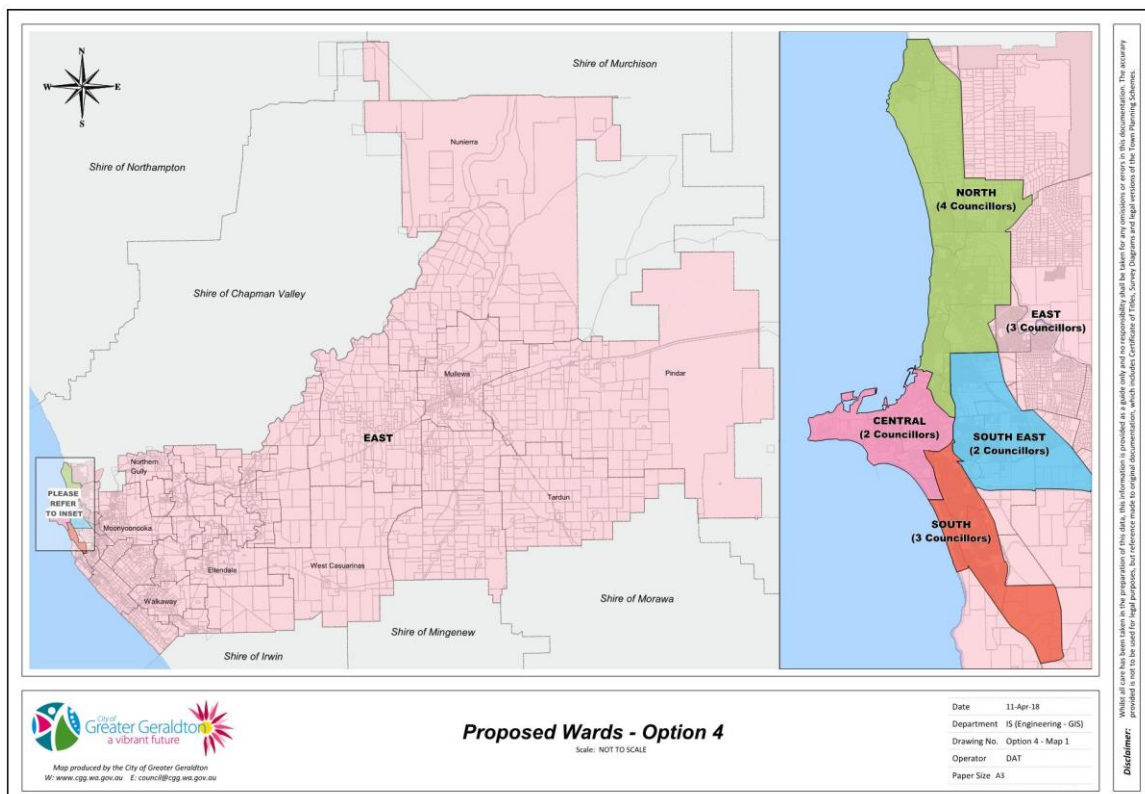
Option 4 - 5 Wards, 14 Councillors, variable number of Councillors per ward

This option uses existing Ward boundaries with wards being combined to achieve even representation.

Differing numbers of Councillors per ward are necessary to 'even out' representation ratios, and the average ratio of electors per Councillor is 1,897.

The ratio of Councillor to electors in each ward is:

Ward	Current ward	Councillors	Ratio	% ratio deviation
North	Champion Bay/ Chapman	4	1,961	-3.36%
East	Hills/ Mullewa	3	1,844	2.83%
Central	Port	2	1,995	-5.12%
South	Tarcoola	3	1,851	2.45%
South East	Willcock	2	1,823	3.92%



Option 5 – No wards

Under this option, there are no wards. The only variable is the number of Councillors.

The ratio of electors per Councillor is:

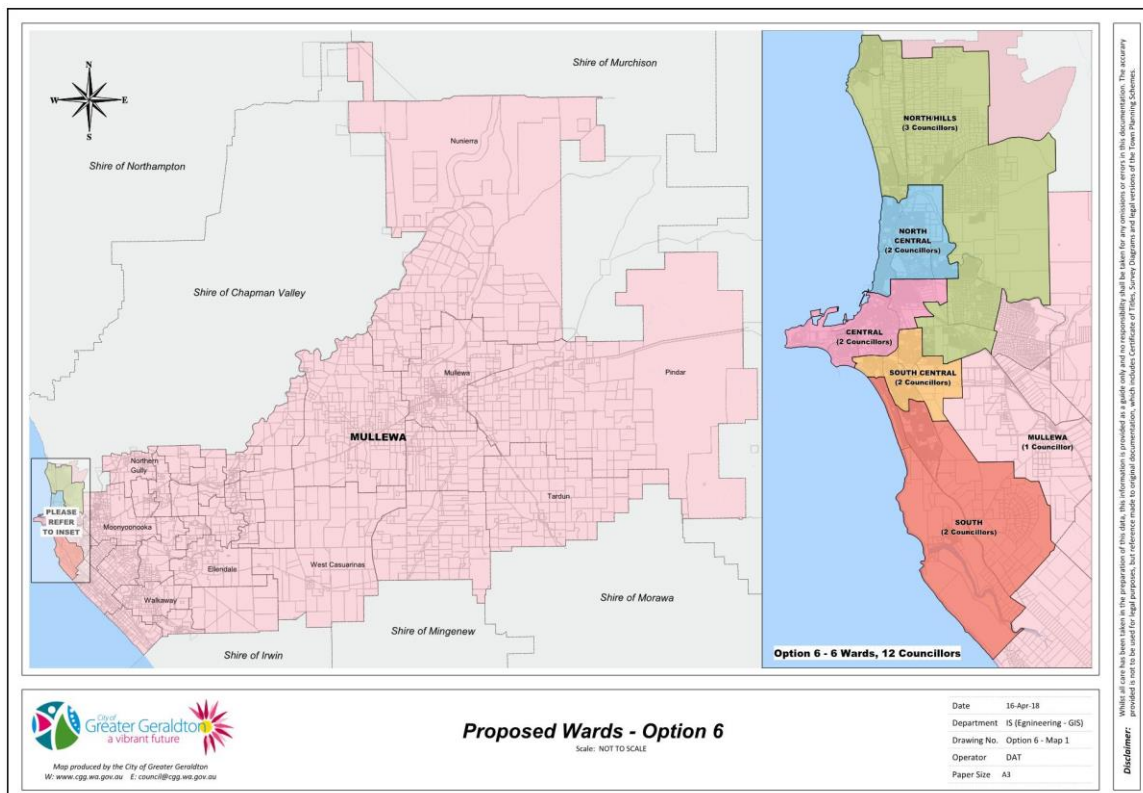
Number of Councillors	Ratio of electors to Councillor
6	4,427
7	3,795
8	3,321
9	2,952
10	2,656
11	2,415
12	2,214
13	2,043
14 (current)	1,897

Option 6 - Mullewa ward (1 Councillor), North/Hills Ward (3 Councillors), 4 other wards with 2 Councillors each

In this option the existing Mullewa ward is expanded, represented by one Councillor. A North/Hills ward with 3 Councillors is created; and 4 other wards with 2 Councillors each.

Whole localities (suburbs) are located within each Ward; the average ratio of electors per Councillor is 2,214. The ratio of Councillor to electors is:

Ward	Councillors	Ratio	% ratio deviation
Mullewa	1	2,245	1.43%
North/Hills	3	2,282	3.09%
North Central	2	2,192	-0.96%
Central	2	2,320	4.82%
South central	2	2,097	-5.29%
South	2	2,127	-3.92%



Other Options

The list above is meant simply to assist with community input and discussion – it is not meant to be exhaustive and other options are welcome.

Transitional arrangements

After undertaking community consultation, the City must make a proposal to the LGAB. The effect of proposed changes on existing Councillors will depend on the precise proposal put forward.

When offices of Councillor are to be redistributed into new wards, or there is a reduction or increase in the number of offices of Councillor, the implementation method must give consideration to clauses 1 and 2 of Schedule 4.2 of the Act.

In summary, this provides that as near as practical to half of the total number of Councillors are to retire every two years and as near as practical to half of the Councillors representing each ward are to retire every two years. It may also be necessary to include in the Governors Order a provision to allocate the existing Councillors to wards, which must also be done in accordance with the provisions and intent of the Act.

How to make a Submission

Submissions must be received by:

4pm, 13 July 2018.

Members of the community are invited to make a written submission about any aspect of this Review of Wards and Elected Member Representation.

Submissions may be forwarded via:

Email: council@cgg.wa.gov.au

Post: PO Box 101 Geraldton WA 6531

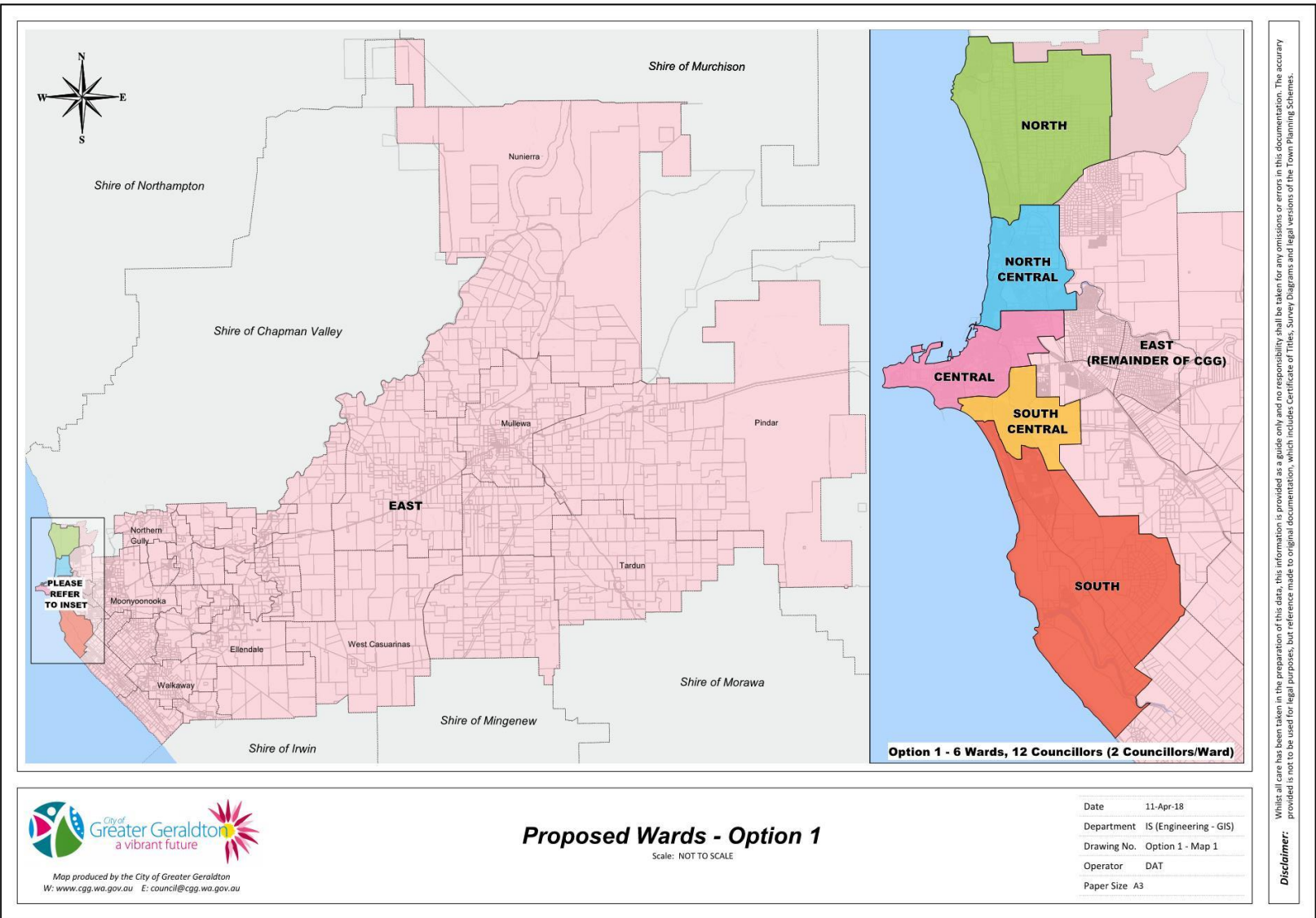
In Person: Administration Building, Civic Centre, 63 Cathedral Avenue
Geraldton WA 6530

Online: www.cgg.wa.gov.au

For further information on this discussion paper, please contact Margot Adam,
Coordinator Governance on (08) 99566600 or email council@cgg.wa.gov.au

Appendix

Localities and Suburbs of the City of Greater Geraldton Option 1 – 6 wards, 12 Councillors, 2 Councillors per ward



Whole localities (suburbs) are located within each Ward; the average ratio of electors per councillor is 2,214.

The ratio of councillor to electors in each ward is:

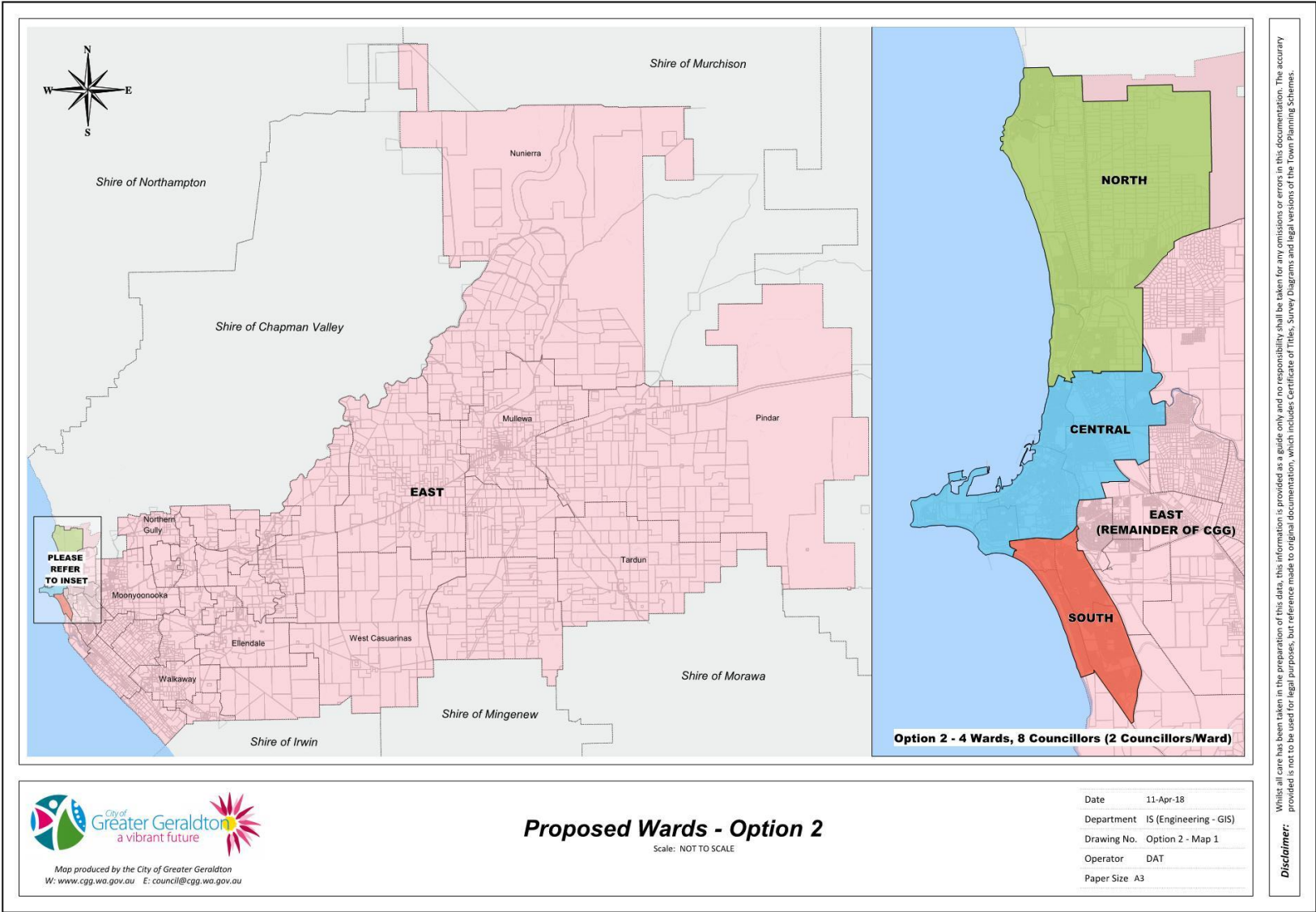
Ward	Councillors	Ratio	% ratio deviation
North	2	2171	-1.93%
North central	2	2192	-0.96%
Central	2	2320	4.82%
South central	2	2097	-5.29%
South	2	2127	-3.92%
East	2	2375	7.291%

Detail by locality

Option 1 - 6 wards, 12 councillors, 2 councillors per ward	
Target ratio of electors per councillor	2,214

Ward	Locality	Electors	Councillors	Ratio	% ratio deviation
North	Drummond Cove	1,024	2	2171	-1.93%
	Glenfield	651			
	Houtman Abrolhos	4			
	Sunset Beach	1,017			
	Waggrakine	1,646			
	Total	4,342			
North central	Bluff Point	933	2	2192	-0.96%
	Spalding	1,439			
	Strathalbyn	853			
	Webborton	132			
	Beresford	1,028			
	Total	4,385			
Central	Wonthella	1,119	2	2320	4.82%
	Geraldton	2,183			
	West End	352			
	Beachlands	987			
	Total	4,641			
South central	Mahomets Flats	574	2	2097	-5.29%
	Mount Tarcoola	2,217			
	Rangeway	1,309			
	Karloo	94			
	Total	4,193			

Ward	Locality	Electors	Councillors	Ratio	% ratio deviation
South	Tarcoola Beach	893	2	2127	-3.92%
	Wandina	2,888			
	Cape Burney	347			
	Rudds Gully	126			
	Total	4,254			
East	Bootenal	28	2	2375	7.291%
	Bringoo	28			
	Burma Road	0			
	Deepdale	606			
	Ellendale	8			
	Eradu	11			
	Eradu South	14			
	Georgina	53			
	Greenough	196			
	Kojarena	18			
	Meru	24			
	Minnenooka	28			
	Moonyoonoka	170			
	Moresby	603			
	Mount Hill	28			
	Northern Gully	11			
	Sandsprings	6			
	South Greenough	69			
	Tibradden	3			
	Walkaway	187			
	Wicherina	7			
	Wicherina South	0			
	Wooree	930			
	Ambania	8			
	Devils Creek	21			
	Mullewa	310			
	Nunierra	8			
	Pindar	21			
	Tardun	24			
	Tenindewa	41			
	West Causuarinas	21			
	Wongoondy	21			
Utakarra	972				
Narngulu	273				
Total	4,750				
Total electors	26,564		12		



Option 2 – 4 Wards, 8 Councillors, 2 Councillors per ward

Whole localities (suburbs) are located within each Ward; the average ratio of electors per councillor is 3,321.

The ratio of councillor to electors in each ward is:

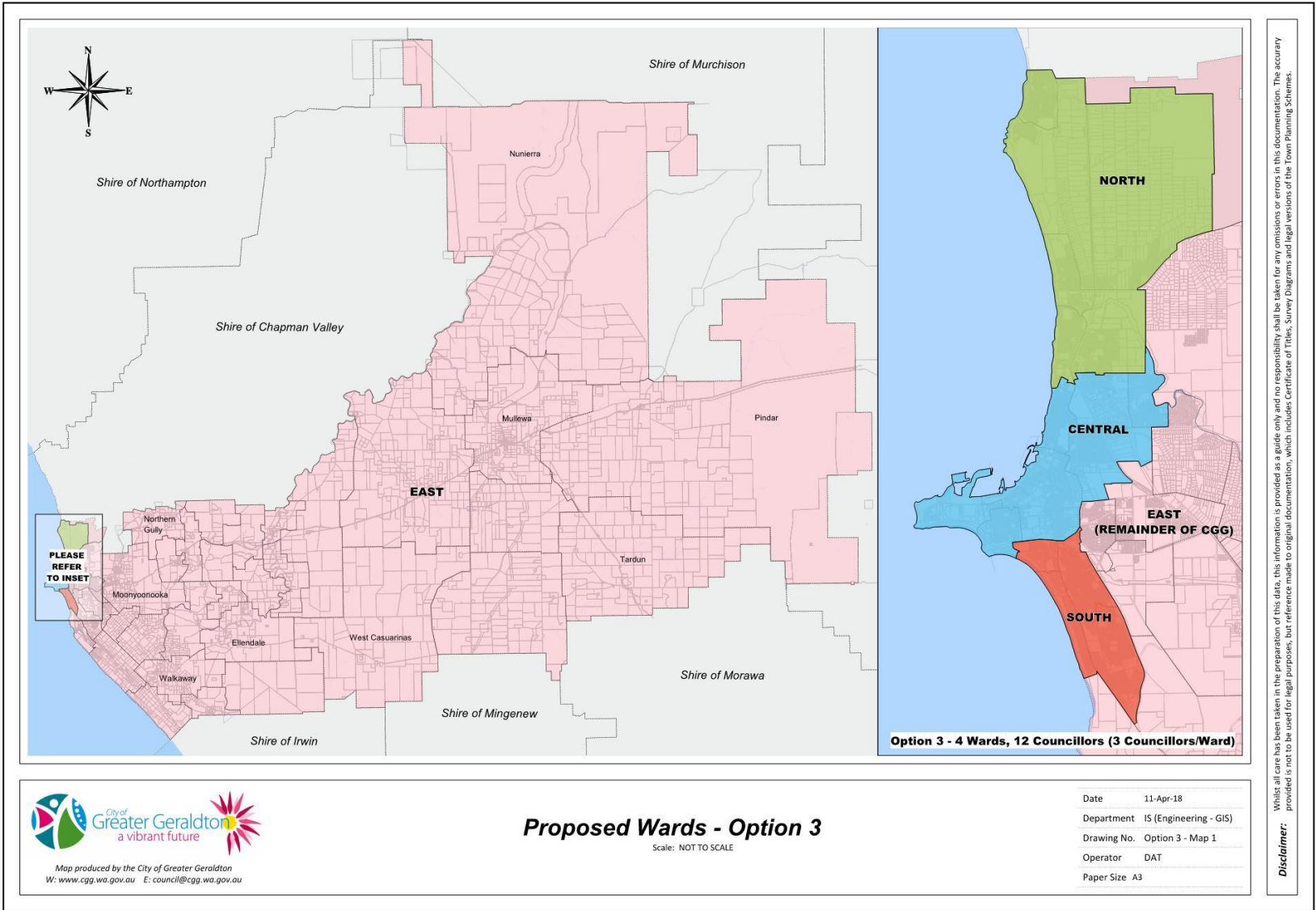
Ward	Councillors	Ratio	% ratio deviation
North	2	3,357	1.10%
Central	2	3,326	0.18%
South	2	3,286	-1.04%
East	2	3,313	-0.24%

Detail by locality

Option 2 - 4 wards, 8 Councillors, 2 councillors per ward	
Target ratio of electors per councillor	3321

Ward	Locality	Electors	Councillors	Ratio	% ratio deviation
North	Drummond Cove	1,024	2	3,357	1.10%
	Glenfield	651			
	Houtman Abrolhos	4			
	Sunset Beach	1,017			
	Waggrakine	1,646			
	Bluff Point	933			
	Spalding	1,439			
	Total	6,714			
Central	Strathalbyn	853	2	3,326	0.18%
	Webborton	132			
	Beresford	1,028			
	Wonthella	1,119			
	Geraldton	2,183			
	West End	352			
	Beachlands	987			
	Total	6,653			
South	Mahomets Flats	574	2	3,286	-1.04%
	Mount Tarcoola	2,217			
	Tarcoola Beach	893			
	Wandina	2,888			
	Total	6,572			
East	Karlooloo	94	2	3,313	-0.24%

Ward	Locality	Electors	Councillors	Ratio	% ratio deviation
	Cape Burney	347			
	Rudds Gully	126			
	Rangeway	1,309			
	Bootenal	28			
	Bringo	28			
	Burma Road	0			
	Deepdale	606			
	Ellendale	8			
	Eradu	11			
	Eradu South	14			
	Georgina	53			
	Greenough	196			
	Kojarena	18			
	Meru	24			
	Minnenooka	28			
	Moonyoonoka	170			
	Moresby	603			
	Mount Hill	28			
	Northern Gully	11			
	Sandsprings	6			
	South Greenough	69			
	Tibradden	3			
	Walkaway	187			
	Wicherina	7			
	Wicherina South	0			
	Wooree	930			
	Ambania	8			
	Devils Creek	21			
	Mullewa	310			
	Nunierra	8			
	Pindar	21			
	Tardun	24			
	Tenindewa	41			
	West Causuarinas	21			
	Wongoondy	21			
	Utakarra	972			
	Narngulu	273			
	Total	6,625			
	Total electors	26,564	8		



Option 3 – 4 Wards, 12 Councillors, 3 Councillors per ward

Whole localities (suburbs) are located within each Ward; the average ratio of electors per councillor is 2,214.

The ratio of councillor to electors in each ward is:

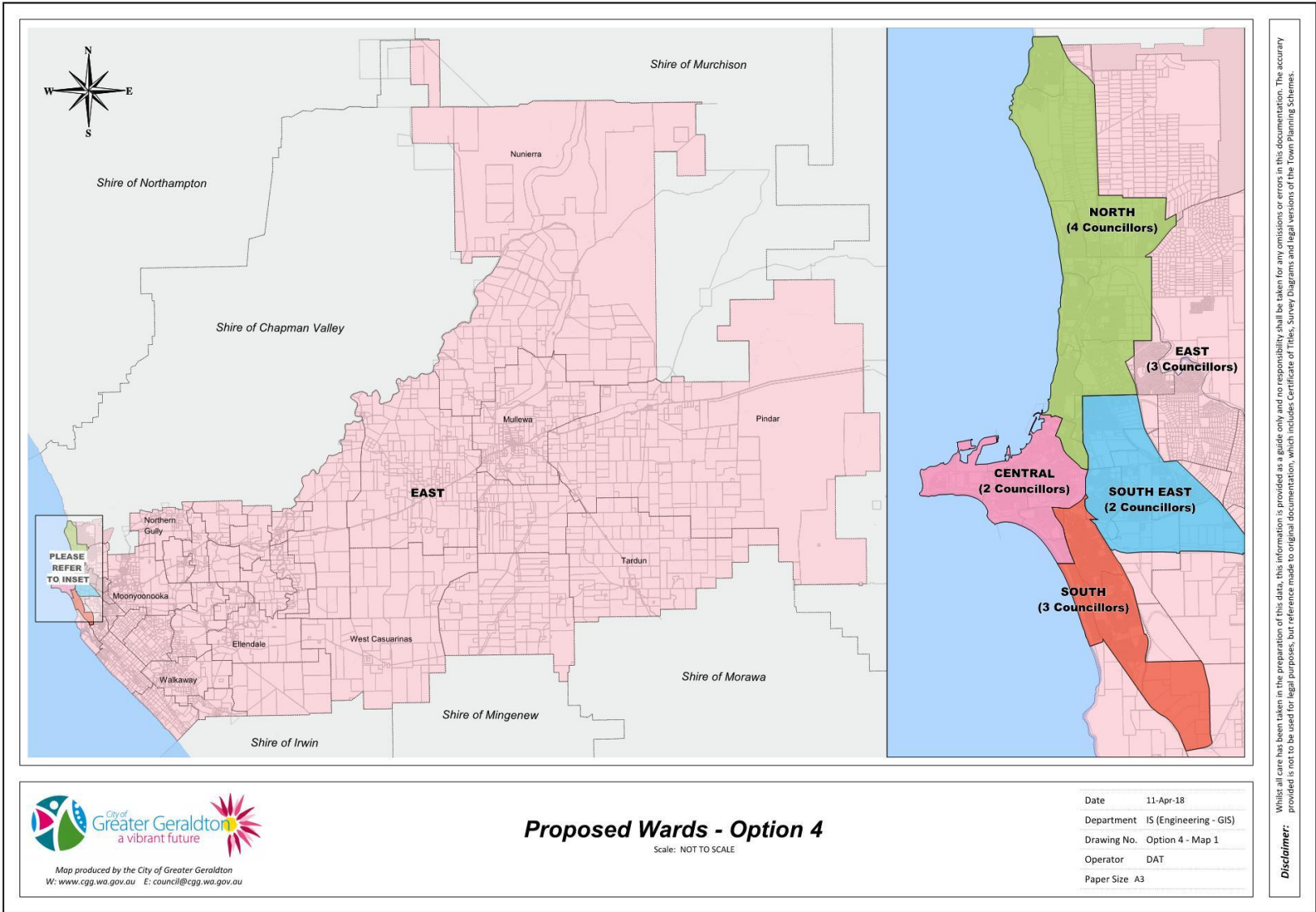
Ward	Councillors	Ratio	% ratio deviation
North	3	2,238	1.10%
Central	3	2,218	0.18%
South	3	2,191	-1.04%
East	3	2,208	-0.24%

Detail by locality

Option 3 - 4 wards, 12 Councillors, 3 councillors per ward	
Target ratio of electors per councillor	2214

Ward	Locality	Electors	Councillors	Ratio	% ratio deviation
North	Drummond Cove	1,024	3	2,238	1.10%
	Glenfield	651			
	Houtman Abrolhos	4			
	Sunset Beach	1,017			
	Waggrakine	1,646			
	Bluff Point	933			
	Spalding	1,439			
	Total	6,714			
Central	Strathalbyn	853	3	2,218	0.18%
	Webborton	132			
	Beresford	1,028			
	Wonthella	1,119			
	Geraldton	2,183			
	West End	352			
	Beachlands	987			
	Total	6,653			
South	Mahomets Flats	574	3	2,191	-1.04%
	Mount Tarcoola	2,217			
	Tarcoola Beach	893			
	Wandina	2,888			
	Total	6,572			
East	Karloo	94	3	2,208	-0.24%
	Cape Burney	347			
	Rudds Gully	126			
	Rangeway	1,309			

Ward	Locality	Electors	Councillors	Ratio	% ratio deviation
	Bootenal	28			
	Bringoo	28			
	Burma Road	0			
	Deepdale	606			
	Ellendale	8			
	Eradu	11			
	Eradu South	14			
	Georgina	53			
	Greenough	196			
	Kojarena	18			
	Meru	24			
	Minnenooka	28			
	Moonyoonoka	170			
	Moresby	603			
	Mount Hill	28			
	Northern Gully	11			
	Sandsprings	6			
	South Greenough	69			
	Tibradden	3			
	Walkaway	187			
	Wicherina	7			
	Wicherina South	0			
	Wooree	930			
	Ambania	8			
	Devils Creek	21			
	Mullewa	310			
	Nunierra	8			
	Pindar	21			
	Tardun	24			
	Tenindewa	41			
	West Causuarinas	21			
	Wongoondy	21			
	Utakarra	972			
	Narngulu	273			
	Total	6,625			
	Total electors	26,564	12		



Option 4 - 5 Wards, 14 Councillors, variable number of Councillors per ward

This option uses existing Ward boundaries. Differing numbers of Councillors per ward are necessary to 'even out' representation ratios, and the average ratio of electors per councillor is 1,897.

The ratio of councillor to electors in each ward is:

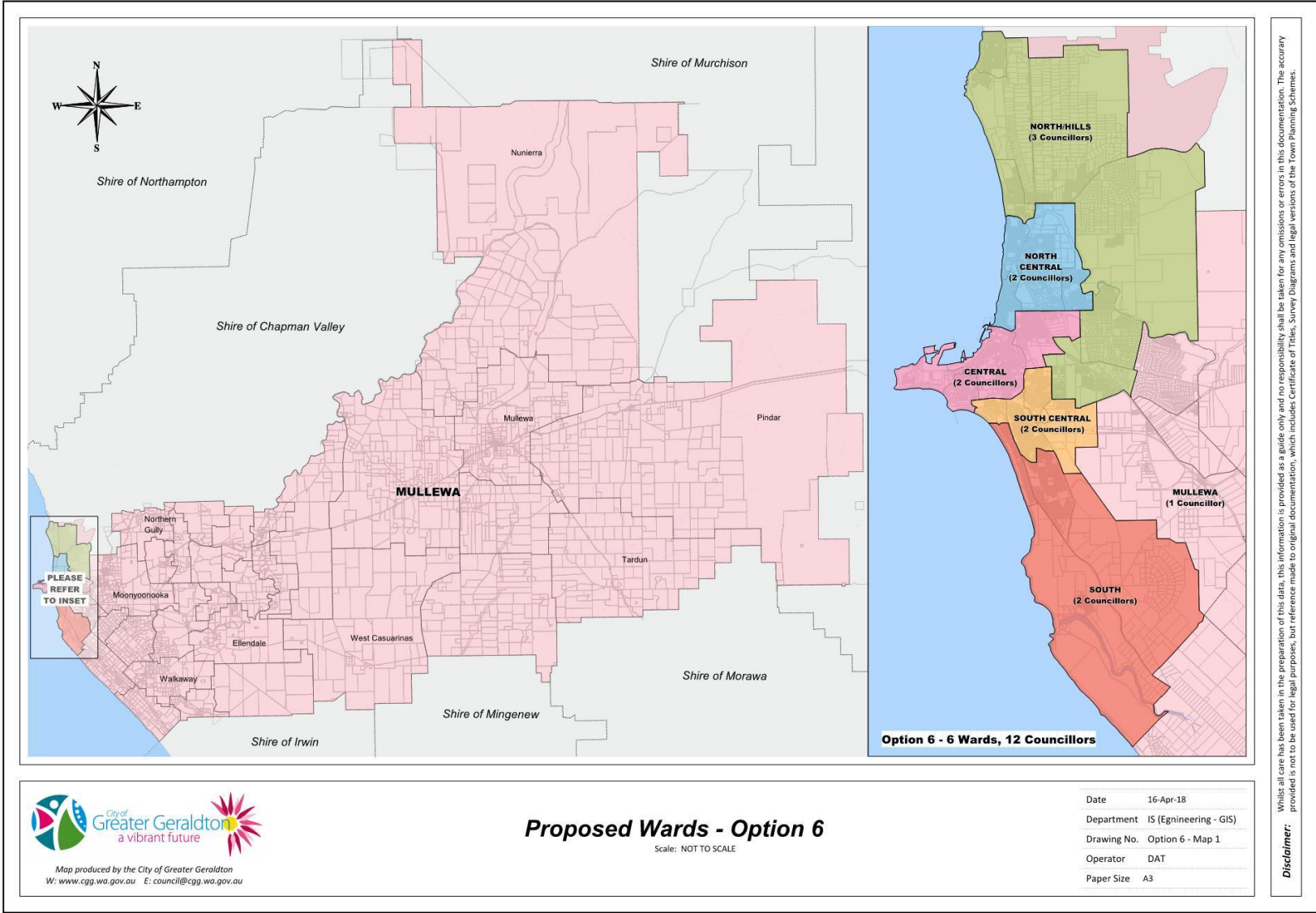
Ward	Previous ward	Councillors	Ratio	% ratio deviation
North	Champion Bay/ Chapman	4	1,961	-3.36%
East	Hills/ Mullewa	3	1,844	2.83%
Central	Port	2	1,995	-5.12%
South	Tarcoola	3	1,851	2.45%
South East	Willcock	2	1,823	3.92%

Option 5 – No wards

Under this option, there are no wards. The only variable is the number of Councillors.

The ratio of electors per Councillor is:

Number of Councillors	Ratio of electors to Councillor
6	4,427
7	3,795
8	3,321
9	2,952
10	2,656
11	2,415
12	2,214
13	2,043
14 (current)	1,897



Disclaimer: Whilst all care has been taken in the preparation of this data, this information is provided as a guide only and no responsibility shall be taken for any omissions or errors in this documentation. The accuracy provided is not to be used for legal purposes, but reference made to original documentation, which includes Certificate of Titles, Survey Diagrams and legal versions of the Town Planning Schemes.

Option 6 - Mullewa ward (1 Councillor), North/Hills Ward (3 Councillors), 4 other wards with 2 Councillors each

Whole localities (suburbs) are located within each Ward; the average ratio of electors per councillor is 2,214.

The ratio of councillor to electors in each ward is:

Ward	Councillors	Ratio	% ratio deviation
Mullewa	1	2,245	1.43%
North/Hills	3	2,282	3.09%
North central	2	2,192	-0.96%
Central	2	2,320	4.82%
South central	2	2,097	-5.29%
South	2	2,127	-3.92%

Detail by locality

Option 6 - Mullewa ward (1 councillor), North/Hills Ward (3 councillors), 4 other wards with 2 councillors each	
Target ratio of electors per councillor	2,214

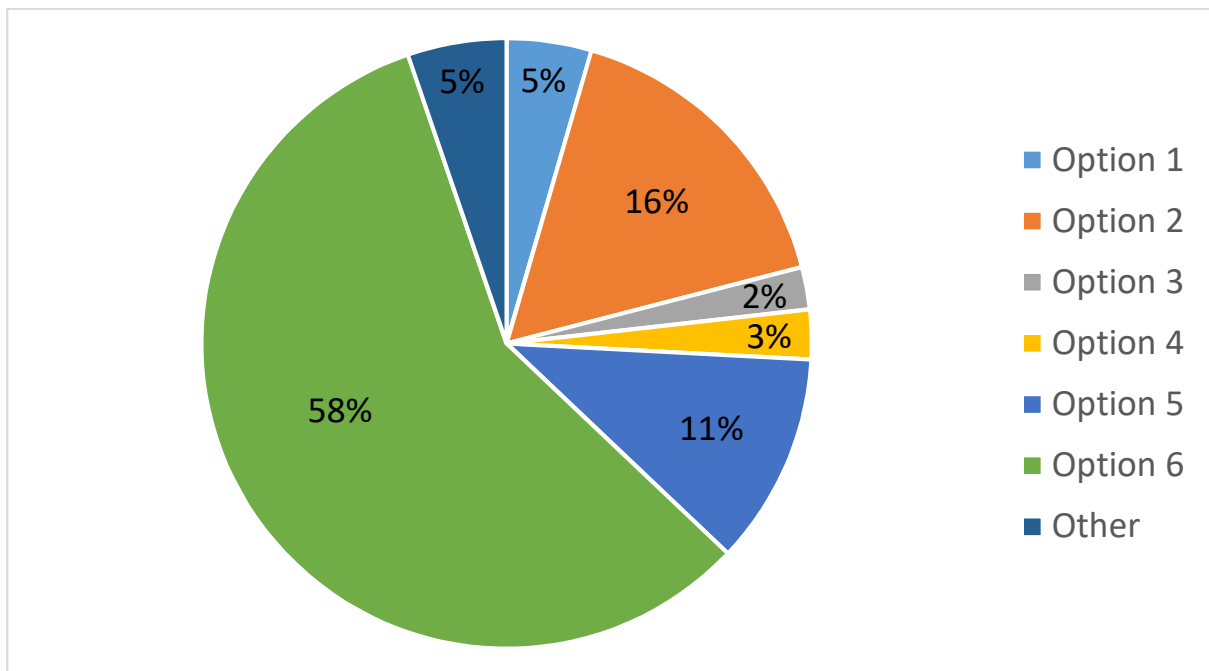
Ward	Locality	Electors	Councillors	Ratio	% ratio deviation
Mullewa	Ambania	8	1	2,245	1.43%
	Devils Creek	21			
	Mullewa	310			
	Nunierra	8			
	Pindar	21			
	Tardun	24			
	Tenindewa	41			
	West Causuarinas	21			
	Wongoondy	21			
	Burma Road	0			
	Ellendale	8			
	Mount Hill	28			
	Eradu	11			
	Eradu South	14			
	Wicherina	7			
	Wicherina South	0			
	South Greenough	69			
	Walkaway	187			
	Minnenooka	28			
	Georgina	53			
	Greenough	196			
	Sandsprings	6			
	Moonyoonoka	170			

Ward	Locality	Electors	Councillors	Ratio	% ratio deviation
	Bootenal	28			
	Deepdale	606			
	Meru	24			
	Narngulu	273			
	Northern Gully	11			
	Tibradden	3			
	Bringo	28			
	Kojarena	18			
	Total	2,245			
North/Hills	Moresby	603	3	2,282	3.09%
	Wooree	930			
	Utakarra	972			
	Drummond Cove	1,024			
	Glenfield	651			
	Houtman Abrolhos	4			
	Sunset Beach	1,017			
	Waggrakine	1,646			
	Total	6,846			
North central	Bluff Point	933	2	2,192	-0.96%
	Spalding	1,439			
	Strathalbyn	853			
	Webborton	132			
	Beresford	1,028			
	Total	4,385			
Central	Wonthella	1,119	2	2,320	4.82%
	Geraldton	2,183			
	West End	352			
	Beachlands	987			
	Total	4,641			
South central	Mahomets Flats	574	2	2,097	-5.29%
	Mount Tarcoola	2,217			
	Rangeway	1,309			
	Karlooloo	94			
	Total	4,193			
South	Tarcoola Beach	893	2	2,127	-3.92%
	Wandina	2,888			
	Cape Burney	347			
	Rudds Gully	126			
	Total	4,254			
	Total electors	26,564	12		

Ward and Representation Review - Community Preferred Options

The City received 124 hardcopy submissions and 145 online submissions during the Ward and Representation Review seven-week long public comment period. Of the 269 submissions received, the majority of contributors, or 58%, were in favour of Option 6: Mullewa Ward (1 Councillor), North/Hills Ward (3 Councillors), 4 other wards (2 Councillors each).

Option 1: Six Wards and 12 Councillors (2 Councillors per ward)	12	5%
Option 2: Four Wards and 8 Councillors (2 Councillors per ward)	44	16%
Option 3: Four Wards and 12 Councillors (3 Councillors per ward)	6	2%
Option 4: Five Wards and 14 Councillors (Variable Councillors per ward)	7	3%
Option 5: No Wards	30	11%
Option 6: Mullewa Ward (1 Councillor), North/Hills Ward (3 Councillors), 4 other wards (2 Councillors each)	156	58%
Other	14	5%
Total Submissions	269	100%





City of Greater Geraldton

Review of Wards and Representation

Additional options

As at 24 August 2018

Summary

Further to the briefing session with elected members on 7 August 2018 councillors have requested information about a number of issues and suggested a number of new options.

An analysis of the options and/or variables is shown below, with further detail shown in the Appendix to this document.

In summary, the following additional options requested comply with the criteria in the Act:

- Option 8B – two wards – Rural and City; 9 councillors (2 for Rural ward, 7 for City ward).
- Option 8C – two wards – City and Rural; 10 councillors (2 for Rural ward, 8 for City ward).
- Option 9 – 5 wards, 13 councillors with varying councillors per ward:
 - North (3 councillors);
 - Central (2 councillors);
 - West (2 councillors);
 - South (3 councillors); and
 - Rural (3 councillors)
- Option 11 - No wards and 10 councillors (note that any option which has no wards and has between 5 and 14 councillors will comply)

Possible transitional arrangements for the 3 options above which involve wards are also provided.

There are positives and negatives to a 'no wards' system, which are summarised below.

Contents

Option 7A - 4 wards, 8 councillors - 2 City and 2 rural wards with 2 councillors each.....	3
Option 7B - 4 wards, 10 councillors - 2 City wards with 3 councillors each, 2 rural wards with 2 councillors each	3
Option 8 - 2 wards – City and Rural	3
Option 8A – two wards – City and Rural; 8 councillors.....	4
Option 8B – two wards – Rural and City; 9 councillors.....	4
Option 8C – Two wards – City and Rural; 10 councillors	5
(Option 2) Four wards, 8 councillors, two per ward.....	6
Option 9 – 5 wards, 13 councillors with varying councillors per ward.....	8
Option 10 - Mullewa Ward and Hills (potentially renamed ‘Greenough’) wards.....	9
Option 11 - No wards and 10 councillors.....	9
Number of local governments in WA with no wards; do they find any issues with this?	10
Who decides the allocation of council positions which expire in 2021?	12
Concerns by Mullewa ward councillors	12
Appendices – Details of Additional Options Analysed.....	14

Option 7A - 4 wards, 8 councillors - 2 City and 2 rural wards with 2 councillors each

(Requested by Cr Bylund)

The target ratio of councillors to electors under this option is 1:3,320.

Assuming the present Mullewa and Hills wards make up the proposed two rural wards (but re-demarcated to ensure an even distribution of electors between them), the ratio of councillors per elector in the two rural wards is 1:1,588.

The ratio of councillors per elector for the two City wards is 1:5,053.

The resulting ratio deviations are -52% for the rural wards and +52% for the remainder of the City. This is significantly outside the 10% plus or minus ratio and highly unlikely to be approved. An initial 'cut' is shown in Appendix 1 but given the significant variation no further analysis has been undertaken.

Note that Option 2 is closest to this proposal. It also provides for 8 councillors and comprises 4 wards, with 2 councillors in the East (or rural) ward and 6 councillors from the remainder of the City, being 3 wards of 2 councillors each. Ratios under Option 2 range from -1.04% to 1.10% and are within the allowable limits.

Option 7B - 4 wards, 10 councillors - 2 City wards with 3 councillors each, 2 rural wards with 2 councillors each

(Requested by Cr Bylund)

The target ratio of councillors to electors under this option is 1:2,656.

Assuming again that the Hills and Mullewa wards make up the proposed country wards, the ratio of councillors per elector in the rural wards is also 1:1,588. The ratio for the rest of the City is 1:3,369.

The resulting ratios are -40% for the rural wards and 27% for the remainder of the City. While an improvement on Option 7A the resulting rural wards are still over represented. It is unlikely to be approved.

Option 8 - 2 wards – City and Rural

(Requested by Cr Colliver)

Under this Option, the City is divided into 2 wards – City and Rural. The only variable under this option is the number of councillors for each ward.

Note that the WA Electoral Commission can supply the number of electors in existing wards for all local governments (see <https://www.elections.wa.gov.au/enrol/enrolment-statistics/local-government-reports>).

This is useful where whole of ward changes are involved but not when localities or suburbs are moved between wards, or when new wards created. In these cases assumptions need to be made about the proportion of population in each locality or suburb who are electors. In the City's case, on average 69% of the population of each suburb or locality are electors.

For consistency with other options modelled this average has been used, but given that this Option involves combining the whole of existing Wards the outcomes have been cross checked against the July 2018 WAEC elector enrolments for the proposed Rural (former Hills and Mullewa wards) and City wards (former Chapman, Tarcoola, Port, Willcock and Champion Bay wards).

This is relevant as the WAEC figures indicate that while there has been little change in the total number of electors across the City the Hills and Mullewa wards have a lower average percentage of their populations enrolled as electors than other wards – and the LGAB is likely to prefer the WAEC figures if this Option is put forward.

An analysis of Option 8, using councillors of 8, 9 and 10 appears below.

Option 8A – two wards – City and Rural; 8 councillors

Using average % of electors	Cross check using WAEC current ward elector figures
<ul style="list-style-type: none"> The target ratio of councillors per elector is 1:3,321; 6 councillors would represent the City ward, with a ratio of 1:3,369 and a deviation of 1.46% from the average); and 2 councillors would represent the Rural ward, with a ratio of 1:3,175 and a deviation of -4.37%. 	<ul style="list-style-type: none"> The target ratio of councillors per elector is 1:3,262; 6 councillors would represent the City ward, with a ratio of 1:3,452 and a deviation of 3.95% from the average); and 2 councillors would represent the Rural ward, with a ratio of 1:2,695 and a deviation of -18.84%.

This option meets the criteria using the 'average' electors model used elsewhere but not using WAEC electors per current ward. It is unlikely to be approved.

Option 8B – two wards – Rural and City; 9 councillors

Using average % of electors	Cross check using WAEC current ward elector figures
<ul style="list-style-type: none"> The target ratio of councillors per elector is 1:2,952; 7 councillors would represent the City ward, with a ratio of 1:2,888 and a deviation of -2.17% from the average); and 2 councillors would represent the Rural ward, with a ratio of 1:3,175 and a deviation of 7.58%. 	<ul style="list-style-type: none"> The target ratio of councillors per elector is 1:2,900; 7 councillors would represent the City ward, with a ratio of 1:2,958 and a deviation of 0.23% from the average); and 2 councillors would represent the Rural ward, with a ratio of 1:2,695 and a deviation of -8.69%.

This option meets the required ratio criteria under the Act using both approaches. It is likely to be approved.

Transitional arrangements could be as shown below. Assuming that council decides not to request a spill of all positions and the LGAB agrees, councillors whose terms do not expire until 2021 could be assigned to wards as follows:

Councillors whose terms expire in 2021	Current ward represented	Current locality/ suburb of residence	Current ward of residence	Ward of residence under Option 8B
Natasha Colliver	Tarcoola Ward	Mount Tarcoola	Tarcoola	City
Victor Tanti	Port Ward	West End	Port	City
Steve Douglas	Champion Bay Ward	Mount Tarcoola	Tarcoola	City
Jerry Clune	Hills Ward	Bringo	Hills	Rural
Sally Elphick	Willcock	Wonthella	Willcock	City
Jennifer Critch	Mullewa	Tenindewa	Mullewa	Rural
David Caudwell	Chapman	Beresford	Champion Bay	City

In 2019 there would be an election for 2 councillors, both from the proposed City ward for a 4 year term each. There would be no election in the Rural ward.

In 2021 there would be an election for 7 councillors:

- 2 Rural ward councillors – 1 for a 2 year term and 1 for a 4 year term; and
- 5 City ward councillors – 3 for 4 year terms and 2 for 2 year terms.

In 2023 there would be an election for 4 councillors:

- 1 Rural ward councillor for a 4 year term; and
- 3 City ward councillors for 4 year terms each.

Option 8C – Two wards – City and Rural; 10 councillors

Using average % of electors	Cross check using WAEC current ward elector figures
<ul style="list-style-type: none"> • The target ratio of councillors per elector is 1:2,656; • 8 councillors would represent the City ward, with a ratio of 1:2,527 and a deviation of -4.88% from the average); and • 2 councillors would represent the Rural ward, with a ratio of 1:3,175 and a deviation of 19.53%. 	<ul style="list-style-type: none"> • The target ratio of councillors per elector is 1:2,610; • 8 councillors would represent the City ward, with a ratio of 1:2,589 and a deviation of -2.55% from the average); and • 2 councillors would represent the Rural ward, with a ratio of 1:2,695 and a deviation of -1.45%.

This option is outside the allowable % deviation using an average of electors (ie the City ward is under represented); however given that the LGAB will use WAEC figures is likely to be approved.

Transitional arrangements could be as shown below and are similar to Option 8B. Assuming that council decides not to request a spill of all positions and the LGAB agrees, councillors whose terms do not expire until 2021 could be assigned to wards as follows:

Councillors whose terms expire in 2021	Current ward represented	Current locality/ suburb of residence	Current ward of residence	Ward of residence under Option 8C
Natasha Colliver	Tarcoola Ward	Mount Tarcoola	Tarcoola	City
Victor Tanti	Port Ward	West End	Port	City
Steve Douglas	Champion Bay Ward	Mount Tarcoola	Tarcoola	City
Jerry Clune	Hills Ward	Bringoo	Hills	Rural
Sally Elphick	Willcock	Wonthella	Willcock	City
Jennifer Critch	Mullewa	Tenindewa	Mullewa	Rural
David Caudwell	Chapman	Beresford	Champion Bay	City

In 2019 there would be an election for 3 councillors, all from the proposed City ward for a 4 year term each. There would be no election in the Rural ward.

In 2021 there would be an election for 7 councillors:

- 2 Rural ward councillors – 1 for a 2 year term and 1 for a 4 year term; and
- 5 City ward councillors – 3 for 4 year terms and 2 for 2 year terms.

In 2023 there would be an election for 5 councillors:

- 1 Rural ward councillor for a 4 year term; and
- 3 City ward councillors for 4 year terms each, and 1 for a 2 year term.

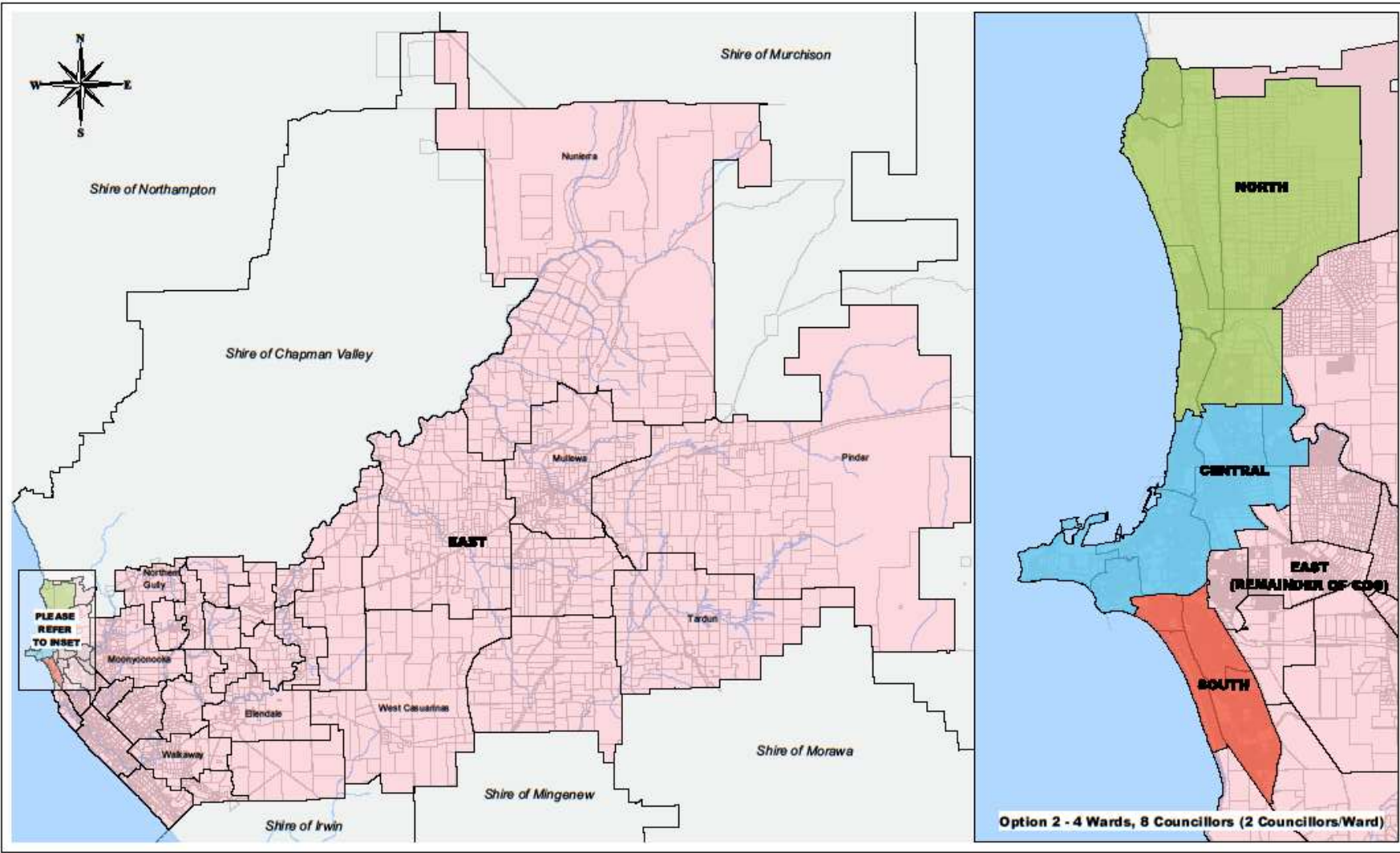
(Option 2) Four wards, 8 councillors, two per ward

(Requested by Cr Caudwell)

This is Option 2, summarised below. The average ratio of electors per councillor is 3,321. The ratio of councillor to electors in each ward is:

Ward	Councillors	Ratio	% ratio deviation
North	2	3,357	1.10%
Central	2	3,326	0.18%
South	2	3,286	-1.04%
East	2	3,313	-0.24%

This option is likely to be approved. Possible transitional arrangements are as previously advised.



Option 2 - 4 Wards, 8 Councillors (2 Councillors/Ward)



Map produced by the City of Greater Geraldton
 W: www.cgg.wa.gov.au E: council@cgg.wa.gov.au

Proposed Wards - Option 2

Scale: NOT TO SCALE

Date	11-Apr-18
Department	IS (Engineering - GIS)
Drawing No.	Option 2 - Map 1
Operator	DAT
Paper Size	A3

Disclaimer: Whilst all care has been taken in the preparation of this data, this information is provided as a guide only and no responsibility shall be taken for any omissions or errors in this documentation. The accuracy provided is not to be used for legal purposes, but reference made to original documentation, which includes Certificate of Titles, Survey Diagrams and legal versions of the town Planning Schemes.

Option 9 – 5 wards, 13 councillors with varying councillors per ward

(Requested by Cr Elphick)

Under this option, the suburbs (localities) of Utakarra, Karloo, Rangeway and Wonthella are grouped together into a proposed Central ward. They are all presently part of the Willcock ward except for Wonthella, which is split between Willcock and Champion Bay wards.

In order to meet the required ratio outcomes 13 councillors are needed over 5 wards and the localities (suburbs) of Rudds Gully and Narngulu added to the proposed Central ward in order to fall within the allowable ratios.

The target ratio of councillors to electors under this option is 1:2,043. The number of councillors per ward varies as shown below:

Ward	Electors	Councillors	Ratio	% ratio deviation
North	6,228	3	2,076	1.59%
Central	3,892	2	1,946	-4.77%
West	4,096	2	2048	0.23%
South	5,998	3	1,999	-2.16%
Rural	6,351	3	3,313	3.60%
Total	26,564	13		

A detailed breakdown of localities in each ward under this option is shown in the Appendix.

This option is likely to be approved.

Transitional arrangements could be as shown below. Assuming that council decides not to request a spill of all positions and the LGAB agrees, councillors whose terms do not expire until 2021 could be assigned to wards as follows:

Councillors whose terms expire in 2021	Current ward represented	Current locality/ suburb of residence	Current ward of residence	Ward of residence under Option 9	Comments
Natasha Colliver	Tarcoola Ward	Mount Tarcoola	Tarcoola	South	
Victor Tanti	Port Ward	West End	Port	West	
Steve Douglas	Champion Bay Ward	Mount Tarcoola	Tarcoola	South	
Jerry Clune	Hills Ward	Bringoo	Hills	Rural	
Sally Elphick	Willcock	Wonthella	Willcock	Central	
Jennifer Critch	Mullewa	Tenindewa	Mullewa	Rural	

Councillors whose terms expire in 2021	Current ward represented	Current locality/ suburb of residence	Current ward of residence	Ward of residence under Option 9	Comments
David Caudwell	Chapman	Beresford	Champion Bay	North	

Assuming Council and the LGAB agree with the allocation above, possible transitional arrangements under this option are relatively simple:

- In 2019, an election is held for 6 councillors, all for 4 year terms each and representing the following wards:
 - North ward – 2 councillors
 - Central ward – 1 councillor
 - West ward – 1 councillor
 - South ward – 1 councillor
 - Rural ward – 1 councillor
- In 2021, an election is held for 7 councillors, all for 4 year terms and representing the following wards:
 - North ward – 1 councillor
 - Central ward – 1 councillor
 - West ward – 1 councillor
 - South ward – 2 councillors
 - Rural ward – 2 councillors

Option 10 - Mullewa Ward and Hills (potentially renamed 'Greenough') wards

(Requested by Cr Clune)

It is not possible to have separate Mullewa and Hills wards without combining them or adding other localities and meet the LGABs ratio requirements. There are few electors in the current Mullewa ward relative to the rest of the district.

The closest however to it is Option 6. Under that option the proposed South ward under that option could be renamed 'Greenough' and which has two councillors allocated. There is one councillor allocated to the proposed Mullewa ward.

Possible transitional arrangements are as previously advised.

Option 11 - No wards and 10 councillors

(Requested by Cr Douglas)

Under this scenario, the only matter to consider is how to drop from the present number of 14 to 10, so that the final result reflects the requirements of the legislation (ie, half retire at each election). As previously noted the LGAB will seek to allow existing councillors to serve out their terms of office if possible so that there is no 'spill'.

If reduced to 10 and council does not support a spill of all positions transitional arrangements are likely to be:

- The 7 councillors whose terms of office expire in 2021 continue;
- In 2019 an election is held for 3 councillors for 4 year terms of office each (expire in 2023); and
- In 2021 an election is held for 7 councillors, 4 of whom are elected for 4 year terms (expire in 2025) and 3 for 2 year terms (expire in 2023); and
- In 2023 an election is held for 5 councillors for 4 year terms each.

Number of local governments in WA with no wards; do they find any issues with this?

(Requested by Cr Keemink)

There are 85 local governments in WA that have no wards. Those that have a comparable area, location or population to Greater Geraldton are highlighted below, plus ratios of councillor per elector and councillors per km2.

Local Government	Number of electors	Area (km2)	No of councillors	Councillors per elector	Councillors per km2	Comments
City of Busselton	26,817	1,454	9	2,980	162	
City of Greater Geraldton	26,564	9,889	14	1,897	706	Plus Mayor elected at large
City of Bunbury	22,562	66	11	2,051	6	Plus Mayor elected at large
Shire of Harvey	18,269	1,766	13	1,405	136	
City of Kalgoorlie Boulder	16,634	95,228	7	2,376	13,604	Plus Mayor elected at large
Shire of Murray	12,172	1,821	9	1,352	202	
Shire of Capel	11,227	554	9	1,247	62	
Shire of Augusta Margaret River	9,827	2,138	7	1,404	305	
Shire of Dardanup	9,506	518	8	1,188	65	
Town of Port Hedland	7,573	1,844	8	947	231	Plus Mayor elected at large
Shire of Collie	6,292	1,685	11	572	153	
Shire of Wongan Ballidu	930	3,369	7	133	481	
Shire of Lake Grace	923	11,890	9	103	1,321	
Shire of Dalwallinu	809	7,187	9	90	799	

Local governments across the State were canvassed as to their perception of the advantages and disadvantages of wards vs no wards. Feedback received is summarised below:

Advantages of 'no wards'	Disadvantages of 'no wards'
<ul style="list-style-type: none"> ○ Elected members are elected by the whole community not just a section of it. ○ Knowledge and interest in all areas of the Council's affairs would result broadening the views beyond the immediate concerns of those in a ward. ○ The smaller town sites and rural areas have the whole Council working for them. ○ Members of the community who want to approach an elected member can speak to any elected member. ○ Social networks and communities of interest are often spread across a local government and elected members can have an overview of these. ○ Elected members can use their specialty skills and knowledge for the benefit of the whole local government. ○ There is balanced representation with each elected member representing the whole community. ○ The election process is much simpler for the community to understand and administer. ○ Promotes the concept of a whole-of-City focus, with Councillors being elected by and concerned for the local government as a whole, rather than parochial interests. ○ Gives residents and ratepayers a choice of Councillors to approach with their concerns. ○ Each voter has the opportunity to express a preference for every candidate for the council election. ○ Councillors can use their speciality skills and knowledge for the benefit of the whole community. ○ Removes the need to (re)define internal ward boundaries. 	<ul style="list-style-type: none"> ○ Electors may feel that they are not adequately represented if they don't have an affinity with any of the elected members. ○ Elected members living in a certain area may have a greater affinity and understanding of the issues specific to that area. ○ There is potential for an interest group to dominate the Council. ○ Elected members may feel overwhelmed by having to represent all electors and may not have the time or opportunity to understand and represent all the issues. ○ It may be more difficult and costly for candidates to be elected if they need to canvass the whole local government area. ○ May lead to significant communities of interest and points of view being unrepresented or for others to dominate. ○ May lead to confusion of responsibilities and duplication of effort on the part of Councillors. ○ Large numbers of candidates might be confusing for voters. ○ May lead to Councillors being relatively inaccessible for residents of parts of the local government area. ○ May be difficult for voters to assess the performance of individual Councillors. ○ In some LGs it may be appropriate to have wards, for example where you might have 2 or more "large" population centres (eg the Shire of Coolgardie has Coolgardie and Kambalda which are roughly equal in size).

Who decides the allocation of council positions which expire in 2021?

(Query from Cr Douglas)

The Local Government Advisory Board. It makes a recommendation to the Minister about any transitional arrangements, which the Minister may only accept or reject.

However providing any final arrangements comply with the overall requirements of the Act (ie, half retire at each election, and if a local government has wards half the councillors in each ward are to retire), the Board will usually agree to a proposal put forward by a local government.

If a council cannot decide an allocation from an existing ward to a new ward by a continuing councillor, the Board will allocate them to a ward, or order a spill of all positions.

Cr Douglas has also advised he has a preference to transfer to a new ward which takes in Champion Bay. This will depend on which option is approved. At present, Champion Bay ward is made up of the localities of Beresford, Spalding, Webberton and approximately 15% of Geraldton.

Some elected members have expressed interest in a 4 ward, 8 councillors system which appears in the discussion used for public consultation as Option 2. Transitional arrangements require discussion and agreement by Council but under that Option localities of the former Champion Bay are allocated between the proposed North ward (Spalding) and Central (Webberton, Beresford and Geraldton).

Under potential transitional arrangements for Option 2 circulated to elected members at the briefing session held on 7 August 2018, Cr Douglas was nominally allocated to the proposed South ward.

Allocation to the proposed North or Central wards is possible but will require agreement by Council and approval by the LGAB (as will all other transitional arrangements).

Concerns by Mullewa ward councillors

(Raised by Councillors Thomas and Critch)

- 1) *Is there a way to go to the Local Government Advisory Board and Minister and remind them that the future of other shires amalgamating rely on these outcomes. Everywhere we go and speak to other councillors we are asked about how the amalgamation is going? And their shires are looking at our results for their future direction. If we have to follow the 1 vote 1 value rule it will mean that two old shires could end up with no councillor representing them. This is a worry for all our constituents and the future of amalgamations state wide.*

A letter was sent to the Minister on 27 April 2018 and his response of 21 May circulated to elected members.

In its 'Guide for Local Governments as to how to conduct a review of wards and representation for local governments with and without a ward system (December 2014)' the Local Government Advisory Board states that:

The Board considers that the ratio of councillors to electors is particularly significant.

...

It is expected that each local government will have similar ratios of electors to councillors across its wards. The Board will be reluctant to recommend (to the Minister) changes to ward boundaries and representation that result in ward councillor/elector ratios that are greater than plus or minus 10% unless exceptional circumstances apply.

It is open to council to make a submission to the Board that does not comply with its guidelines but which council believes is the most appropriate for the district. The prospects of the Board recommending it to the Minister (and it then being accepted) are considered highly unlikely.

No part or whole of what constituted the former Shires of Greenough and Mullewa would be unrepresented under any outcome.

- 2) *Looking at the results of the survey there is an overwhelming response from Mullewa residents to keep a rural ward. They feel strongly that an option similar to option 6 was the best option but most commented that they were still unhappy with that option as it still encompasses some urban and semi - urban areas and they are concerned with losing their identity. Councillor Elphick had some great points on having communities of interest in the same Ward. All the specific factors that the LG Advisory Board take into account when conducting a Ward review. We still feel that the borders need to be tweaked to truly only encompass rural areas.*

Using the maximum number of councillors allowable under the Local Government Act of 14, it is possible to have 14 wards of one councillor each. Each ward would then need to be made up of 1,897 electors, but there are not enough electors in what could be termed exclusively 'rural' areas to make up a ward of sufficient size. The current Mullewa ward comprises around 400 electors.

Option 6 is the closest possible to a ward comprising exclusively rural areas that complies with the Board's overriding preference for 1 vote 1 value, although under all options analysed which use wards rural areas have been grouped together to reflect communities of interest.

- 3) *Our other concern is option 6 is just too large for one representative in terms of land mass. There are three main townsites and there are at least 6 local progress associations and other clubs to attend to in the region. How will one person be able to attend and represent the whole area?*

Under Option 6 one councillor is proposed. Other options propose multiple councillors for the area comprising current Mullewa and Hills wards however. Option 9 may be of interest in this regard.

- 4) *Our residents are very vocal in their opinion that there should be at least 12 councillors as is reflected in the survey.*

Council may propose up to 14 councillors. Option 9 above proposes 13 councillors and may be of interest; it proposes a Rural ward made up of the current Hills and Mullewa wards with three councillors.

Appendices – Details of Additional Options Analysed

Option 7A - 4 wards, two City, two country; two councillors in each (total 8 councillors)

Target ratio of electors per councillor 3321

Ward	Locality	Electors	Councillors	Ratio	% ratio deviation
Rural (Comprises former Mullewa and Hills wards)	Bootenal	28	4	1588	-52.19%
	Bringo	28			
	Burma Road	0			
	Cape Burney	347			
	Deepdale	606			
	Ellendale	8			
	Eradu	11			
	Eradu South	14			
	Georgina	53			
	Greenough	196			
	Kojarena	18			
	Meru	24			
	Minnenooka	28			
	Moonyoonoka	170			
	Moresby	603			
	Mount Hill	28			
	Northern Gully	11			
	Sandsprings	6			
	South Greenough	69			
	Strathalbyn	853			
	Tibradden	3			
	Waggrakine	1,646			
	Walkaway	187			
	Wicherina	7			
	Wicherina South	0			
	Wooree	930			
	Ambania	8			
	Devils Creek	21			
	Mullewa	310			
	Nunierra	8			
	Pindar	21			
	Tardun	24			
Tenindewa	41				
West Causuarinas	21				
Wongoondy	21				
	Total	6351			
Rest of City	Total	20,213	4	5053	52.19%
	Totals	26,564	8		

Option 7B - 4 wards, 10 Councillors, 3 councillors per 'City' ward and 2 councillors per country ward

Target ratio of electors per councillor 2656

Ward	Locality	Electors	Councillors	Ratio	% ratio deviation
Rural	Bootenal	28	4	1588	-40.23%
	Bringoo	28			
	Burma Road	0			
	Cape Burney	347			
	Deepdale	606			
	Ellendale	8			
	Eradu	11			
	Eradu South	14			
	Georgina	53			
	Greenough	196			
	Kojarena	18			
	Meru	24			
	Minnenooka	28			
	Moonyoonoka	170			
	Moresby	603			
	Mount Hill	28			
	Northern Gully	11			
	Sandsprings	6			
	South Greenough	69			
	Strathalbyn	853			
	Tibradden	3			
	Waggrakine	1,646			
	Walkaway	187			
	Wicherina	7			
	Wicherina South	0			
	Wooree	930			
	Ambania	8			
	Devils Creek	21			
	Mullewa	310			
	Nunierra	8			
Pindar	21				
Tardun	24				
Tenindewa	41				
West Causuarinas	21				
Wongoondy	21				
	Total	6351			
Rest of City (4 wards)	Total	20,213	6	3369	26.82%
	Totals	26564	10		

Option 8A - two wards, one City, one Rural, 8 councillors

Target ratio of electors per councillor 3321

Ward	Locality	Electors	Coun cillors	Ratio	% ratio deviation
Rural	Bootenal	28	2	3175	-4.37%
	Bringoo	28			
	Burma Road	0			
	Cape Burney	347			
	Deepdale	606			
	Ellendale	8			
	Eradu	11			
	Eradu South	14			
	Georgina	53			
	Greenough	196			
	Kojarena	18			
	Meru	24			
	Minnenooka	28			
	Moonyoonoka	170			
	Moresby	603			
	Mount Hill	28			
	Northern Gully	11			
	Sandsprings	6			
	South Greenough	69			
	Strathalbyn	853			
	Tibradden	3			
	Waggrakine	1,646			
	Walkaway	187			
	Wicherina	7			
	Wicherina South	0			
	Wooree	930			
	Ambania	8			
	Devils Creek	21			
	Mullewa	310			
	Nunierra	8			
	Pindar	21			
	Tardun	24			
Tenindewa	41				
West Causuarinas	21				
Wongoondy	21				
	Total	6351			

Using 2018 WAEC figures (see covering report)

Target ratio of electors per councillor 3262

Ratio	% ratio deviation
2695	-18.84%
Total	5390

Option 8A - two wards, one City, one Rural, 8 councillors

**Using 2018 WAEC figures
(see covering report)**

City ward	Beresford	1,028	6	3369	1.46%				
	Spalding	1,439							
	Webborton	132							
	Geraldton	2,183							
	Bluff Point	933							
	Drummond Cove	1,024							
	Glenfield	651							
	Houtman Abrolhos	4							
	Sunset Beach	1,017							
	Beachlands	987							
	West End	352							
	Tarcoola Beach	893							
	Mahomets Flats	574							
	Mount Tarcoola	2,217							
	Rudds Gully	126							
	Wandina	2,888							
	Karoo	94							
	Narngulu	273							
	Rangeway	1,309							
	Utakarra	972							
Wonthella	1,119								
	Total	20213				Total	20709	3452	3.95%
		26,564	8				26099		

Option 8B - two wards, one City, one Rural, 9 councillors

Target ratio of electors per councillor

2952

Ward	Locality	Electors	Councillors	Ratio	% ratio deviation
Rural	Bootenal	28	2	3175	7.58%
	Bringoo	28			
	Burma Road	0			
	Cape Burney	347			
	Deepdale	606			
	Ellendale	8			
	Eradu	11			
	Eradu South	14			
	Georgina	53			
	Greenough	196			
	Kojarena	18			
	Meru	24			
	Minnenooka	28			
	Moonyoonooka	170			
	Moresby	603			
	Mount Hill	28			
	Northern Gully	11			
	Sandsprings	6			
	South Greenough	69			
	Strathalbyn	853			
	Tibradden	3			
	Waggrakine	1,646			
	Walkaway	187			
	Wicherina	7			
	Wicherina South	0			
	Wooree	930			
	Ambania	8			
	Devils Creek	21			
	Mullewa	310			
	Nunierra	8			
Pindar	21				
Tardun	24				
Tenindewa	41				
West Causuarinas	21				
Wongoondy	21				

Using 2018 WAEC figures (see covering report)

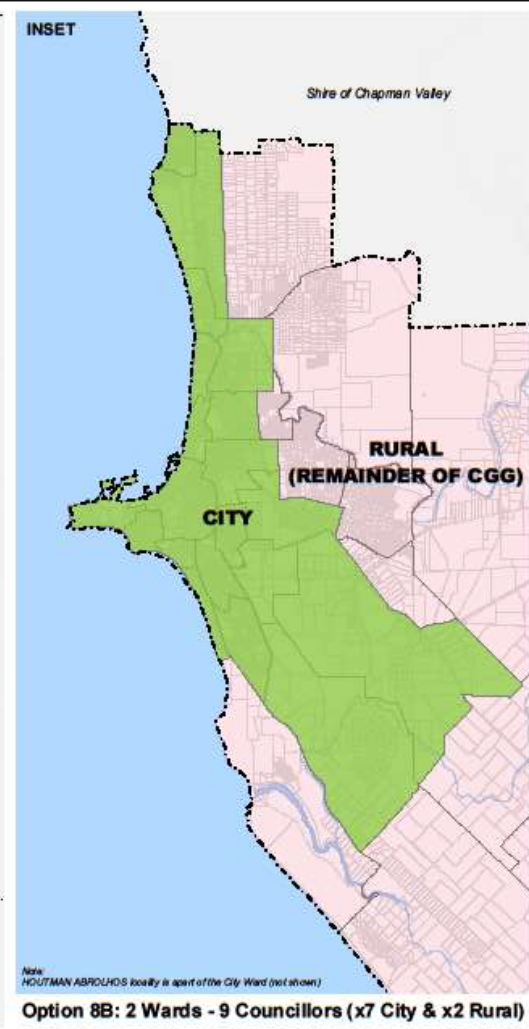
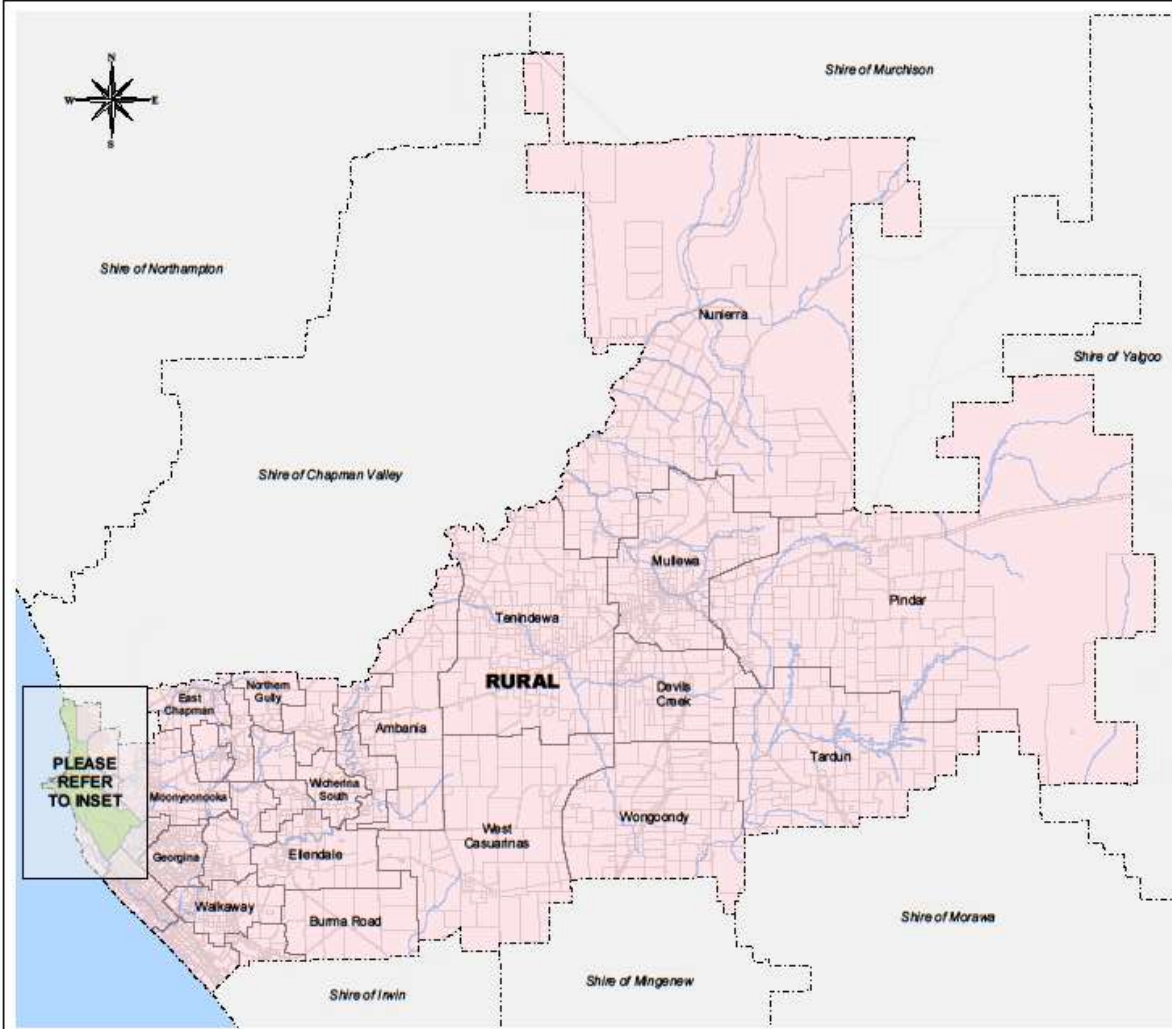
Target ratio of electors per councillor 2900

Ratio	% ratio deviation
2695	-8.69%

Option 8B - two wards, one City, one Rural, 9 councillors

Using 2018 WAEC figures (see covering report)

	Total	6351				Total	5390		
City	Beresford	1,028	7	2888	-2.17%	Total			
	Spalding	1,439							
	Webborton	132							
	Geraldton	2,183							
	Bluff Point	933							
	Drummond Cove	1,024							
	Glenfield	651							
	Houtman Abrolhos	4							
	Sunset Beach	1,017							
	Beachlands	987							
	West End	352							
	Tarcoola Beach	893							
	Mahomets Flats	574							
	Mount Tarcoola	2,217							
	Rudds Gully	126							
	Wandina	2,888							
	Karoo	94							
	Narngulu	273							
	Rangeway	1,309							
	Utakarra	972							
Wonthella	1,119								
	Total	20213				Total	20709	2958	0.23%
		26,564	9				26099		



Map produced by the City of Greater Geraldton
 W: www.cgg.wa.gov.au E: council@cgg.wa.gov.au

Proposed Wards - Option 8B

Scale: NOT TO SCALE

Date	23-Aug-18
Department	GIS [Engineering - GIS]
Drawing No.	Option 8B
Operator	RJT
Paper Size	A3

Disclaimer: Whilst all care has been taken in the preparation of this data, this information is provided as a guide only and no responsibility shall be taken for any omissions or errors in this documentation. The accuracy provided is not to be used for legal purposes, but reference made to original documentation, which includes Certificate of Titles, Survey Diagrams and legal versions of the Town Planning Schemes.

Option 8C - two wards, one City, one Rural, 10 councillors

Target ratio of electors per councillor 2656

Ward	Locality	Electors	Councillors	Ratio	% ratio deviation
Country	Bootenal	28	2	3175	19.53%
	Bringoo	28			
	Burma Road	0			
	Cape Burney	347			
	Deepdale	606			
	Ellendale	8			
	Eradu	11			
	Eradu South	14			
	Georgina	53			
	Greenough	196			
	Kojarena	18			
	Meru	24			
	Minnenooka	28			
	Moonyooka	170			
	Moresby	603			
	Mount Hill	28			
	Northern Gully	11			
	Sandsprings	6			
	South Greenough	69			
	Strathalbyn	853			
	Tibradden	3			
	Waggrakine	1,646			
	Walkaway	187			
	Wicherina	7			
	Wicherina South	0			
	Wooree	930			
	Ambania	8			
	Devils Creek	21			
	Mullewa	310			
	Nunierra	8			
Pindar	21				
Tardun	24				
Tenindewa	41				
West Causuarinas	21				

Using 2018 WAEC figures (see covering report)

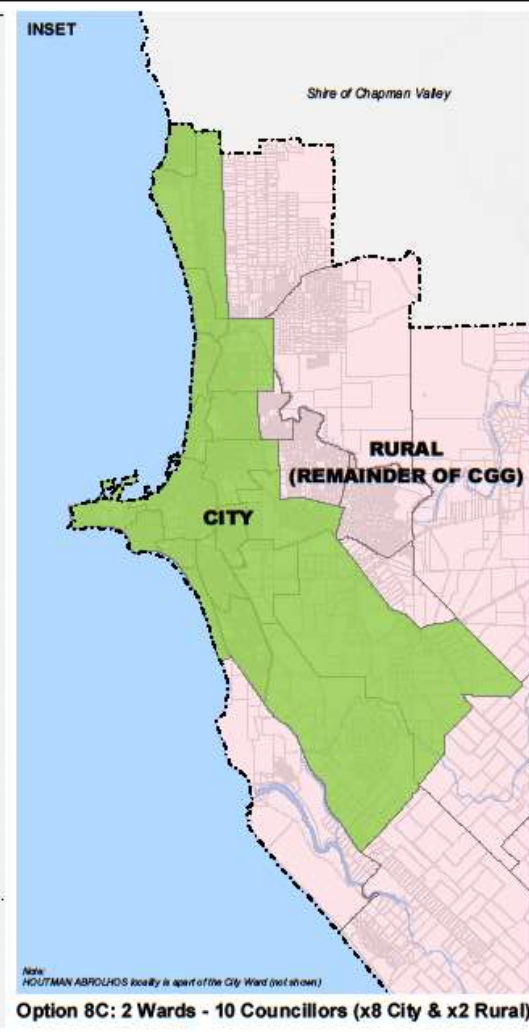
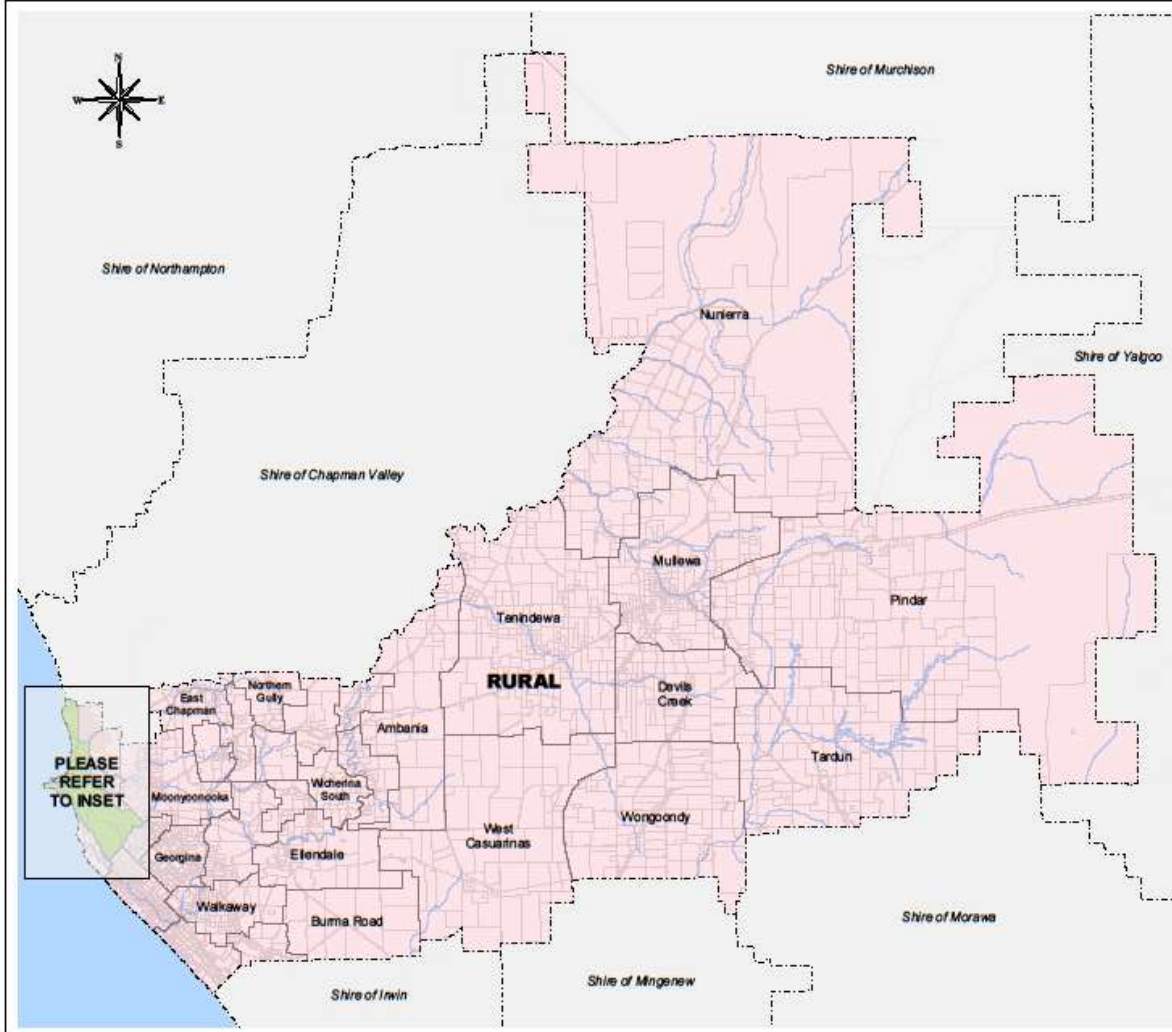
Target ratio of electors per councillor 2610

Ratio	% ratio deviation
2695	-1.45%

Option 8C - two wards, one City, one Rural, 10 councillors

Using 2018 WAEC figures (see covering report)

	Wongoondy	21						
	Total	6351				Total	5390	
City ward	Beresford	1,028	8	2527	-4.88%			
	Spalding	1,439						
	Webborton	132						
	Geraldton	2,183						
	Bluff Point	933						
	Drummond Cove	1,024						
	Glenfield	651						
	Houtman Abrolhos	4						
	Sunset Beach	1,017						
	Beachlands	987						
	West End	352						
	Tarcoola Beach	893						
	Mahomets Flats	574						
	Mount Tarcoola	2,217						
	Rudds Gully	126						
	Wandina	2,888						
	Karloo	94						
	Narngulu	273						
	Rangeway	1,309						
	Utakarra	972						
Wonthella	1,119							
	Total	20213				Total	20709	2589 -2.55%
		26,564	10				26099	



Map produced by the City of Greater Geraldton
 W: www.cgg.wa.gov.au E: council@cgg.wa.gov.au

Proposed Wards - Option 8C

Scale: NOT TO SCALE

Date	23-Aug-18
Department	GIS [Engineering - GIS]
Drawing No.	Option 8C
Operator	RJT
Paper Size	A3

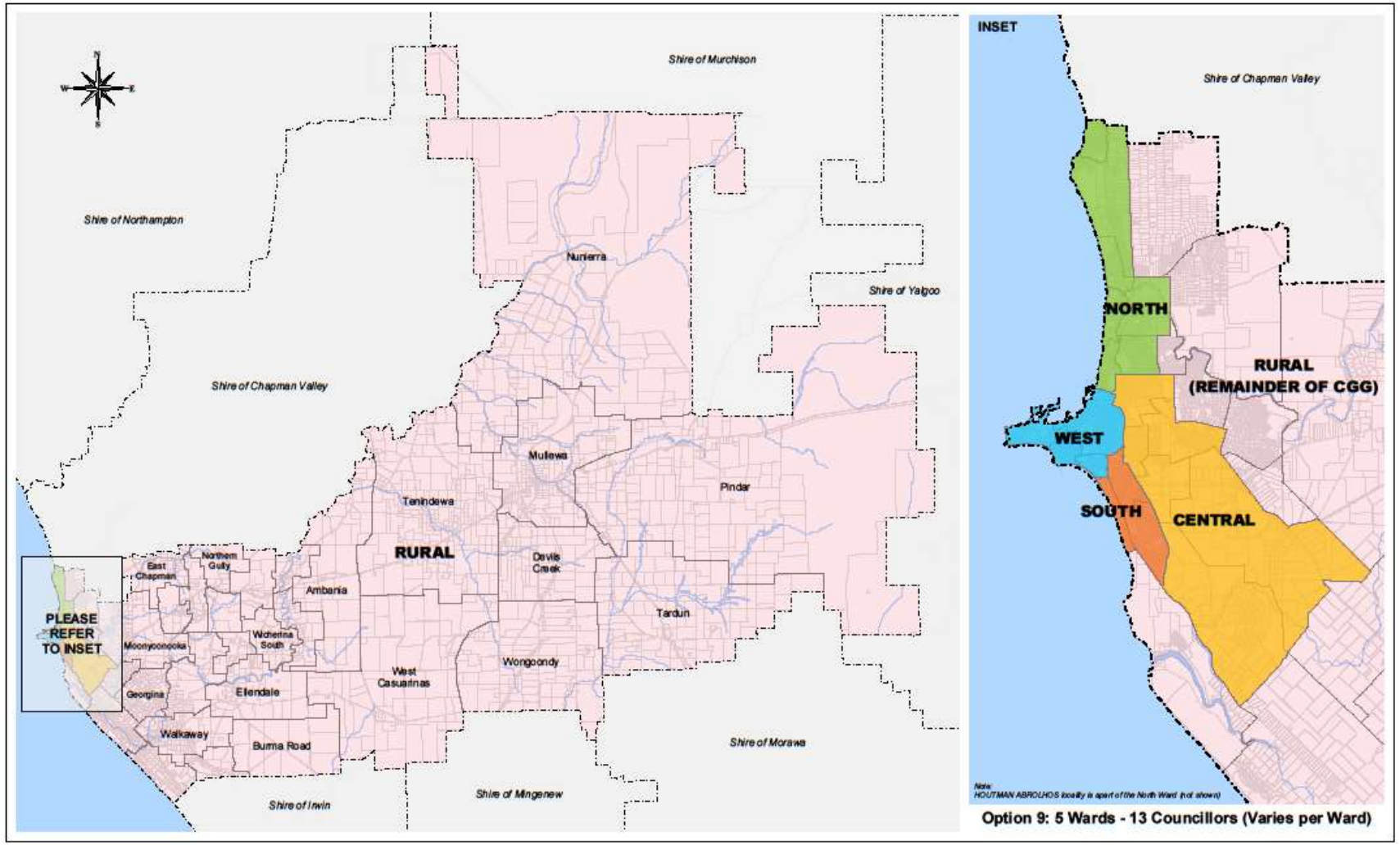
Disclaimer: Whilst all care has been taken in the preparation of this data, this information is provided as a guide only and no responsibility shall be taken for any omissions or errors in this documentation. The accuracy provided is not to be used for legal purposes, but reference made to original documentation, which includes Certificate of Titles, Survey Diagrams and legal versions of the Town Planning Schemes.

Option 9 - group UtaKarra, Karloo, Rangeway and Wonthella together (13 councillors)

Target ratio of electors per councillor 2043

Ward	Locality	Electors	Councillors	Ratio	% ratio deviation
North ward	Drummond Cove	1024	3	2076	1.59%
	Glenfield	651			
	Houtman Abrolhos	4			
	Sunset Beach	1017			
	Bluff Point	933			
	Spalding	1439			
	Beresford	1028			
	Webborton	132			
	Total	6228			
Central ward	Karloo	94	2	1946	-4.77%
	Rangeway	1309			
	UtaKarra	972			
	Wonthella	1119			
	Rudds Gully	126			
	Narngulu	273			
	Total	3892			
West ward	Geraldton	2183	2	2048	0.23%
	Beachlands	987			
	West End	352			
	Mahomets Flats	574			
	Total	4096			
South ward	Mount Tarcoola	2217	3	1999	-2.16%
	Tarcoola Beach	893			
	Wandina	2888			
	Total	5998			
Rural ward	Bootenal	28	3	2117	3.60%
	Bringo	28			
	Burma Road	0			
	Cape Burney	347			
	Deepdale	606			
	Ellendale	8			
	Eradu	11			
	Eradu South	14			
	Georgina	53			
	Greenough	196			
	Kojarena	18			
	Meru	24			

	Minnenooka	28			
	Moonyoonoka	170			
	Moresby	603			
	Mount Hill	28			
	Northern Gully	11			
	Sandsprings	6			
	South Greenough	69			
	Strathalbyn	853			
	Tibradden	3			
	Waggrakine	1646			
	Walkaway	187			
	Wicherina	7			
	Wicherina South	0			
	Wooree	930			
	Ambania	8			
	Devils Creek	21			
	Mullewa	310			
	Nunierra	8			
	Pindar	21			
	Tardun	24			
	Tenindewa	41			
	West Causuarinas	21			
	Wongoondy	21			
	Total	6351			
	Total electors	26,564	13		



Option 9: 5 Wards - 13 Councillors (Varies per Ward)



Map produced by the City of Greater Geraldton
 W: www.cgg.wa.gov.au E: council@cgg.wa.gov.au

Proposed Wards - Option 9

Scale: NOT TO SCALE

Date	23-Aug-18
Department	IS [Engineering - GIS]
Drawing No.	Option 9
Operator	RJT
Paper Size	A3

Disclaimer: Whilst all care has been taken in the preparation of this data, this information is provided as a guide only and no responsibility shall be taken for any omissions or errors in this documentation. The accuracy provided is not to be used for legal purposes, but reference made to original documentation, which includes Certificate of Titles, Survey Diagrams and legal versions of the Town Planning Schemes.

Cross check of electors and ratios using Electors ex WAEC Sept 2018

Notes:

1. WAEC missing Houtman Abrolhos; but include East Chapman (net difference 19 electors)
2. WAEC Sept 2018 electors: 26240
 2016 electors: 26564
 Difference: -324
3. WAEC wards don't appear to fully match City's current. No matter if changing...

Summary

Option 2 - 4 wards, 8 councillors, 2 councillors per ward

Target ratio of electors per councillor 3280

Ward	Electors	Councillors	Ratio of electors per councillor	% ratio deviation
North	6474	2	3237	-1.31%
Central	6848	2	3424	4.39%
South	6197	2	3099	-5.53%
East	6721	2	3361	2.45%
Totals	26240	8	3280	

Option 2 - breakdown by locality

Current ward	Locality	SA1	Number of Electors	Ward	Ward totals
Champion Bay	Beresford	5121001	345	Central	
Champion Bay	Beresford	5121014	26	Central	
Champion Bay	Beresford	5121032	315	Central	
Champion Bay	Beresford	5121033	373	Central	
Champion Bay	Geraldton	5121002	2	Central	
Champion Bay	Geraldton	5121007	121	Central	
Champion Bay	Geraldton	5121018	44	Central	
Champion Bay	Geraldton	5121020	252	Central	
Champion Bay	Webborton	5121031	94	Central	
Champion Bay	Wonthella	5121002	206	Central	
Hills	Strathalbyn	5121108	366	Central	
Hills	Strathalbyn	5121110	182	Central	
Hills	Strathalbyn	5121113	313	Central	

Hills	Webborton	5121031	12	Central	
Port	Beachlands	5121008	261	Central	
Port	Beachlands	5121009	181	Central	
Port	Beachlands	5121010	283	Central	
Port	Beachlands	5121011	281	Central	
Port	Geraldton	5121007	212	Central	
Port	Geraldton	5121011	4	Central	
Port	Geraldton	5121015	177	Central	
Port	Geraldton	5121016	145	Central	
Port	Geraldton	5121017	260	Central	
Port	Geraldton	5121018	285	Central	
Port	Geraldton	5121019	314	Central	
Port	Geraldton	5121020	2	Central	
Port	Geraldton	5121021	335	Central	
Port	West End	5121017	55	Central	
Port	West End	5121022	344	Central	
Willcock	Wonthella	5121003	212	Central	
Willcock	Wonthella	5121004	370	Central	
Willcock	Wonthella	5121005	180	Central	
Willcock	Wonthella	5121006	291	Central	
Willcock	Wonthella	5121023	4	Central	
Willcock	Wonthella	5121024	1	Central	6848
Hills	Bootenal	5121711	25	East	
Hills	Bringoo	5121710	28	East	
Hills	Burma Road	5121710	4	East	
Hills	Cape Burney	5121306	399	East	
Hills	Deepdale	5121101	619	East	
Hills	East Chapman	5121710	23	East	
Hills	Ellendale	5121710	11	East	
Hills	Eradu	5121710	12	East	
Hills	Eradu South	5121710	8	East	
Hills	Georgina	5121711	41	East	
Hills	Greenough	5121712	199	East	
Hills	Kojarena	5121710	26	East	
Hills	Meru	5121118	30	East	
Hills	Minnenooka	5121710	37	East	
Hills	Moonyoonooka	5121101	30	East	
Hills	Moonyoonooka	5121711	138	East	
Hills	Moresby	5121211	301	East	
Hills	Moresby	5121212	343	East	
Hills	Mt Hill	5121713	21	East	
Hills	Narngulu	5121118	36	East	
Hills	Northern Gully	5121710	12	East	
Hills	Rudds Gully	5121118	111	East	
Hills	Sandsprings	5121710	5	East	
Hills	South Greenough	5121712	75	East	

Hills	Tibradden	5121710	3	East	
Hills	Utakarra	5121102	50	East	
Hills	Walkaway	5121713	173	East	
Hills	Wicherina	5121710	2	East	
Hills	Woorree	5121102	1	East	
Hills	Woorree	5121114	359	East	
Hills	Woorree	5121115	349	East	
Hills	Woorree	5121116	271	East	
Mullewa	Ambania	5121722	11	East	
Mullewa	Devils Creek	5121722	13	East	
Mullewa	Mullewa	5121720	196	East	
Mullewa	Mullewa	5121721	18	East	
Mullewa	Nunierra	5121721	13	East	
Mullewa	Pindar	5121721	21	East	
Mullewa	Tardun	5121722	15	East	
Mullewa	Tenindewa	5121722	27	East	
Mullewa	West Casuarinas	5121722	19	East	
Mullewa	Wongoondy	5121722	24	East	
Tarcoola	Rudds Gully	5121118	10	East	
Willcock	Karloo	5121105	356	East	
Willcock	Karloo	5121118	7	East	
Willcock	Narngulu	5121118	6	East	
Willcock	Rangeway	5121106	179	East	
Willcock	Rangeway	5121107	181	East	
Willcock	Rangeway	5121109	302	East	
Willcock	Rangeway	5121111	223	East	
Willcock	Rangeway	5121112	187	East	
Willcock	Rangeway	5121117	266	East	
Willcock	Utakarra	5121102	438	East	
Willcock	Utakarra	5121103	138	East	
Willcock	Utakarra	5121104	329	East	6721
Champion Bay	Spalding	5121025	258	North	
Champion Bay	Spalding	5121026	249	North	
Champion Bay	Spalding	5121027	276	North	
Champion Bay	Spalding	5121028	199	North	
Champion Bay	Spalding	5121029	212	North	
Champion Bay	Spalding	5121030	255	North	
Chapman	Bluff Point	5121012	155	North	
Chapman	Bluff Point	5121013	416	North	
Chapman	Bluff Point	5121014	382	North	
Chapman	Drummond Cove	5121201	331	North	
Chapman	Drummond Cove	5121202	269	North	
Chapman	Drummond Cove	5121203	385	North	
Chapman	Glenfield	5121205	124	North	
Chapman	Glenfield	5121215	110	North	
Chapman	Glenfield	5121218	248	North	

Chapman	Sunset Beach	5121204	272	North	
Chapman	Sunset Beach	5121206	484	North	
Chapman	Sunset Beach	5121216	249	North	
Chapman	Waggrakine	5121207	257	North	
Chapman	Waggrakine	5121208	405	North	
Chapman	Waggrakine	5121209	245	North	
Chapman	Waggrakine	5121210	265	North	
Hills	Glenfield	5121215	24	North	
Hills	Waggrakine	5121207	2	North	
Hills	Waggrakine	5121213	231	North	
Hills	Waggrakine	5121214	171	North	6474
Port	Mahomets Flats	5121305	204	South	
Port	Mahomets Flats	5121310	283	South	
Port	Tarcoola Beach	5121304	247	South	
Tarcoola	Mahomets Flats	5121305	86	South	
Tarcoola	Mt Tarcoola	5121307	223	South	
Tarcoola	Mt Tarcoola	5121308	385	South	
Tarcoola	Mt Tarcoola	5121309	279	South	
Tarcoola	Mt Tarcoola	5121311	318	South	
Tarcoola	Mt Tarcoola	5121312	308	South	
Tarcoola	Mt Tarcoola	5121313	354	South	
Tarcoola	Mt Tarcoola	5121314	173	South	
Tarcoola	Tarcoola Beach	5121302	348	South	
Tarcoola	Tarcoola Beach	5121303	386	South	
Tarcoola	Wandina	5121301	329	South	
Tarcoola	Wandina	5121315	334	South	
Tarcoola	Wandina	5121316	777	South	
Tarcoola	Wandina	5121317	210	South	
Tarcoola	Wandina	5121318	304	South	
Tarcoola	Wandina	5121319	372	South	
Tarcoola	Wandina	5121320	277	South	6197

26240

26240

Option 6 - Mullewa ward (1 councillor, North/Hills ward (3 councillors), 4 other wards with 2 councillors each

Target ratio of electors per councillor 2187

Ward	Electors	Councillors	Ratio of electors per councillor	% ratio deviation
Central	4526	2	2263	3.49%
Mullewa	2032	1	2032	-7.07%
North Central	4724	2	2362	8.02%
North/ Hills	6651	3	2217	1.39%
South	3993	2	1997	-8.70%
South Central	4314	2	2157	-1.36%
Totals	26240	12	2187	

NOTE:

There appears to have been a decline in electors in the proposed Mullewa ward from 2016 to Sept 2018. In order to bring the ratio of electors to councillors to within the allowable ratio deviation from the average, the locality of Rudds Gully has been moved from the proposed South ward to the proposed Mullewa ward, and some 296 electors of the locality of Wonthella moved from the proposed Central ward to North Central ward

Option 6 - breakdown by locality

Current ward	Locality	SA1	Number of Electors	Ward	Ward totals
Champion Bay	Geraldton	5121002	2	Central	
Champion Bay	Geraldton	5121007	121	Central	
Champion Bay	Geraldton	5121018	44	Central	
Champion Bay	Geraldton	5121020	252	Central	
Champion Bay	Wonthella	5121002	206	Central	
Port	Beachlands	5121008	261	Central	
Port	Beachlands	5121009	181	Central	
Port	Beachlands	5121010	283	Central	
Port	Beachlands	5121011	281	Central	
Port	Geraldton	5121007	212	Central	
Port	Geraldton	5121011	4	Central	
Port	Geraldton	5121015	177	Central	
Port	Geraldton	5121016	145	Central	

Port	Geraldton	5121017	260	Central	
Port	Geraldton	5121018	285	Central	
Port	Geraldton	5121019	314	Central	
Port	Geraldton	5121020	2	Central	
Port	Geraldton	5121021	335	Central	
Port	West End	5121017	55	Central	
Port	West End	5121022	344	Central	
Willcock	Wonthella	5121003	212	Central	
Willcock	Wonthella	5121004	370	Central	
Willcock	Wonthella	5121005	180	Central	4526
Hills	Bootenal	5121711	25	Mullewa	
Hills	Bringoo	5121710	28	Mullewa	
Hills	Burma Road	5121710	4	Mullewa	
Hills	Deepdale	5121101	619	Mullewa	
Hills	East Chapman	5121710	23	Mullewa	
Hills	Ellendale	5121710	11	Mullewa	
Hills	Georgina	5121711	41	Mullewa	
Hills	Greenough	5121712	199	Mullewa	
Hills	Kojarena	5121710	26	Mullewa	
Hills	Meru	5121118	30	Mullewa	
Hills	Minnenooka	5121710	37	Mullewa	
Hills	Moonyoonooka	5121101	30	Mullewa	
Hills	Moonyoonooka	5121711	138	Mullewa	
Hills	Mt Hill	5121713	21	Mullewa	
Hills	Narngulu	5121118	36	Mullewa	
Hills	Northern Gully	5121710	12	Mullewa	
Hills	Sandsprings	5121710	5	Mullewa	
Hills	South Greenough	5121712	75	Mullewa	
Hills	Tibradden	5121710	3	Mullewa	
Hills	Walkaway	5121713	173	Mullewa	
Hills	Wicherina	5121710	2	Mullewa	
Mullewa	Ambania	5121722	11	Mullewa	
Mullewa	Devils Creek	5121722	13	Mullewa	
Mullewa	Mullewa	5121720	196	Mullewa	
Mullewa	Mullewa	5121721	18	Mullewa	
Mullewa	Nunierra	5121721	13	Mullewa	
Mullewa	Pindar	5121721	21	Mullewa	
Mullewa	Tardun	5121722	15	Mullewa	
Mullewa	Tenindewa	5121722	27	Mullewa	
Mullewa	West Casuarinas	5121722	19	Mullewa	
Mullewa	Wongoondy	5121722	24	Mullewa	
Willcock	Narngulu	5121118	6	Mullewa	
Hills	Eradu	5121710	12	Mullewa	
Hills	Eradu South	5121710	8	Mullewa	
Hills	Rudds Gully	5121118	111	Mullewa	2032
Willcock	Wonthella	5121006	291	North Central	

Willcock	Wonthella	5121023	4	North Central	
Willcock	Wonthella	5121024	1	North Central	
Champion Bay	Beresford	5121001	345	North Central	
Champion Bay	Beresford	5121014	26	North Central	
Champion Bay	Beresford	5121032	315	North Central	
Champion Bay	Beresford	5121033	373	North Central	
Champion Bay	Webborton	5121031	94	North Central	
Hills	Strathalbyn	5121108	366	North Central	
Hills	Strathalbyn	5121110	182	North Central	
Hills	Strathalbyn	5121113	313	North Central	
Hills	Webborton	5121031	12	North Central	
Champion Bay	Spalding	5121025	258	North Central	
Champion Bay	Spalding	5121026	249	North Central	
Champion Bay	Spalding	5121027	276	North Central	
Champion Bay	Spalding	5121028	199	North Central	
Champion Bay	Spalding	5121029	212	North Central	
Champion Bay	Spalding	5121030	255	North Central	
Chapman	Bluff Point	5121012	155	North Central	
Chapman	Bluff Point	5121013	416	North Central	
Chapman	Bluff Point	5121014	382	North Cent	4724
Hills	Moresby	5121211	301	North/ Hills	
Hills	Moresby	5121212	343	North/ Hills	
Hills	Utakarra	5121102	50	North/ Hills	
Hills	Woorree	5121102	1	North/ Hills	
Hills	Woorree	5121114	359	North/ Hills	
Hills	Woorree	5121115	349	North/ Hills	
Hills	Woorree	5121116	271	North/ Hills	
Willcock	Utakarra	5121102	438	North/ Hills	
Willcock	Utakarra	5121103	138	North/ Hills	
Willcock	Utakarra	5121104	329	North/ Hills	
Chapman	Drummond Cove	5121201	331	North/ Hills	
Chapman	Drummond Cove	5121202	269	North/ Hills	
Chapman	Drummond Cove	5121203	385	North/ Hills	
Chapman	Glenfield	5121205	124	North/ Hills	
Chapman	Glenfield	5121215	110	North/ Hills	
Chapman	Glenfield	5121218	248	North/ Hills	
Chapman	Sunset Beach	5121204	272	North/ Hills	
Chapman	Sunset Beach	5121206	484	North/ Hills	
Chapman	Sunset Beach	5121216	249	North/ Hills	
Chapman	Waggrakine	5121207	257	North/ Hills	
Chapman	Waggrakine	5121208	405	North/ Hills	
Chapman	Waggrakine	5121209	245	North/ Hills	
Chapman	Waggrakine	5121210	265	North/ Hills	
Hills	Glenfield	5121215	24	North/ Hills	
Hills	Waggrakine	5121207	2	North/ Hills	
Hills	Waggrakine	5121213	231	North/ Hills	

Hills	Waggrakine	5121214	171	North/ Hills	6651
Hills	Cape Burney	5121306	399	South	
Tarcoola	Rudds Gully	5121118	10	South	
Port	Tarcoola Beach	5121304	247	South	
Tarcoola	Tarcoola Beach	5121302	348	South	
Tarcoola	Tarcoola Beach	5121303	386	South	
Tarcoola	Wandina	5121301	329	South	
Tarcoola	Wandina	5121315	334	South	
Tarcoola	Wandina	5121316	777	South	
Tarcoola	Wandina	5121317	210	South	
Tarcoola	Wandina	5121318	304	South	
Tarcoola	Wandina	5121319	372	South	
Tarcoola	Wandina	5121320	277	South	3993
Willcock	Karoo	5121105	356	South Central	
Willcock	Karoo	5121118	7	South Central	
Willcock	Rangeway	5121106	179	South Central	
Willcock	Rangeway	5121107	181	South Central	
Willcock	Rangeway	5121109	302	South Central	
Willcock	Rangeway	5121111	223	South Central	
Willcock	Rangeway	5121112	187	South Central	
Willcock	Rangeway	5121117	266	South Central	
Port	Mahomets Flats	5121305	204	South Central	
Port	Mahomets Flats	5121310	283	South Central	
Tarcoola	Mahomets Flats	5121305	86	South Central	
Tarcoola	Mt Tarcoola	5121307	223	South Central	
Tarcoola	Mt Tarcoola	5121308	385	South Central	
Tarcoola	Mt Tarcoola	5121309	279	South Central	
Tarcoola	Mt Tarcoola	5121311	318	South Central	
Tarcoola	Mt Tarcoola	5121312	308	South Central	
Tarcoola	Mt Tarcoola	5121313	354	South Central	
Tarcoola	Mt Tarcoola	5121314	173	South Cent	4314

26240

26240

Option 8B - Two wards - Rural and City; 9 councillors

Target ratio of electors per councillor 2916

Ward	Electors	Councillors	Ratio of electors per councillor	% ratio deviation
City	19865	7	2838	-2.66%
Rural	6375	2	3188	9.33%
Totals	26240	9	6025	

Option 8C - Two wards - Rural and City; 10 councillors

NO LONGER WORKS

Target ratio of electors per councillor 2624

Ward	Electors	Councillors	Ratio of electors per councillor	% ratio deviation
City	19865	8	2483	-5.37%
Rural	6375	2	3188	21.47%
Totals	26240	10		

Option 8B - breakdown by locality

Current ward	Locality	SA1	Number of Electors	Ward	Ward totals
Champion Bay	Geraldton	5121002	2	City	
Champion Bay	Geraldton	5121007	121	City	
Champion Bay	Geraldton	5121018	44	City	
Champion Bay	Geraldton	5121020	252	City	
Champion Bay	Wonthella	5121002	206	City	
Port	Beachlands	5121008	261	City	
Port	Beachlands	5121009	181	City	
Port	Beachlands	5121010	283	City	
Port	Beachlands	5121011	281	City	
Port	Geraldton	5121007	212	City	
Port	Geraldton	5121011	4	City	
Port	Geraldton	5121015	177	City	
Port	Geraldton	5121016	145	City	

Port	Geraldton	5121017	260	City	
Port	Geraldton	5121018	285	City	
Port	Geraldton	5121019	314	City	
Port	Geraldton	5121020	2	City	
Port	Geraldton	5121021	335	City	
Port	West End	5121017	55	City	
Port	West End	5121022	344	City	
Willcock	Wonthella	5121003	212	City	
Willcock	Wonthella	5121004	370	City	
Willcock	Wonthella	5121005	180	City	
Willcock	Wonthella	5121006	291	City	
Willcock	Wonthella	5121023	4	City	
Willcock	Wonthella	5121024	1	City	
Willcock	Narngulu	5121118	6	City	
Champion Bay	Beresford	5121001	345	City	
Champion Bay	Beresford	5121014	26	City	
Champion Bay	Beresford	5121032	315	City	
Champion Bay	Beresford	5121033	373	City	
Champion Bay	Webborton	5121031	94	City	
Hills	Webborton	5121031	12	City	
Champion Bay	Spalding	5121025	258	City	
Champion Bay	Spalding	5121026	249	City	
Champion Bay	Spalding	5121027	276	City	
Champion Bay	Spalding	5121028	199	City	
Champion Bay	Spalding	5121029	212	City	
Champion Bay	Spalding	5121030	255	City	
Chapman	Bluff Point	5121012	155	City	
Chapman	Bluff Point	5121013	416	City	
Chapman	Bluff Point	5121014	382	City	
Hills	Utakarra	5121102	50	City	
Willcock	Utakarra	5121102	438	City	
Willcock	Utakarra	5121103	138	City	
Willcock	Utakarra	5121104	329	City	
Chapman	Drummond Cove	5121201	331	City	
Chapman	Drummond Cove	5121202	269	City	
Chapman	Drummond Cove	5121203	385	City	
Chapman	Glenfield	5121205	124	City	
Chapman	Glenfield	5121215	110	City	
Chapman	Glenfield	5121218	248	City	
Chapman	Sunset Beach	5121204	272	City	
Chapman	Sunset Beach	5121206	484	City	
Chapman	Sunset Beach	5121216	249	City	
Hills	Glenfield	5121215	24	City	
Hills	Rudds Gully	5121118	111	City	
Tarcoola	Rudds Gully	5121118	10	City	
Port	Tarcoola Beach	5121304	247	City	

Tarcoola	Tarcoola Beach	5121302	348	City	
Tarcoola	Tarcoola Beach	5121303	386	City	
Tarcoola	Wandina	5121301	329	City	
Tarcoola	Wandina	5121315	334	City	
Tarcoola	Wandina	5121316	777	City	
Tarcoola	Wandina	5121317	210	City	
Tarcoola	Wandina	5121318	304	City	
Tarcoola	Wandina	5121319	372	City	
Tarcoola	Wandina	5121320	277	City	
Willcock	Karloo	5121105	356	City	
Willcock	Karloo	5121118	7	City	
Willcock	Rangeway	5121106	179	City	
Willcock	Rangeway	5121107	181	City	
Willcock	Rangeway	5121109	302	City	
Willcock	Rangeway	5121111	223	City	
Willcock	Rangeway	5121112	187	City	
Willcock	Rangeway	5121117	266	City	
Port	Mahomets Flats	5121305	204	City	
Port	Mahomets Flats	5121310	283	City	
Tarcoola	Mahomets Flats	5121305	86	City	
Tarcoola	Mt Tarcoola	5121307	223	City	
Tarcoola	Mt Tarcoola	5121308	385	City	
Tarcoola	Mt Tarcoola	5121309	279	City	
Tarcoola	Mt Tarcoola	5121311	318	City	
Tarcoola	Mt Tarcoola	5121312	308	City	
Tarcoola	Mt Tarcoola	5121313	354	City	
Tarcoola	Mt Tarcoola	5121314	173	City	19865
Hills	Bootenal	5121711	25	Rural	
Hills	Bringoo	5121710	28	Rural	
Hills	Burma Road	5121710	4	Rural	
Hills	Deepdale	5121101	619	Rural	
Hills	East Chapman	5121710	23	Rural	
Hills	Ellendale	5121710	11	Rural	
Hills	Eradu	5121710	12	Rural	
Hills	Eradu South	5121710	8	Rural	
Hills	Georgina	5121711	41	Rural	
Hills	Greenough	5121712	199	Rural	
Hills	Kojarena	5121710	26	Rural	
Hills	Meru	5121118	30	Rural	
Hills	Minnenooka	5121710	37	Rural	
Hills	Moonyoonooka	5121101	30	Rural	
Hills	Moonyoonooka	5121711	138	Rural	
Hills	Mt Hill	5121713	21	Rural	
Hills	Narngulu	5121118	36	Rural	
Hills	Northern Gully	5121710	12	Rural	
Hills	Sandsprings	5121710	5	Rural	

Hills	South Greenough	5121712	75	Rural	
Hills	Tibradden	5121710	3	Rural	
Hills	Walkaway	5121713	173	Rural	
Hills	Wicherina	5121710	2	Rural	
Mullewa	Ambania	5121722	11	Rural	
Mullewa	Devils Creek	5121722	13	Rural	
Mullewa	Mullewa	5121720	196	Rural	
Mullewa	Mullewa	5121721	18	Rural	
Mullewa	Nunierra	5121721	13	Rural	
Mullewa	Pindar	5121721	21	Rural	
Mullewa	Tardun	5121722	15	Rural	
Mullewa	Tenindewa	5121722	27	Rural	
Mullewa	West Casuarinas	5121722	19	Rural	
Mullewa	Wongoondy	5121722	24	Rural	
Hills	Strathalbyn	5121108	366	Rural	
Hills	Strathalbyn	5121110	182	Rural	
Hills	Strathalbyn	5121113	313	Rural	
Hills	Moresby	5121211	301	Rural	
Hills	Moresby	5121212	343	Rural	
Hills	Woorree	5121102	1	Rural	
Hills	Woorree	5121114	359	Rural	
Hills	Woorree	5121115	349	Rural	
Hills	Woorree	5121116	271	Rural	
Chapman	Waggrakine	5121207	257	Rural	
Chapman	Waggrakine	5121208	405	Rural	
Chapman	Waggrakine	5121209	245	Rural	
Chapman	Waggrakine	5121210	265	Rural	
Hills	Waggrakine	5121207	2	Rural	
Hills	Waggrakine	5121213	231	Rural	
Hills	Waggrakine	5121214	171	Rural	
Hills	Cape Burney	5121306	399	Rural	6375

26240

26240

Option 9 - 5 wards, 13 councillors (number of councillors varies by ward)

Target ratio of electors per councillor			2018	
Ward	Electors	Councillors	Ratio of electors per councillor	% ratio deviation
North	6063	3	2021	0.13%
Central	4083	2	2042	1.14%
West	4131	2	2066	2.33%
South	5624	3	1875	-7.12%
Rural	6339	3	2113	4.68%
Totals	26240	13	2018	

Option 9 - breakdown by locality

Current ward	Locality	SA1	Number of Electors	Ward	Ward totals
Champion Bay	Wonthella	5121002	206	Central	
Willcock	Wonthella	5121003	212	Central	
Willcock	Wonthella	5121004	370	Central	
Willcock	Wonthella	5121005	180	Central	
Willcock	Wonthella	5121006	291	Central	
Willcock	Wonthella	5121023	4	Central	
Willcock	Wonthella	5121024	1	Central	
Hills	Narngulu	5121118	36	Central	
Hills	Rudds Gully	5121118	111	Central	
Hills	Utakarra	5121102	50	Central	
Tarcoola	Rudds Gully	5121118	10	Central	
Willcock	Karloo	5121105	356	Central	
Willcock	Karloo	5121118	7	Central	

Willcock	Narngulu	5121118	6	Central	
Willcock	Rangeway	5121106	179	Central	
Willcock	Rangeway	5121107	181	Central	
Willcock	Rangeway	5121109	302	Central	
Willcock	Rangeway	5121111	223	Central	
Willcock	Rangeway	5121112	187	Central	
Willcock	Rangeway	5121117	266	Central	
Willcock	Utakarra	5121102	438	Central	
Willcock	Utakarra	5121103	138	Central	
Willcock	Utakarra	5121104	329	Central	4083
Champion Bay	Beresford	5121001	345	North	
Champion Bay	Beresford	5121014	26	North	
Champion Bay	Beresford	5121032	315	North	
Champion Bay	Beresford	5121033	373	North	
Champion Bay	Webborton	5121031	94	North	
Hills	Webborton	5121031	12	North	
Champion Bay	Spalding	5121025	258	North	
Champion Bay	Spalding	5121026	249	North	
Champion Bay	Spalding	5121027	276	North	
Champion Bay	Spalding	5121028	199	North	
Champion Bay	Spalding	5121029	212	North	
Champion Bay	Spalding	5121030	255	North	
Chapman	Bluff Point	5121012	155	North	
Chapman	Bluff Point	5121013	416	North	
Chapman	Bluff Point	5121014	382	North	
Chapman	Drummond Cove	5121201	331	North	
Chapman	Drummond Cove	5121202	269	North	
Chapman	Drummond Cove	5121203	385	North	
Chapman	Glenfield	5121205	124	North	
Chapman	Glenfield	5121215	110	North	
Chapman	Glenfield	5121218	248	North	
Chapman	Sunset Beach	5121204	272	North	
Chapman	Sunset Beach	5121206	484	North	
Chapman	Sunset Beach	5121216	249	North	
Hills	Glenfield	5121215	24	North	6063
Hills	Strathalbyn	5121108	366	Rural	
Hills	Strathalbyn	5121110	182	Rural	
Hills	Strathalbyn	5121113	313	Rural	
Hills	Bootenal	5121711	25	Rural	
Hills	Bringoo	5121710	28	Rural	
Hills	Burma Road	5121710	4	Rural	
Hills	Cape Burney	5121306	399	Rural	
Hills	Deepdale	5121101	619	Rural	
Hills	East Chapman	5121710	23	Rural	
Hills	Ellendale	5121710	11	Rural	
Hills	Eradu	5121710	12	Rural	

Hills	Eradu South	5121710	8	Rural	
Hills	Georgina	5121711	41	Rural	
Hills	Greenough	5121712	199	Rural	
Hills	Kojarena	5121710	26	Rural	
Hills	Meru	5121118	30	Rural	
Hills	Minnenooka	5121710	37	Rural	
Hills	Moonyoonooka	5121101	30	Rural	
Hills	Moonyoonooka	5121711	138	Rural	
Hills	Moresby	5121211	301	Rural	
Hills	Moresby	5121212	343	Rural	
Hills	Mt Hill	5121713	21	Rural	
Hills	Northern Gully	5121710	12	Rural	
Hills	Sandsprings	5121710	5	Rural	
Hills	South Greenough	5121712	75	Rural	
Hills	Tibradden	5121710	3	Rural	
Hills	Walkaway	5121713	173	Rural	
Hills	Wicherina	5121710	2	Rural	
Hills	Woorree	5121102	1	Rural	
Hills	Woorree	5121114	359	Rural	
Hills	Woorree	5121115	349	Rural	
Hills	Woorree	5121116	271	Rural	
Mullewa	Ambania	5121722	11	Rural	
Mullewa	Devils Creek	5121722	13	Rural	
Mullewa	Mullewa	5121720	196	Rural	
Mullewa	Mullewa	5121721	18	Rural	
Mullewa	Nunierra	5121721	13	Rural	
Mullewa	Pindar	5121721	21	Rural	
Mullewa	Tardun	5121722	15	Rural	
Mullewa	Tenindewa	5121722	27	Rural	
Mullewa	West Casuarinas	5121722	19	Rural	
Mullewa	Wongoondy	5121722	24	Rural	
Chapman	Waggrakine	5121207	257	Rural	
Chapman	Waggrakine	5121208	405	Rural	
Chapman	Waggrakine	5121209	245	Rural	
Chapman	Waggrakine	5121210	265	Rural	
Hills	Waggrakine	5121207	2	Rural	
Hills	Waggrakine	5121213	231	Rural	
Hills	Waggrakine	5121214	171	Rural	6339
Port	Tarcoola Beach	5121304	247	South	
Tarcoola	Mt Tarcoola	5121307	223	South	
Tarcoola	Mt Tarcoola	5121308	385	South	
Tarcoola	Mt Tarcoola	5121309	279	South	
Tarcoola	Mt Tarcoola	5121311	318	South	
Tarcoola	Mt Tarcoola	5121312	308	South	
Tarcoola	Mt Tarcoola	5121313	354	South	
Tarcoola	Mt Tarcoola	5121314	173	South	

Tarcoola	Tarcoola Beach	5121302	348	South	
Tarcoola	Tarcoola Beach	5121303	386	South	
Tarcoola	Wandina	5121301	329	South	
Tarcoola	Wandina	5121315	334	South	
Tarcoola	Wandina	5121316	777	South	
Tarcoola	Wandina	5121317	210	South	
Tarcoola	Wandina	5121318	304	South	
Tarcoola	Wandina	5121319	372	South	
Tarcoola	Wandina	5121320	277	South	5624
Champion Bay	Geraldton	5121002	2	West	
Champion Bay	Geraldton	5121007	121	West	
Champion Bay	Geraldton	5121018	44	West	
Champion Bay	Geraldton	5121020	252	West	
Port	Beachlands	5121008	261	West	
Port	Beachlands	5121009	181	West	
Port	Beachlands	5121010	283	West	
Port	Beachlands	5121011	281	West	
Port	Geraldton	5121007	212	West	
Port	Geraldton	5121011	4	West	
Port	Geraldton	5121015	177	West	
Port	Geraldton	5121016	145	West	
Port	Geraldton	5121017	260	West	
Port	Geraldton	5121018	285	West	
Port	Geraldton	5121019	314	West	
Port	Geraldton	5121020	2	West	
Port	Geraldton	5121021	335	West	
Port	West End	5121017	55	West	
Port	West End	5121022	344	West	
Port	Mahomets Flats	5121305	204	West	
Port	Mahomets Flats	5121310	283	West	
Tarcoola	Mahomets Flats	5121305	86	West	4131

26240

26240

**Option 3 in DP used for Community consultation - 12
councillors, 4 wards, 3 councillors per ward**

Target ratio of electors per councillor 2,187

Ward	Electors	Councillors	Ratio of electors per councillor	% ratio deviation
North	6,474	3	2,158	-1.31%
Central	6,848	3	2,283	4.39%
South	6,197	3	2,066	-5.53%
East	6,721	3	2,240	2.45%
Totals	26,240	12	8,747	

Current ward	Locality	SA1	Number of Electors	Ward	Ward totals
Champion Bay	Beresford	5121001	345	Central	
Champion Bay	Beresford	5121014	26	Central	
Champion Bay	Beresford	5121032	315	Central	
Champion Bay	Beresford	5121033	373	Central	
Champion Bay	Geraldton	5121002	2	Central	
Champion Bay	Geraldton	5121007	121	Central	
Champion Bay	Geraldton	5121018	44	Central	
Champion Bay	Geraldton	5121020	252	Central	
Champion Bay	Webborton	5121031	94	Central	
Champion Bay	Wonthella	5121002	206	Central	
Hills	Strathalbyn	5121108	366	Central	
Hills	Strathalbyn	5121110	182	Central	
Hills	Strathalbyn	5121113	313	Central	

Hills	Webborton	5121031	12	Central	
Port	Beachlands	5121008	261	Central	
Port	Beachlands	5121009	181	Central	
Port	Beachlands	5121010	283	Central	
Port	Beachlands	5121011	281	Central	
Port	Geraldton	5121007	212	Central	
Port	Geraldton	5121011	4	Central	
Port	Geraldton	5121015	177	Central	
Port	Geraldton	5121016	145	Central	
Port	Geraldton	5121017	260	Central	
Port	Geraldton	5121018	285	Central	
Port	Geraldton	5121019	314	Central	
Port	Geraldton	5121020	2	Central	
Port	Geraldton	5121021	335	Central	
Port	West End	5121017	55	Central	
Port	West End	5121022	344	Central	
Willcock	Wonthella	5121003	212	Central	
Willcock	Wonthella	5121004	370	Central	
Willcock	Wonthella	5121005	180	Central	
Willcock	Wonthella	5121006	291	Central	
Willcock	Wonthella	5121023	4	Central	
Willcock	Wonthella	5121024	1	Central	6848
Hills	Bootenal	5121711	25	East	
Hills	Bringoo	5121710	28	East	
Hills	Burma Road	5121710	4	East	
Hills	Cape Burney	5121306	399	East	
Hills	Deepdale	5121101	619	East	
Hills	East Chapman	5121710	23	East	
Hills	Ellendale	5121710	11	East	
Hills	Eradu	5121710	12	East	
Hills	Eradu South	5121710	8	East	
Hills	Georgina	5121711	41	East	
Hills	Greenough	5121712	199	East	
Hills	Kojarena	5121710	26	East	
Hills	Meru	5121118	30	East	
Hills	Minnenooka	5121710	37	East	
Hills	Moonyoonooka	5121101	30	East	
Hills	Moonyoonooka	5121711	138	East	
Hills	Moresby	5121211	301	East	
Hills	Moresby	5121212	343	East	
Hills	Mt Hill	5121713	21	East	
Hills	Narngulu	5121118	36	East	
Hills	Northern Gully	5121710	12	East	
Hills	Rudds Gully	5121118	111	East	
Hills	Sandsprings	5121710	5	East	
Hills	South Greenough	5121712	75	East	

Hills	Tibradden	5121710	3	East	
Hills	Utakarra	5121102	50	East	
Hills	Walkaway	5121713	173	East	
Hills	Wicherina	5121710	2	East	
Hills	Woorree	5121102	1	East	
Hills	Woorree	5121114	359	East	
Hills	Woorree	5121115	349	East	
Hills	Woorree	5121116	271	East	
Mullewa	Ambania	5121722	11	East	
Mullewa	Devils Creek	5121722	13	East	
Mullewa	Mullewa	5121720	196	East	
Mullewa	Mullewa	5121721	18	East	
Mullewa	Nunierra	5121721	13	East	
Mullewa	Pindar	5121721	21	East	
Mullewa	Tardun	5121722	15	East	
Mullewa	Tenindewa	5121722	27	East	
Mullewa	West Casuarinas	5121722	19	East	
Mullewa	Wongoondy	5121722	24	East	
Tarcoola	Rudds Gully	5121118	10	East	
Willcock	Karloo	5121105	356	East	
Willcock	Karloo	5121118	7	East	
Willcock	Narngulu	5121118	6	East	
Willcock	Rangeway	5121106	179	East	
Willcock	Rangeway	5121107	181	East	
Willcock	Rangeway	5121109	302	East	
Willcock	Rangeway	5121111	223	East	
Willcock	Rangeway	5121112	187	East	
Willcock	Rangeway	5121117	266	East	
Willcock	Utakarra	5121102	438	East	
Willcock	Utakarra	5121103	138	East	
Willcock	Utakarra	5121104	329	East	6721
Champion Bay	Spalding	5121025	258	North	
Champion Bay	Spalding	5121026	249	North	
Champion Bay	Spalding	5121027	276	North	
Champion Bay	Spalding	5121028	199	North	
Champion Bay	Spalding	5121029	212	North	
Champion Bay	Spalding	5121030	255	North	
Chapman	Bluff Point	5121012	155	North	
Chapman	Bluff Point	5121013	416	North	
Chapman	Bluff Point	5121014	382	North	
Chapman	Drummond Cove	5121201	331	North	
Chapman	Drummond Cove	5121202	269	North	
Chapman	Drummond Cove	5121203	385	North	
Chapman	Glenfield	5121205	124	North	
Chapman	Glenfield	5121215	110	North	
Chapman	Glenfield	5121218	248	North	

Chapman	Sunset Beach	5121204	272	North	
Chapman	Sunset Beach	5121206	484	North	
Chapman	Sunset Beach	5121216	249	North	
Chapman	Waggrakine	5121207	257	North	
Chapman	Waggrakine	5121208	405	North	
Chapman	Waggrakine	5121209	245	North	
Chapman	Waggrakine	5121210	265	North	
Hills	Glenfield	5121215	24	North	
Hills	Waggrakine	5121207	2	North	
Hills	Waggrakine	5121213	231	North	
Hills	Waggrakine	5121214	171	North	6474
Port	Mahomets Flats	5121305	204	South	
Port	Mahomets Flats	5121310	283	South	
Port	Tarcoola Beach	5121304	247	South	
Tarcoola	Mahomets Flats	5121305	86	South	
Tarcoola	Mt Tarcoola	5121307	223	South	
Tarcoola	Mt Tarcoola	5121308	385	South	
Tarcoola	Mt Tarcoola	5121309	279	South	
Tarcoola	Mt Tarcoola	5121311	318	South	
Tarcoola	Mt Tarcoola	5121312	308	South	
Tarcoola	Mt Tarcoola	5121313	354	South	
Tarcoola	Mt Tarcoola	5121314	173	South	
Tarcoola	Tarcoola Beach	5121302	348	South	
Tarcoola	Tarcoola Beach	5121303	386	South	
Tarcoola	Wandina	5121301	329	South	
Tarcoola	Wandina	5121315	334	South	
Tarcoola	Wandina	5121316	777	South	
Tarcoola	Wandina	5121317	210	South	
Tarcoola	Wandina	5121318	304	South	
Tarcoola	Wandina	5121319	372	South	
Tarcoola	Wandina	5121320	277	South	6197

26240

26240

Two wards - Rural and City; 9 - 12 councillors

Uses Sept 2018 WAEC electors

Ratios can be adjusted by amending the numbers of councillor(s) in the cell highlighted yellow

9 Councillors

Target ratio of electors per councillor 2,916

Ward	Electors	Councillors	Ratio of electors per councillor	% ratio deviation
City	19,865	7	2,838	-2.66%
Rural	6,375	2	3,188	9.33%
Totals	26,240	9		

10 councillors

Target ratio of electors per councillor 2,624

Ward	Electors	Councillors	Ratio of electors per councillor	% ratio deviation
City	19,865	8	2,483	-5.37%
Rural	6,375	2	3,188	21.47%
Totals	26,240	10		

10 councillors (Cape Burney and Deepdale in urban ward)

Target ratio of electors per councillor 2,624

Ward	Electors	Councillors	Ratio of electors per councillor	% ratio deviation
City	20,883	8	2,610	-0.52%
Rural	5,357	2	2,679	2.08%
Totals	26,240	10		

Electors breakdown by locality

Current ward	Locality	SA1	Number of Electors	Ward	Ward totals
Champion Bay	Geraldton	5121002	2	City	
Champion Bay	Geraldton	5121007	121	City	
Champion Bay	Geraldton	5121018	44	City	
Champion Bay	Geraldton	5121020	252	City	
Champion Bay	Wonthella	5121002	206	City	
Port	Beachlands	5121008	261	City	
Port	Beachlands	5121009	181	City	
Port	Beachlands	5121010	283	City	
Port	Beachlands	5121011	281	City	
Port	Geraldton	5121007	212	City	
Port	Geraldton	5121011	4	City	
Port	Geraldton	5121015	177	City	
Port	Geraldton	5121016	145	City	
Port	Geraldton	5121017	260	City	
Port	Geraldton	5121018	285	City	

Port	Geraldton	5121019	314	City	
Port	Geraldton	5121020	2	City	
Port	Geraldton	5121021	335	City	
Port	West End	5121017	55	City	
Port	West End	5121022	344	City	
Willcock	Wonthella	5121003	212	City	
Willcock	Wonthella	5121004	370	City	
Willcock	Wonthella	5121005	180	City	
Willcock	Wonthella	5121006	291	City	
Willcock	Wonthella	5121023	4	City	
Willcock	Wonthella	5121024	1	City	
Willcock	Narngulu	5121118	6	City	
Champion Bay	Beresford	5121001	345	City	
Champion Bay	Beresford	5121014	26	City	
Champion Bay	Beresford	5121032	315	City	
Champion Bay	Beresford	5121033	373	City	
Champion Bay	Webborton	5121031	94	City	
Hills	Webborton	5121031	12	City	
Champion Bay	Spalding	5121025	258	City	
Champion Bay	Spalding	5121026	249	City	
Champion Bay	Spalding	5121027	276	City	
Champion Bay	Spalding	5121028	199	City	
Champion Bay	Spalding	5121029	212	City	
Champion Bay	Spalding	5121030	255	City	
Chapman	Bluff Point	5121012	155	City	
Chapman	Bluff Point	5121013	416	City	
Chapman	Bluff Point	5121014	382	City	
Hills	Utakarra	5121102	50	City	
Willcock	Utakarra	5121102	438	City	
Willcock	Utakarra	5121103	138	City	
Willcock	Utakarra	5121104	329	City	
Chapman	Drummond Cove	5121201	331	City	
Chapman	Drummond Cove	5121202	269	City	
Chapman	Drummond Cove	5121203	385	City	
Chapman	Glenfield	5121205	124	City	
Chapman	Glenfield	5121215	110	City	
Chapman	Glenfield	5121218	248	City	
Chapman	Sunset Beach	5121204	272	City	
Chapman	Sunset Beach	5121206	484	City	
Chapman	Sunset Beach	5121216	249	City	
Hills	Glenfield	5121215	24	City	
Hills	Rudds Gully	5121118	111	City	
Tarcoola	Rudds Gully	5121118	10	City	
Port	Tarcoola Beach	5121304	247	City	
Tarcoola	Tarcoola Beach	5121302	348	City	
Tarcoola	Tarcoola Beach	5121303	386	City	
Tarcoola	Wandina	5121301	329	City	
Tarcoola	Wandina	5121315	334	City	
Tarcoola	Wandina	5121316	777	City	
Tarcoola	Wandina	5121317	210	City	

Tarcoola	Wandina	5121318	304	City	
Tarcoola	Wandina	5121319	372	City	
Tarcoola	Wandina	5121320	277	City	
Willcock	Karloo	5121105	356	City	
Willcock	Karloo	5121118	7	City	
Willcock	Rangeway	5121106	179	City	
Willcock	Rangeway	5121107	181	City	
Willcock	Rangeway	5121109	302	City	
Willcock	Rangeway	5121111	223	City	
Willcock	Rangeway	5121112	187	City	
Willcock	Rangeway	5121117	266	City	
Port	Mahomets Flats	5121305	204	City	
Port	Mahomets Flats	5121310	283	City	
Tarcoola	Mahomets Flats	5121305	86	City	
Tarcoola	Mt Tarcoola	5121307	223	City	
Tarcoola	Mt Tarcoola	5121308	385	City	
Tarcoola	Mt Tarcoola	5121309	279	City	
Tarcoola	Mt Tarcoola	5121311	318	City	
Tarcoola	Mt Tarcoola	5121312	308	City	
Tarcoola	Mt Tarcoola	5121313	354	City	
Tarcoola	Mt Tarcoola	5121314	173	City	19865
Hills	Bootenal	5121711	25	Rural	
Hills	Bringo	5121710	28	Rural	
Hills	Burma Road	5121710	4	Rural	
Hills	Deepdale	5121101	619	Rural	
Hills	East Chapman	5121710	23	Rural	
Hills	Ellendale	5121710	11	Rural	
Hills	Eradu	5121710	12	Rural	
Hills	Eradu South	5121710	8	Rural	
Hills	Georgina	5121711	41	Rural	
Hills	Greenough	5121712	199	Rural	
Hills	Kojarena	5121710	26	Rural	
Hills	Meru	5121118	30	Rural	
Hills	Minnenooka	5121710	37	Rural	
Hills	Moonyoonooka	5121101	30	Rural	
Hills	Moonyoonooka	5121711	138	Rural	
Hills	Mt Hill	5121713	21	Rural	
Hills	Narngulu	5121118	36	Rural	
Hills	Northern Gully	5121710	12	Rural	
Hills	Sandsprings	5121710	5	Rural	
Hills	South Greenough	5121712	75	Rural	
Hills	Tibradden	5121710	3	Rural	
Hills	Walkaway	5121713	173	Rural	
Hills	Wicherina	5121710	2	Rural	
Mullewa	Ambania	5121722	11	Rural	
Mullewa	Devils Creek	5121722	13	Rural	
Mullewa	Mullewa	5121720	196	Rural	
Mullewa	Mullewa	5121721	18	Rural	
Mullewa	Nunierra	5121721	13	Rural	
Mullewa	Pindar	5121721	21	Rural	

11 Councillors

Target ratio of electors per councillor 2,385

Ward	Electors	Councillors	Ratio of electors per councillor	% ratio deviation
City	19,865	8	2,483	4.09%
Rural	6,375	3	2,125	-10.92%
Totals	26,240	11		

12 Councillors (9 City, 3 Rural)

Target ratio of electors per councillor 2,187

Ward	Electors	Councillors	Ratio of electors per councillor	% ratio deviation
City	19,865	9	2,207	0.94%
Rural	6,375	3	2,125	-2.82%
Totals	26,240	12		

12 Councillors (10 City, 2 Rural; Cape Burney, Deepdale and Stathalbyn in urban ward)

Target ratio of electors per councillor 2,187

Ward	Electors	Councillors	Ratio of electors per councillor	% ratio deviation
City	21,744	10	2,174	-0.56%
Rural	4,496	2	2,248	2.80%
Totals	26,240	12		

10 councillors, 5 wards (4 urban, 1 rural)

Target ratio of electors per councillor

2,624

Ward	Electors	Councillors	Ratio of electors per councillor	% ratio deviation
Rural	5,242	2	2,621	-0.11%
North	4,898	2	2,449	-6.67%
Central	5,583	2	2,792	6.38%
West	5112	2	2,556	-2.59%
South	5405	2	2,703	2.99%
	26,240	10		

Electors breakdown by locality

Current ward	Locality	SA1	Number of Electors	Ward	Ward totals
Champion Bay	Beresford	5121001	345	Central	5583
Champion Bay	Beresford	5121014	26	Central	
Champion Bay	Beresford	5121032	315	Central	
Champion Bay	Beresford	5121033	373	Central	
Hills	Utakarra	5121102	50	Central	
Willcock	Utakarra	5121102	438	Central	
Willcock	Utakarra	5121103	138	Central	
Willcock	Utakarra	5121104	329	Central	
Champion Bay	Webborton	5121031	94	Central	
Hills	Webborton	5121031	12	Central	
Champion Bay	Wonthella	5121002	206	Central	
Willcock	Wonthella	5121003	212	Central	
Willcock	Wonthella	5121004	370	Central	
Willcock	Wonthella	5121005	180	Central	
Willcock	Wonthella	5121006	291	Central	
Willcock	Wonthella	5121023	4	Central	
Willcock	Wonthella	5121024	1	Central	
Hills	Strathalbyn	5121108	366	Central	
Hills	Strathalbyn	5121110	182	Central	

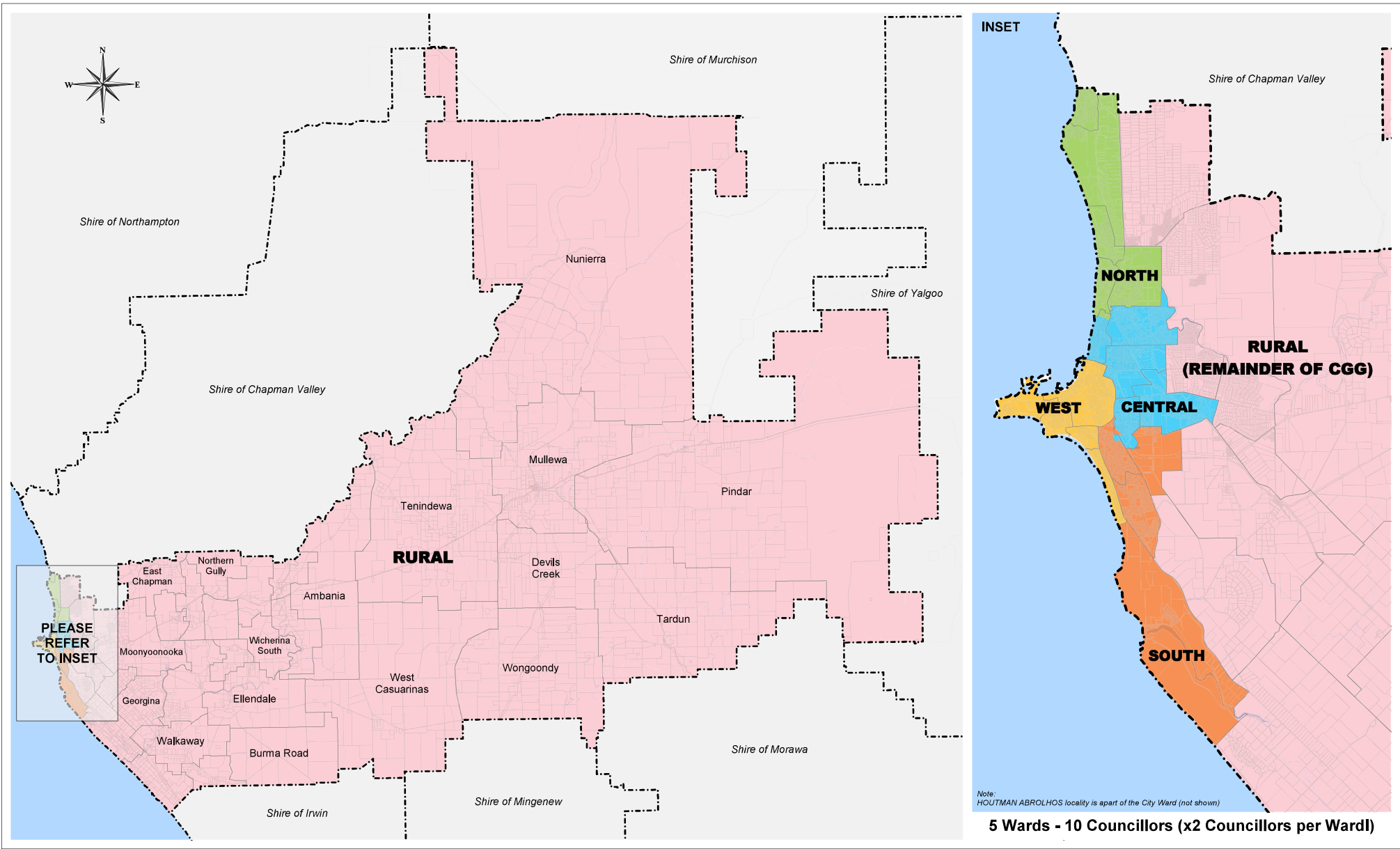
Hills	Strathalbyn	5121113	313	Central	
Willcock	Rangeway	5121106	179	Central	
Willcock	Rangeway	5121107	181	Central	
Willcock	Rangeway	5121109	302	Central	
Willcock	Rangeway	5121111	223	Central	
Willcock	Rangeway	5121112	187	Central	
Willcock	Rangeway	5121117	266	Central	
Chapman	Bluff Point	5121012	155	North	4898
Chapman	Bluff Point	5121013	416	North	
Chapman	Bluff Point	5121014	382	North	
Chapman	Drummond Cove	5121201	331	North	
Chapman	Drummond Cove	5121202	269	North	
Chapman	Drummond Cove	5121203	385	North	
Chapman	Glenfield	5121205	124	North	
Chapman	Glenfield	5121215	110	North	
Chapman	Glenfield	5121218	248	North	
Hills	Glenfield	5121215	24	North	
Champion Bay	Spalding	5121025	258	North	
Champion Bay	Spalding	5121026	249	North	
Champion Bay	Spalding	5121027	276	North	
Champion Bay	Spalding	5121028	199	North	
Champion Bay	Spalding	5121029	212	North	
Champion Bay	Spalding	5121030	255	North	
Chapman	Sunset Beach	5121204	272	North	
Chapman	Sunset Beach	5121206	484	North	
Chapman	Sunset Beach	5121216	249	North	
Hills	Deepdale	5121101	619	Rural	5242
Willcock	Narngulu	5121118	6	Rural	
Hills	Rudds Gully	5121118	111	Rural	
Tarcoola	Rudds Gully	5121118	10	Rural	
Hills	Bootenal	5121711	25	Rural	
Hills	Bringoo	5121710	28	Rural	
Hills	Burma Road	5121710	4	Rural	
Hills	East Chapman	5121710	23	Rural	
Hills	Ellendale	5121710	11	Rural	
Hills	Eradu	5121710	12	Rural	
Hills	Eradu South	5121710	8	Rural	
Hills	Georgina	5121711	41	Rural	
Hills	Greenough	5121712	199	Rural	
Hills	Kojarena	5121710	26	Rural	
Hills	Meru	5121118	30	Rural	

Hills	Minnenooka	5121710	37	Rural	
Hills	Moonyoonooka	5121101	30	Rural	
Hills	Moonyoonooka	5121711	138	Rural	
Hills	Mt Hill	5121713	21	Rural	
Hills	Narngulu	5121118	36	Rural	
Hills	Northern Gully	5121710	12	Rural	
Hills	Sandsprings	5121710	5	Rural	
Hills	South Greenough	5121712	75	Rural	
Hills	Tibradden	5121710	3	Rural	
Hills	Walkaway	5121713	173	Rural	
Hills	Wicherina	5121710	2	Rural	
Mullewa	Ambania	5121722	11	Rural	
Mullewa	Devils Creek	5121722	13	Rural	
Mullewa	Mullewa	5121720	196	Rural	
Mullewa	Mullewa	5121721	18	Rural	
Mullewa	Nunierra	5121721	13	Rural	
Mullewa	Pindar	5121721	21	Rural	
Mullewa	Tardun	5121722	15	Rural	
Mullewa	Tenindewa	5121722	27	Rural	
Mullewa	West Casuarinas	5121722	19	Rural	
Mullewa	Wongoondy	5121722	24	Rural	
Hills	Moresby	5121211	301	Rural	
Hills	Moresby	5121212	343	Rural	
Hills	Woorree	5121102	1	Rural	
Hills	Woorree	5121114	359	Rural	
Hills	Woorree	5121115	349	Rural	
Hills	Woorree	5121116	271	Rural	
Chapman	Waggrakine	5121207	257	Rural	
Chapman	Waggrakine	5121208	405	Rural	
Chapman	Waggrakine	5121209	245	Rural	
Chapman	Waggrakine	5121210	265	Rural	
Hills	Waggrakine	5121207	2	Rural	
Hills	Waggrakine	5121213	231	Rural	
Hills	Waggrakine	5121214	171	Rural	
Hills	Cape Burney	5121306	399	South	5405
Tarcoola	Mt Tarcoola	5121307	223	South	
Tarcoola	Mt Tarcoola	5121308	385	South	
Tarcoola	Mt Tarcoola	5121309	279	South	
Tarcoola	Mt Tarcoola	5121311	318	South	
Tarcoola	Mt Tarcoola	5121312	308	South	
Tarcoola	Mt Tarcoola	5121313	354	South	

Tarcoola	Mt Tarcoola	5121314	173	South	
Tarcoola	Wandina	5121301	329	South	
Tarcoola	Wandina	5121315	334	South	
Tarcoola	Wandina	5121316	777	South	
Tarcoola	Wandina	5121317	210	South	
Tarcoola	Wandina	5121318	304	South	
Tarcoola	Wandina	5121319	372	South	
Tarcoola	Wandina	5121320	277	South	
Willcock	Karloo	5121105	356	South	
Willcock	Karloo	5121118	7	South	
Port	Tarcoola Beach	5121304	247	West	5112
Tarcoola	Tarcoola Beach	5121302	348	West	
Tarcoola	Tarcoola Beach	5121303	386	West	
Port	Beachlands	5121008	261	West	
Port	Beachlands	5121009	181	West	
Port	Beachlands	5121010	283	West	
Port	Beachlands	5121011	281	West	
Champion Bay	Geraldton	5121002	2	West	
Champion Bay	Geraldton	5121007	121	West	
Champion Bay	Geraldton	5121018	44	West	
Champion Bay	Geraldton	5121020	252	West	
Port	Geraldton	5121007	212	West	
Port	Geraldton	5121011	4	West	
Port	Geraldton	5121015	177	West	
Port	Geraldton	5121016	145	West	
Port	Geraldton	5121017	260	West	
Port	Geraldton	5121018	285	West	
Port	Geraldton	5121019	314	West	
Port	Geraldton	5121020	2	West	
Port	Geraldton	5121021	335	West	
Port	Mahomets Flats	5121305	204	West	
Port	Mahomets Flats	5121310	283	West	
Tarcoola	Mahomets Flats	5121305	86	West	
Port	West End	5121017	55	West	
Port	West End	5121022	344	West	

26240

26240



Map produced by the City of Greater Geraldton
 W: www.cgg.wa.gov.au E: council@cgg.wa.gov.au

Proposed 5 Wards - 10 Councillors (x2 per Ward)

Scale: 1:NOT TO SCALE

Date	18-Oct-18
Department	IS [Engineering - GIS]
Drawing No.	Proposed Wards
Operator	RJT
Paper Size	A3

Disclaimer: Whilst all care has been taken in the preparation of this data, this information is provided as a guide only and no responsibility shall be taken for any omissions or errors in this documentation. The accuracy provided is not to be used for legal purposes, but reference made to original documentation, which includes Certificate of Titles, Survey Diagrams and legal versions of the Town Planning Schemes.