

CEO114 – Attachment A - E-RIDEABLE HIRE TRIAL OUTCOME – Road Safety Commission Extract

EXTRACT FROM WESTERN AUSTRALIA ROAD SAFETY COMMISSION WEBSITE:

(<https://www.wa.gov.au/organisation/road-safety-commission/erideables>)

Updated 7 November 2023

What's an eRideable?

An eRideable is an electric rideable device, such as a scooter, skateboard or other vehicle, that:

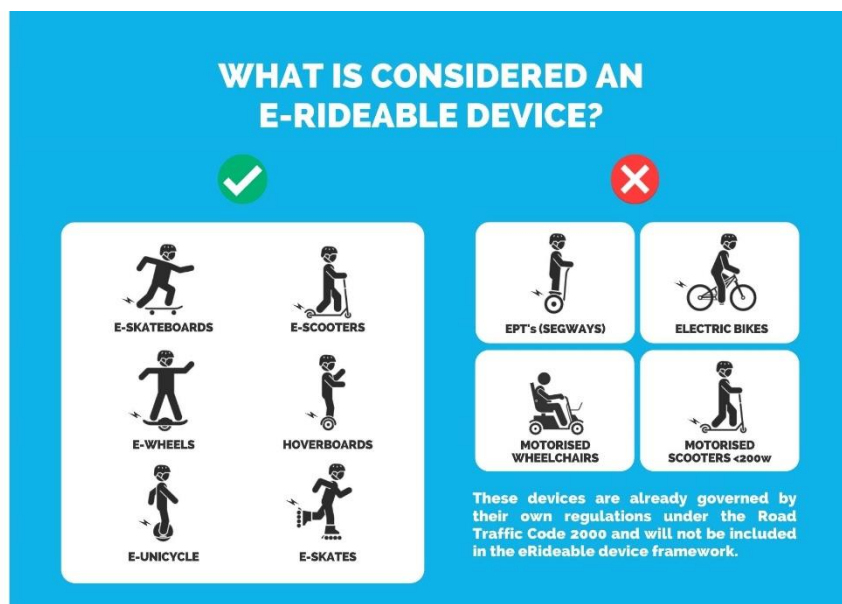
- has at least one wheel
- is designed to be used by only one person
- is no more than 125cm long, 70cm wide and 135cm high
- is 25kg or less
- is not capable of travelling faster than 25km/h on level ground.

There is no restriction on power output for eRideables as long as it is compliant with the speed, size and weight limits outlined above. However, the 200w limit still applies to children (under the age of 16) riding low-powered motorised scooters.

What's not an eRideable?

- an eBike or power assisted pedal cycle
- an electric personal transporter (eg. Segway)
- a motorised wheelchair or mobility scooter
- motorised scooters 200w or less with a top speed of 10 km/h.

These devices are already governed by their own regulations under the Road Traffic Code 2000 and are not included in the eRideable rules.



What if I have a device that doesn't meet the rules?

CEO114 – Attachment A - E-RIDEABLE HIRE TRIAL OUTCOME – Road Safety Commission Extract

If you have a device which falls outside of the eRideable specifications (125cm long, 70cm wide, 135cm high, 25kg and capable of travelling faster than 25km/h) it may not be ridden on WA roads and paths.

Are there any age restrictions?

Only people aged 16 or over are permitted to use eRideables. Children under 16 are not permitted to ride devices that can go faster than 10km/h. Children under 16 can ride low-powered electric scooters which do not exceed 200w or 10km/h. These motorised scooters are not considered eRideables and are governed by their own regulations under Road Traffic Code 2000. Under-16s are only allowed to use eRideables on private property and places that aren't public roads or paths.

Where to ride your eRideable

eRideables can be ridden on:

- footpaths, bicycle paths and shared paths
- roads where there are no dividing lines AND the speed limit is 50 km/h or less
- bicycle lanes (on roads with a speed limit of 50km/h or less).
- Pedestrian crossings

eRiders and cyclists no longer need to dismount at pedestrian crossings and can simply ride across. This rule applies when the rider enters the crossing from the connected path and not the road. Riders must not exceed 10km/h and must give way to pedestrians when riding over the crossing.

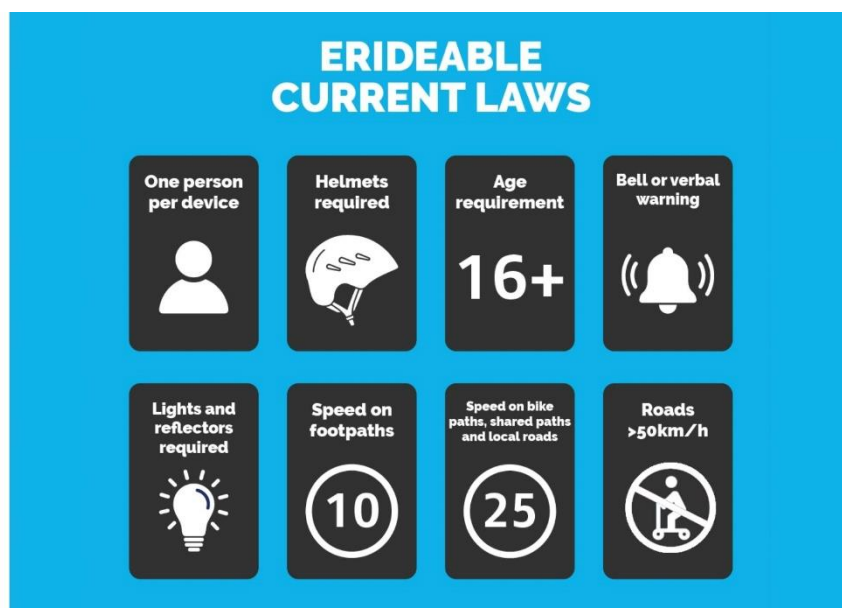
Where can't I ride?

It is illegal to ride on:

- roads with a dividing line
- roads where the speed limit is more than 50km/h
- any path designated 'no wheeled devices'
- any path or road where a 'no bicycle' sign or marking applies.

When using a separated path, eRideables should use the bicycle part. It is illegal to ride in the section marked for pedestrians.

Road rules and safety for eRideables



Keep to the speed limit

On footpaths, keep to 10km/h or less. On bicycle paths, shared paths and local roads eRideables can be ridden up to 25km/h where safe. Always ride to the conditions and slow down where there’s congestion, before turning corners and when passing pedestrians. At pedestrian crossings, you no longer need to dismount and can ride across. Your speed on pedestrian crossings must not exceed 10km/h. Always give way to pedestrians.

Speed Limits for eRideables

Location	Speed Limit
Footpaths	10 km/h
Bicycle paths and shared paths	25 km/h
Local roads	25 km/h
Pedestrian crossings	10 km/h