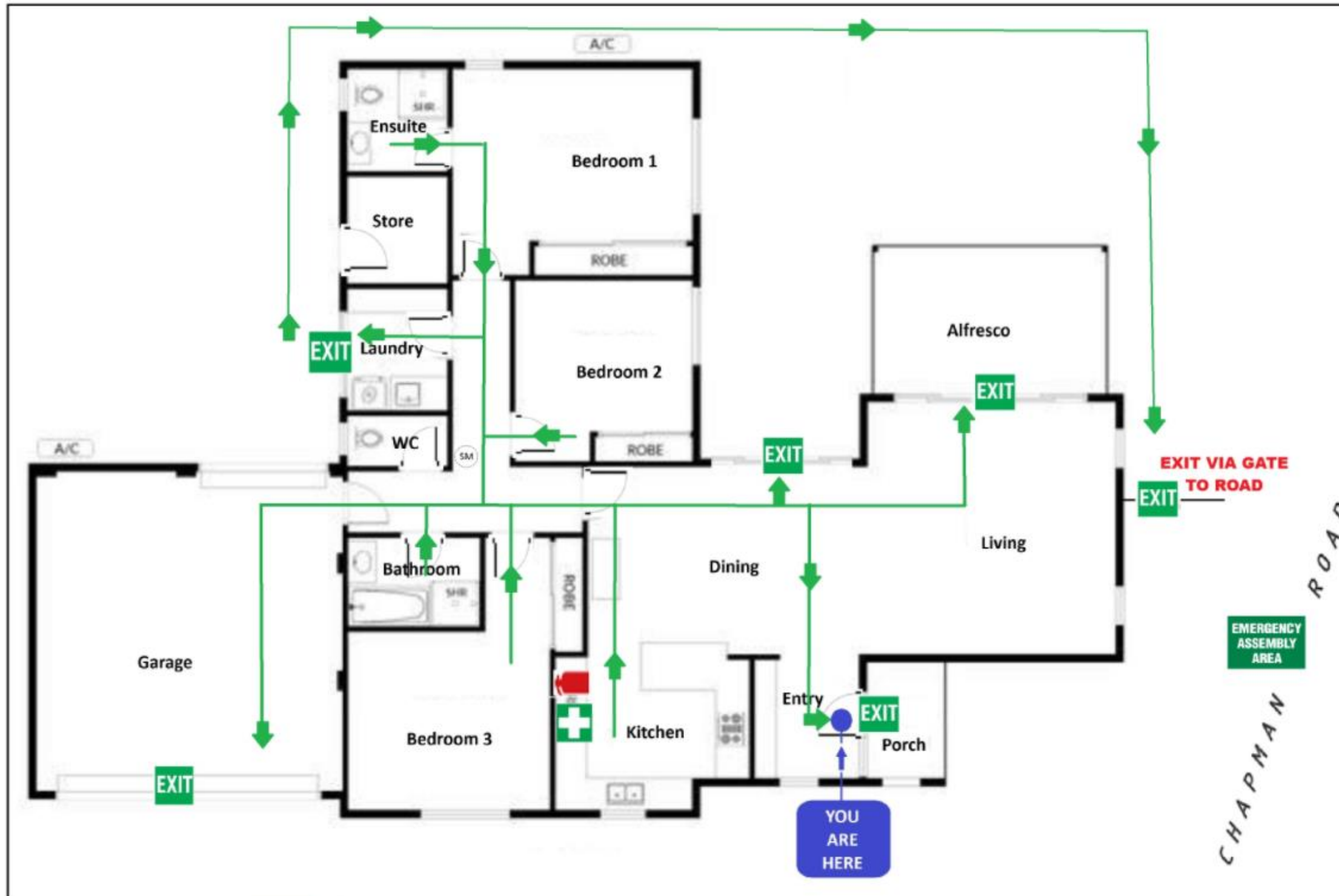


EVACUATION DIAGRAM

7/305 Chapman Road, Bluff Point WA 6530

Issue date: 13/06/2025



EMERGENCY PROCEDURE

In the event of an emergency:

1. **Stay calm and do not panic.**
2. **Alert others** in the property.
3. **Proceed to the nearest safe exit** as outlined below.

PRIMARY EXIT

- **Main Exit:** Via **Entry Door** (front porch).
- All occupants should exit here **unless unsafe** (e.g., blocked by fire, debris, or threat).

SECONDARY EXITS

Use only if **safe to do so**:

- **Dining Room** to **Alfresco** and then through **Exit Gate to Chapman Road**.
- **Living Room** to **Alfresco** and **Exit Gate**.
- **Laundry Exit** to backyard, then proceed to **Exit Gate**.

⚠ Do not use secondary exits unless you are certain the route is safe.

EMERGENCY ASSEMBLY AREA

- Located **outside on Chapman Road**, as marked on the diagram.
- **Report to this area** immediately after evacuating. If it is not safe to stay here head North along Chapman Road to nearest cross street Cecily Street.
- **Do not re-enter** the property until cleared by emergency personnel.

IMPORTANT

- Familiarise yourself with all exit paths.
- Keep exit routes **clear at all times**.
- In case of smoke, **stay low** and move quickly.
- **Call 000** for emergency services once safe.

EXIT

EXIT POINT

EVACUATION PATH



DIRECTIONAL ARROWS TO NEAREST EXIT

EMERGENCY ASSEMBLY AREA

EMERGENCY ASSEMBLY POINT



FIRST AID KIT



FIRE EXTINGUISHER



YOUR LOCATION



SMOKE DETECTOR