

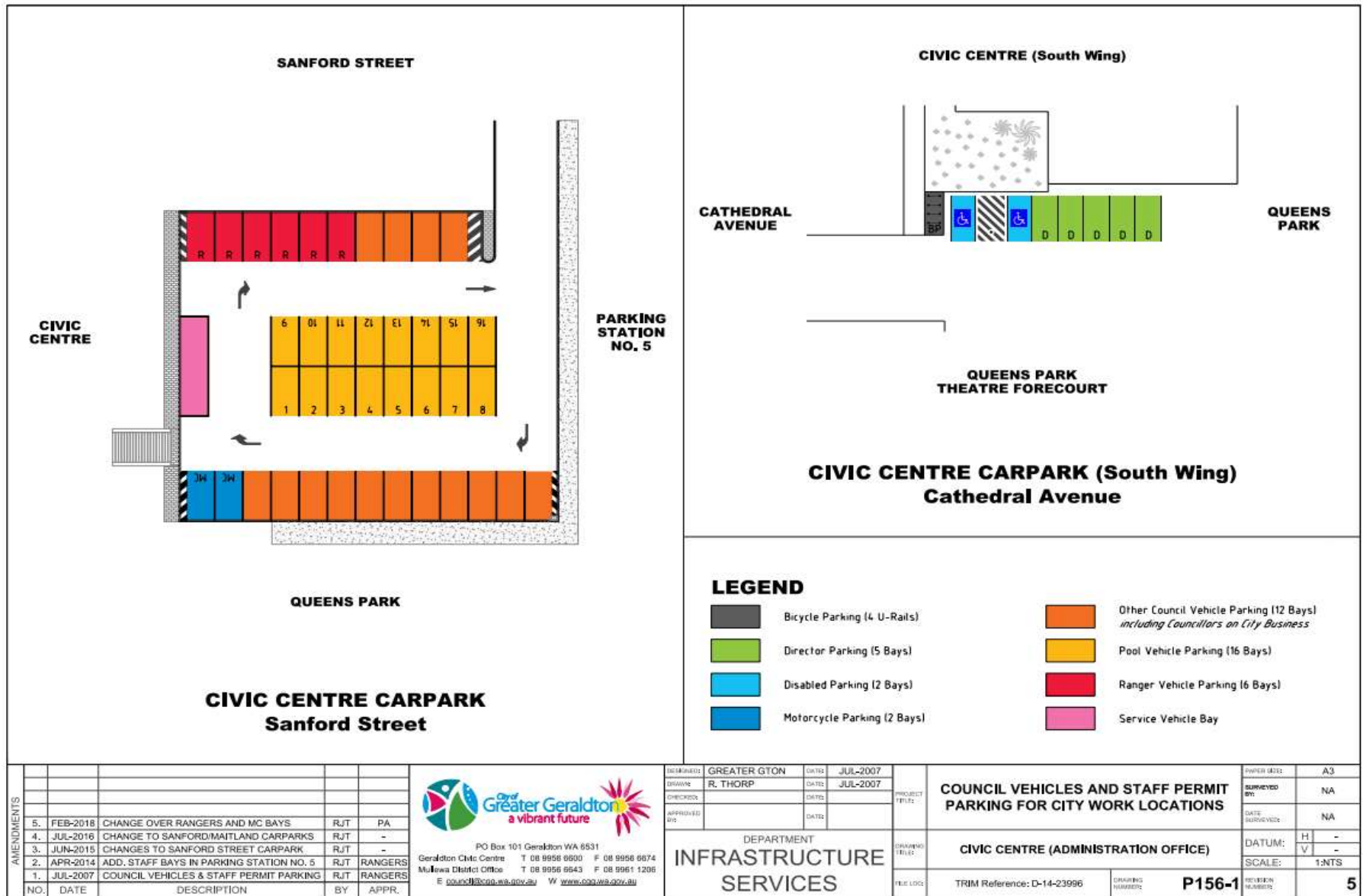
Maps, Systems and **Office Layouts**

Parking on your first day

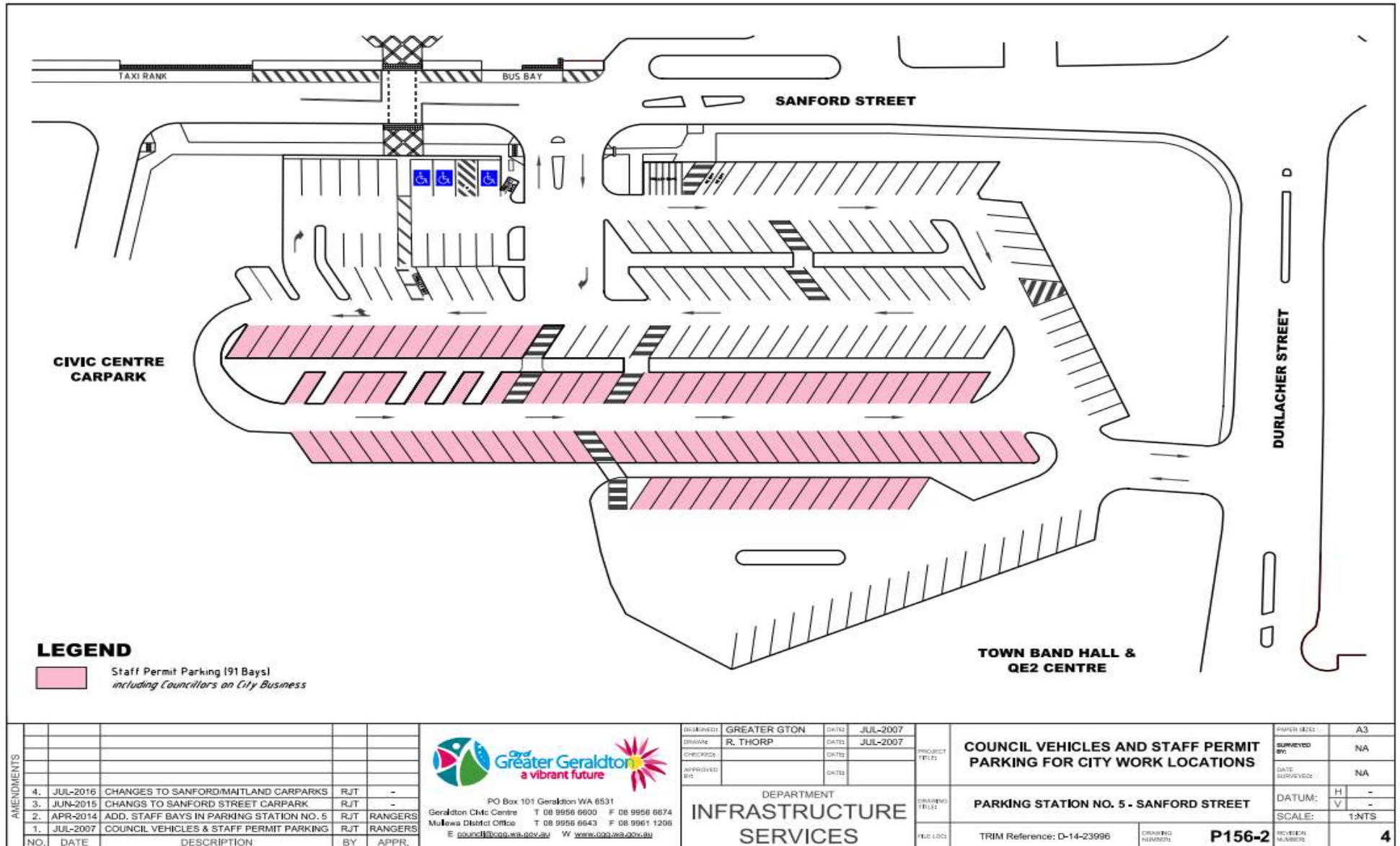
To help make your first day a little easier, we've provided you with some information on where to park to avoid being issued a parking fine. Each City work location has a unique parking arrangement.

If your work location requires you to display a Staff Parking Permit, you will be issued with one on your first day. It is important that you do not park in areas that require a Staff Parking Permit prior to you obtaining one.

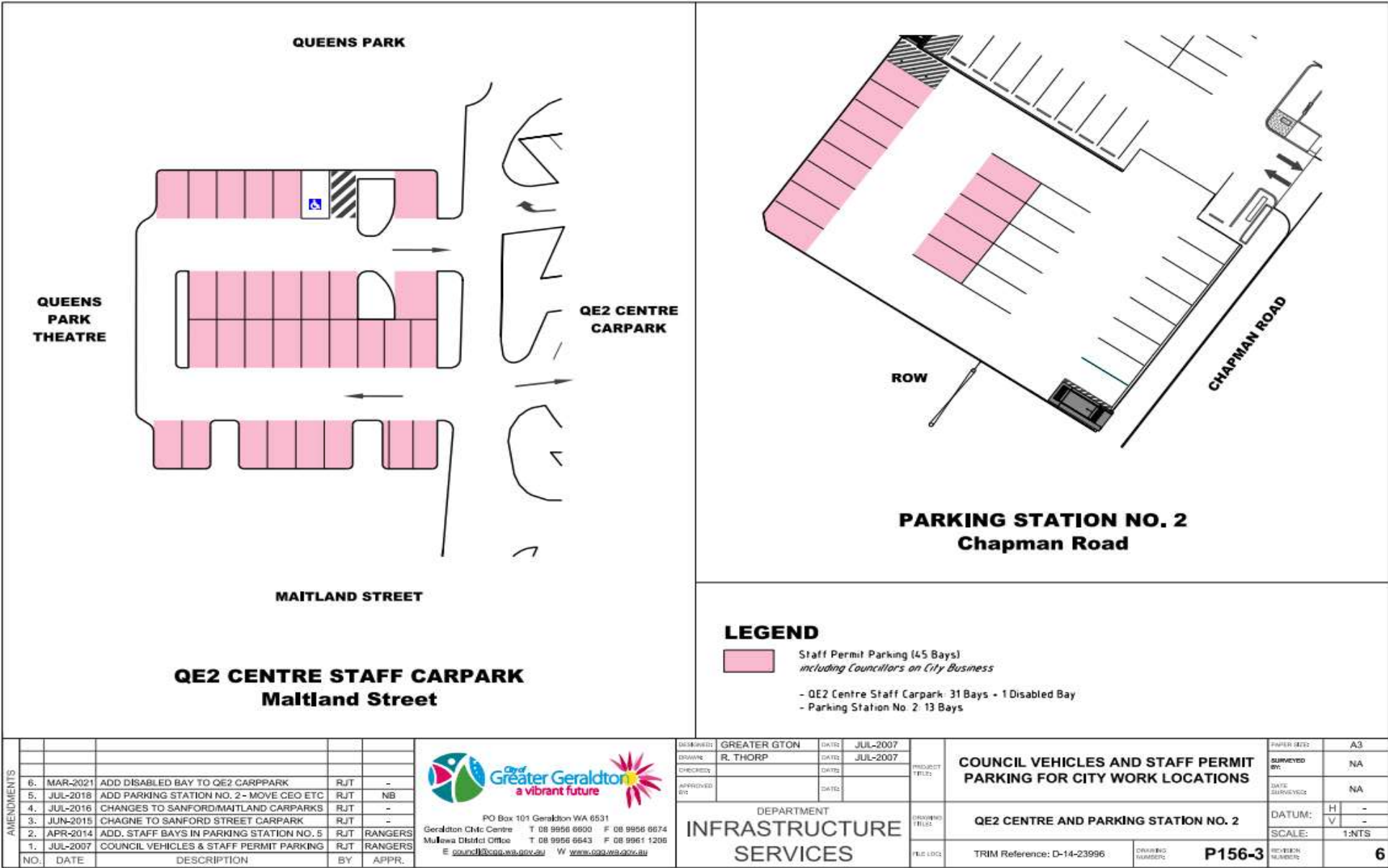
Maps, Systems and Office Layouts



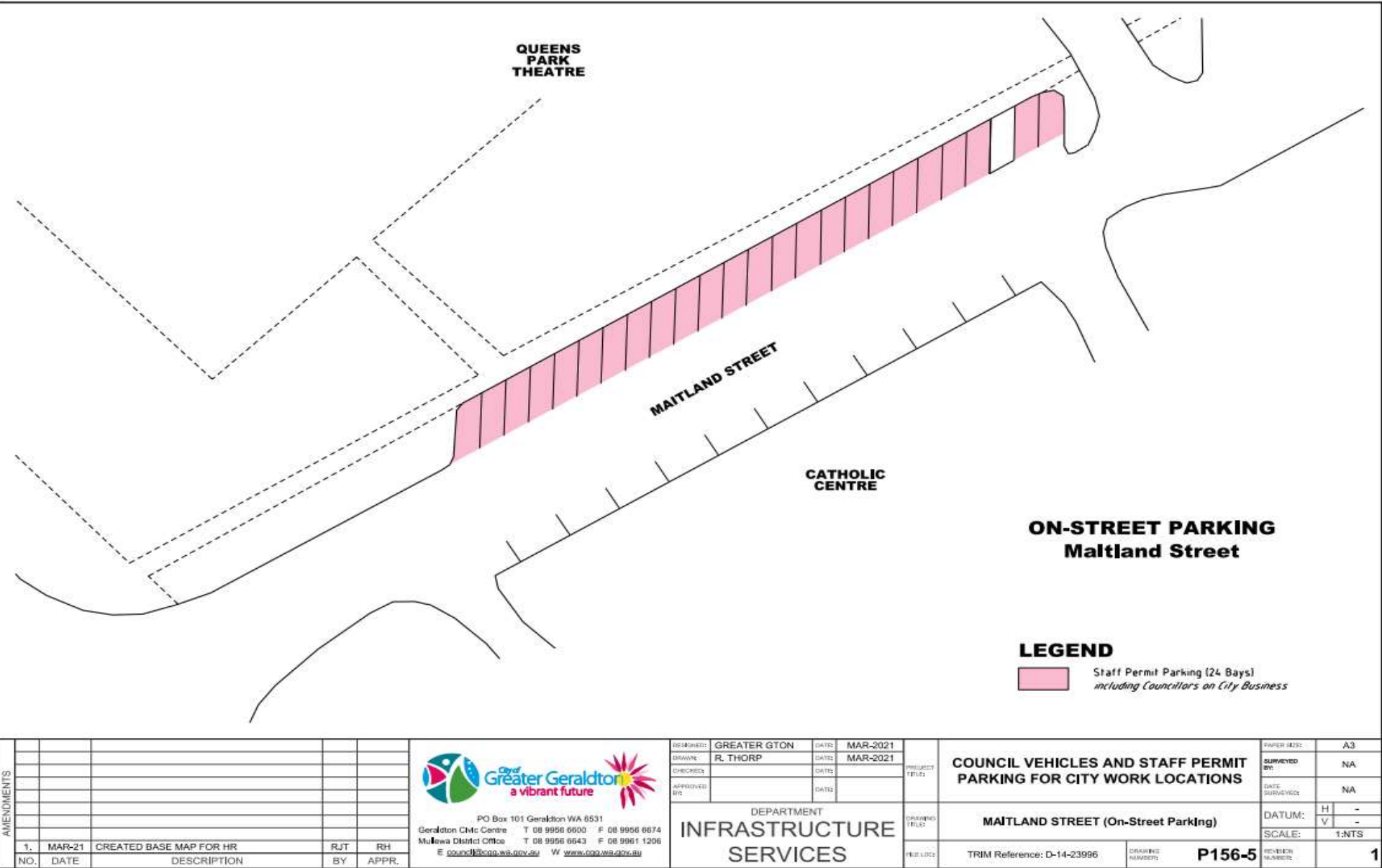
Maps, Systems and Office Layouts



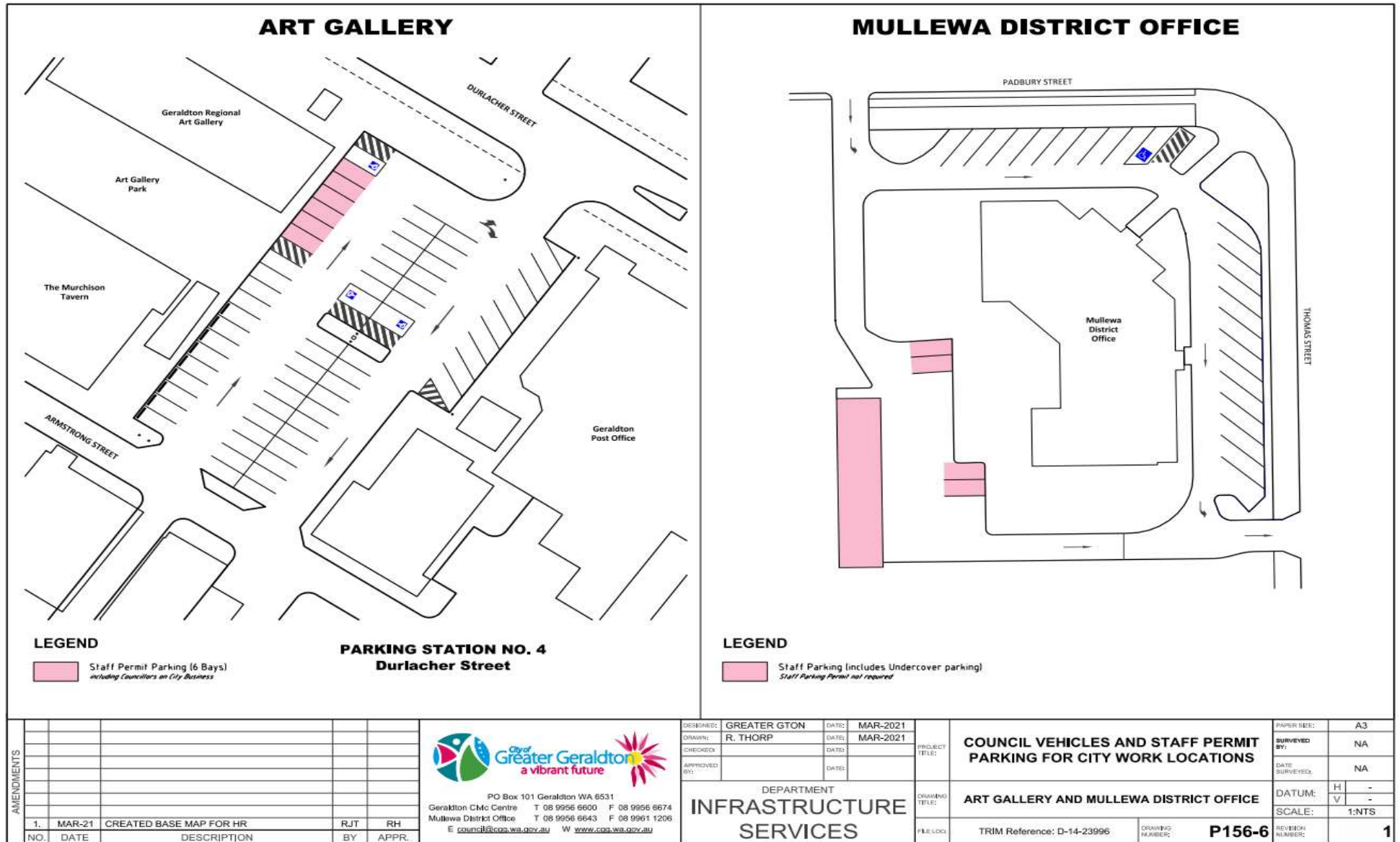
Maps, Systems and Office Layouts



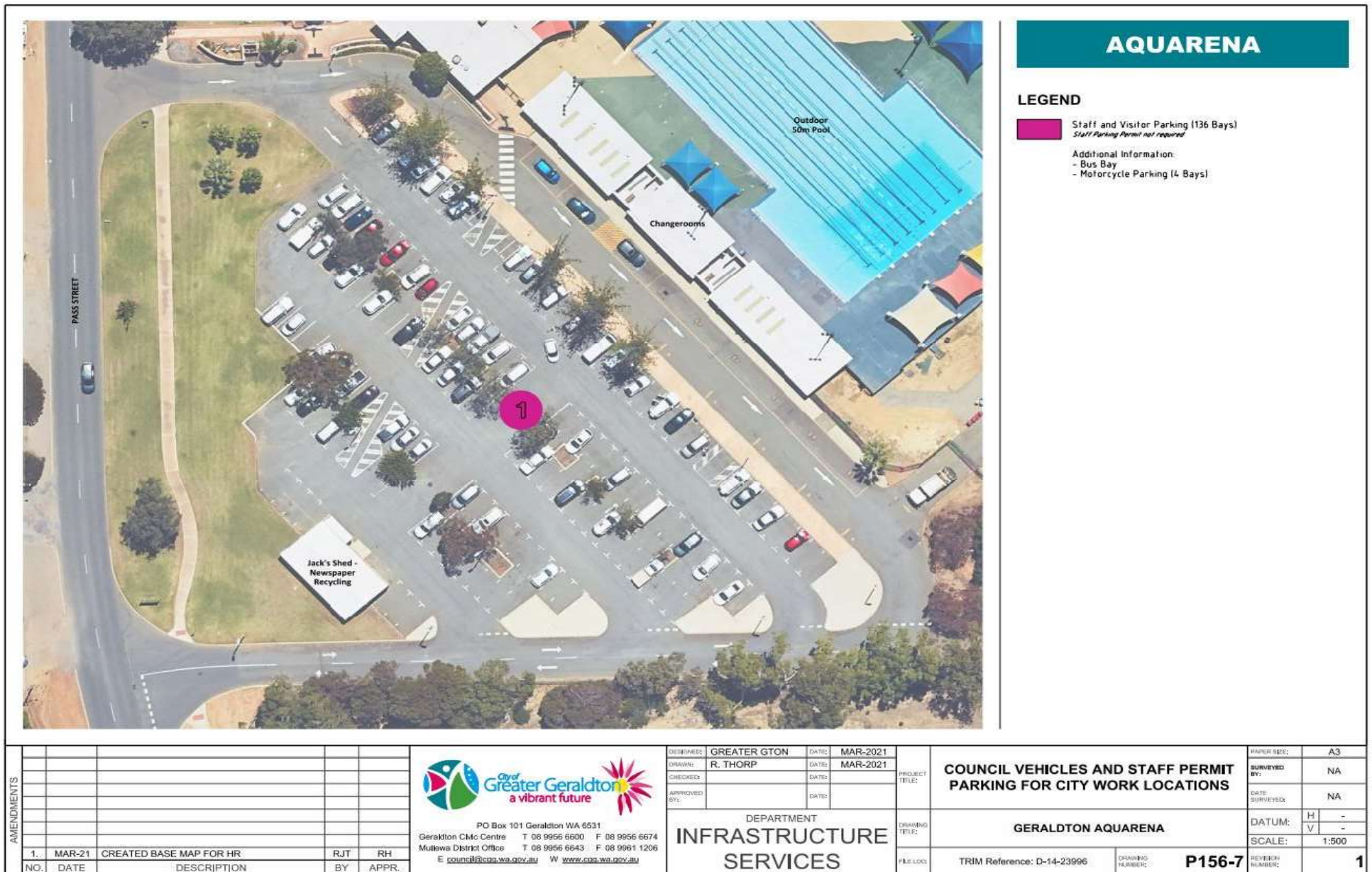
17 | Page



Maps, Systems and Office Layouts



Maps, Systems and Office Layouts



Maps, Systems and Office Layouts

