

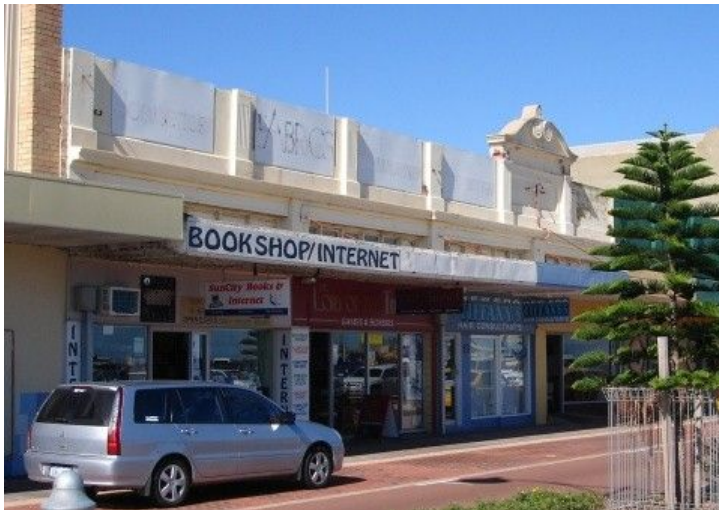
<b>Area:</b> Geraldton	<b>Place Number:</b> 275	<b>Category:</b> 3
<b>Assessment Date:</b> 05/12/1996	<b>Last Revision Date:</b> 30/11/2009	
<b>HCWA Number:</b> 13441	<b>Asset ID:</b> MCH127113	

### PLACE DETAILS

<b>Name:</b>	Oswell's Grocery & Draper's Store Fmr
<b>Other Names:</b>	49-53 Marine Terrace
<b>Type of Place:</b>	Shops
<b>Address:</b>	49-53 Marine Terrace
<b>Suburb:</b>	Geraldton

### LOCATION

<b>Map Reference:</b> 15.15	<b>GPS Northing:</b> 6814935.00	<b>GPS Easting:</b> 266778.000
	<b>GPS Northing:</b> 0000	<b>GPS Easting:</b> 000



#### Photo Description:

3/08/2007  
Rod Milne  
Row of shops.

## SITE DETAILS

<b>Lot No.:</b>	Lot 12	<b>Assess No.:</b>	11519
<b>Reserv No.:</b>		<b>Vol/Fol:</b>	
<b>Dia/Plan:</b>	173496		

## USE OF PLACE

<b>Original Use:</b>	Shops		
<b>Current Use:</b>	Shops		
<b>Ownership:</b>	City of Greater Geraldton		
<b>Public Access:</b>	Restricted	<b>Occupied:</b>	Occupied

## DESCRIPTION

<b>Walls:</b>	Rendered Masonry	<b>Roof:</b>	Corrugated Iron
<b>Condition:</b>	Good	<b>Integrity:</b>	
<b>Original fabric:</b>	Highly intact		
<b>Modifications:</b>	Walls clad with sheeting		

This single storey rendered brick building fronts directly on to the street. To the front elevation there are five shops, four with large shop windows and one with a brick facade. All of the shop fronts have been altered. A suspended box awning runs the entire length of the building. Above the box awning, a rendered masonry buttressed parapet wall has rusticated panel decoration to the buttresses and a centrally placed decorative classical styled pediment above.

## HISTORY

<b>Construction Date:</b>	1906	<b>Source:</b>	Jim Lowrie
<b>Architect:</b>	Unknown		
<b>Builder:</b>	Unknown		

This general store was built and opened in July 1906. (Jim Lowrie, "A Mixed Bag of Things that Happened over the Years") In 1907 this was Oswell's Grocery and Drapers Store. (Source: Shirley Scotter) For many years it was also known as the Victoria Cash Store, with Oswell's business closing down and being taken over by Tom the Cheap Grocer in 1960. (Jim Lowrie, "The History of Wing on Woo".)

## HISTORIC THEMES

<b>HCWA:</b>	308 Commercial services and industries
<b>AHC:</b>	3.19 Marketing and retailing 8.1.3 Developing public parks and gardens

## STATEMENT OF SIGNIFICANCE

Although altered at street level, this series of shops has aesthetic significance given that a number of original built features are retained such as the simple parapet with decorative central pediment. As such the place has streetscape value.

## MANAGEMENT CATEGORY

<b>Management Category:</b>	3
<b>Level of Significance:</b>	MODERATE SIGNIFICANCE: Important to the heritage of the locality.
<b>Management Recommendation:</b>	Conservation of the place is recommended. Any proposed change to the place should not unduly impact on the heritage values of the place and should retain significant fabric wherever feasible.

## OTHER LISTINGS

No other listings

## SUPPORTING INFORMATION

Considine & Griffiths Architects, "Geraldton Foreshore Conservation Plan", 2002 - Building 5.  
Lowrie, J., "A Mixed Bag of Things that Happened Over the Years".  
Lowrie, J., "The History of Wing on Woo".  
GLLSPC - Geraldton (General).

## OTHER PHOTOS



**Photo Description:**

5/12/1996  
Suba & Grundy  
Row of shops.