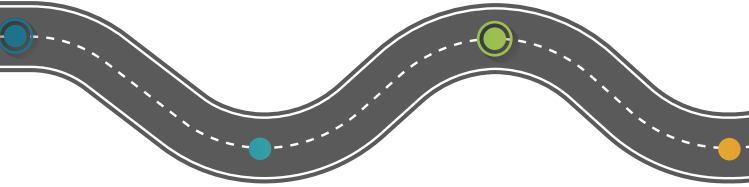




# WE'RE TOGETHER ON THE ROAD TO **RECOVERY**



## RATE CATEGORIES

The City of Greater Geraldton have three differential rate categories:

- Residential – any GRV rated property that is used for residential purposes
- Non-Residential – any GRV rated property that is used for non-residential purposes
- UV – all UV rated property used primarily for rural, farming or mining purposes

DIFFERENTIAL GENERAL RATES 2020-21	RATE IN THE DOLLAR (CENTS)	MINIMUM PAYMENTS PER ASSESSMENT
CGG Residential	14.8529	\$1,010
CGG Non-Residential	12.2934	\$1,010
CGG UV	0.7775	\$1,010

## 2020/21 RATES RELIEF PACKAGE

- 5% discount on rates paid by the due date
- No increase to the rate in the dollar
- 0% instalment interest
- No instalment charges
- 0% rates penalty interest until fourth instalment due date then reduced rate of 8%

## OBJECTS AND REASONS FOR DIFFERENTIAL RATES

Each category reflects the level of rating required to raise the necessary revenue for Council to operate efficiently and provide the diverse range of services, programs, associated infrastructure and facilities required for each of the differential areas of the City of Greater Geraldton.

# WE'RE TOGETHER ON THE ROAD TO **RECOVERY**

## **EMERGENCY SERVICES LEVY**

The Emergency Services Levy (ESL) is a compulsory State Government charge that is collected by local government.

## **RUBBISH REMOVAL CHARGES**

The rubbish removal charge for 2020/21 will remain the same and is \$388 per bin, serviced weekly.

## **VALUATIONS**

New UV valuations take effect from 1 July 2020. No change to GRV valuations unless your property was subject to an interim valuation during 2019-20.

Should you have a valuation query please contact Landgate Customer Service on 9273 7373.

## **HOW TO PAY YOUR RATES**

**Mail:** Cheques made payable to the City of Greater Geraldton

**BPay:** Contact your financial institution for information

**Internet:** BPoint on our website at [www.cgg.wa.gov.au](http://www.cgg.wa.gov.au)

**In person:** At Cathedral Avenue or Mullewa District Offices

**eRates:** Sign up via [erateswa.com/greatergeraldton](http://erateswa.com/greatergeraldton)

## **DISCOUNT DETAILS**

The City is offering a 5% discount on rates paid in full (total amount due on rates notice) by 24 August 2020 (35 days after issue of notice) or in the case of pensioners if the relevant portion of rates levied is paid by 24 August 2020. Payment must be in full and include any arrears. The discount does not apply to the separate rubbish charge or the Emergency Services Levy.

No discount will be applied to minimum rates of \$1,010.

With the discount applied the total rates owing will not fall below the minimum rates amount of \$1,010.

## **FINANCIAL HARDSHIP**

If you are unable to pay your rates by the due date, or are unable to meet instalment amounts, contact our office on 9956 6600 to make alternative arrangements.

**TO VIEW RATES FAQs PLEASE VISIT [Cgg.Wa.Gov.Au](http://Cgg.Wa.Gov.Au)**

**Geraldton Civic Centre**

**T** 9956 6600 **F** 9956 6674

**Mullewa Office**

**T** 9956 6643 **F** 9961 1206

**E** [council@cgg.wa.gov.au](mailto:council@cgg.wa.gov.au) | **W** [www.cgg.wa.gov.au](http://www.cgg.wa.gov.au)