



City of  
**Greater Geraldton**  
a vibrant future



## **MULLEWA EMERGENCY MANAGEMENT PLAN**

### **SUB-PLAN TO THE CITY OF GREATER GERALDTON LOCAL EMERGENCY MANAGEMENT ARRANGEMENTS**

**October 2016**

## CONTENTS

<b>1. Authority.....</b>	<b>3</b>
<b>2. Introduction .....</b>	<b>4</b>
<b>3. Threats.....</b>	<b>4</b>
Flooding.....	5
Aircraft Crash .....	5
Hazardous Materials Emergencies.....	6
Road Crash .....	6
Fire (Urban & Bush).....	6
Rail Crash.....	7
Earthquake .....	7
Animal & Plant Biosecurity.....	7
Cyclone / Severe Storm.....	7
<b>4. Emergency Management Organisations .....</b>	<b>8</b>
<b>5. Communication .....</b>	<b>10</b>
<b>6. Health .....</b>	<b>10</b>
<b>7. Welfare .....</b>	<b>10</b>
<b>8. Evacuation Assembly Areas.....</b>	<b>11</b>
<b>9. Rescue.....</b>	<b>11</b>
<b>10. Survey &amp; Assessment .....</b>	<b>12</b>
<b>11. Public Information.....</b>	<b>12</b>
<b>12. Resources.....</b>	<b>12</b>
<b>13. Contact Details .....</b>	<b>12</b>
<b>14. Activation .....</b>	<b>13</b>
<b>Annexes.....</b>	<b>14</b>
A. Local Rivers .....	14
B. Levee system.....	15
C. Mullewa Airfield.....	16
D. Gazetted Fire District.....	17
E. Nature Reserves .....	18
F. Rail lines.....	19
G. Communications Plan.....	20
H. Evacuation Assembly Areas.....	21
I. Contact Details .....	22
J. Distribution List.....	23
K. Resources - Police .....	24
L. Resources – Local Government.....	25
M. Resources – Fire & Rescue .....	26
N. Resources – Bush Fire Brigades.....	27
O. Resources – St John Ambulance.....	28

## 1. AUTHORITY

This sub-plan has been produced and issued under the authority of Section 41(1) of the Emergency Management Act 2005. The responsible authority for this plan is the City of Greater Geraldton.

### Contact Officer

For copies of this plan, or to provide comment, contact:

City of Greater Geraldton  
LEMC Chairperson  
PO Box 101  
GERALDTON WA 6531

[council@cgg.wa.gov.au](mailto:council@cgg.wa.gov.au)

### Amendment Record

Amendment #	Date	Details	Amended By;
1	2006	Original Document	Shire of Mullewa
2	8 Aug 2016	Rewrite in accordance with SEMC Guidelines, stakeholder consultation	Brendan Wilson, CGG
3	13 Sept 2016	Reviewed in accordance with revised SEMC Policy, stakeholder consultation	Brendan Wilson, CGG
4	22 Sept 2016	Updated mapping, resources, pre-formed communications plan	Brendan Wilson, CGG
5	4 Oct 2016	Amended in accordance with SEMC LEMA Guidelines May 16	Brendan Wilson, CGG
6	3 Nov 2016	Review of Draft	District Advisor, SEMC
7	28 Feb 2017	Endorsed by Council	Brendan Wilson, CGG
8			
9			
10			

## **2. INTRODUCTION**

This sub-plan is developed to provide specific local arrangements for the Mullewa community (and surrounding communities).

The subject of this plan is the town site of Mullewa and minor town sites of Tenindewa, Tardun, Pindar, Kardaloo and Wandalgu. Approx. 550 people live in the Mullewa town area, and minor town sites vary seasonally according to agricultural cycles and cultural practices.

The Kardaloo community (aka Wandanooka) is a registered Aboriginal Community 26 km North East of Mullewa on the Carnarvon-Mullewa Road. The community has a population of approx. 40 residents.

Wandalgu, originally a boarding school and working agricultural school, is now a supported accommodation project developed and administered by Sun City Care Inc. The facility helps community members with life controlling issues, and when fully operational, may provide accommodation for up to 200 people.

For the purpose of this plan, geographical applicability will refer to the City of Greater Geraldton Local Government Area, bounded to the West by the Greenough River.

The aim of this plan is to detail the arrangements in place, in order to deal with the effect of a disaster and/or incident occurring in the aforementioned area.

## **3. THREATS**

The threats faced by the community are listed below;

- Flooding
- Aircraft Crash
- Industrial Accidents (including hazardous materials)
- Major Land Traffic Crashes
- Fire (bush & urban)
- Rail Crash
- Earthquakes
- Animal or Plant, Pests or Diseases
- Cyclone and/or Severe Storm.

## **FLOODING**

The Greenough, Irwin and Wooderarrung Rivers flowing through the Mullewa area are subject to major flooding and this can have a dramatic effect on the area by cutting off many major and minor access roads.

With in-flow assistance from numerous additional watercourses that feed these rivers, such as Kockatea Gully, flooding has the capacity to isolate Mullewa, and many of the farming families and entities in the surrounding areas.

It is noteworthy that a levy system has been established within the Mullewa town area, connecting dams at the Eastern and Western ends of the town via a channel parallel to the railway line. This system provides capacity for these dams to store storm water before the town area is affected. The Eastern dam discharges into the Wooderarrung River once at 100% capacity, however it is important to note that should a flooding event inundate the Wooderarrung River, the inability to discharge water may still lead to localised flooding.

It is also noteworthy that a significant flooding event, may see the Geraldton-Mount Magnet Highway closed at river crossings / flood ways including the Greenough River (approx. 50km West of Mullewa), Kockatea Gully (approx. 17km West of Mullewa) and the Carnarvon-Mullewa Road at the Wooderarrung Creek (approx. 3.7km North of Mullewa) and the Wenmillia Creek (approx. 9.4km North of Mullewa).

The Hazard Management Agency in response to flooding is the Dept. of Fire and Emergency Services.

A map of local rivers is available at Annex. A, and a map of the Mullewa town levy system is available at Annex B.

## **AIRCRAFT CRASH**

Approx. 8.5 km North of Mullewa (by road), the Mullewa Airfield receives sporadic use throughout the year by some agricultural aviation operators, and the Royal Flying Doctors Services, in response to a medical emergency.

The 1.44km long landing strip is of gravel construction, and subject to occasional minor flooding, owing to its proximity to the Wooderarrung River. The likelihood of an aircraft crash is considered unlikely, given the low volume of aircraft traffic operating in the area, however the airfield itself is the most likely location, should an incident occur.

The Mullewa Airfield has pilot activated lighting, a small, open air hanger for waiting passengers/patients, and is scheduled to have a perimeter, stock-control fence installed in FY2016/17. A map of the Mullewa Airfield is available at Annex C.

The Hazard Management Agency responsible for the Air Crash is the Western Australia Police. The exception to this is military/defence aircraft – where an Australian military or any defence aircraft is involved in an air crash emergency, the Australian Defence Force will take over management of the incident from the WA Police.

### **HAZARDOUS MATERIALS EMERGENCIES**

The likelihood of an Industrial Accident occurring is possible given that Mullewa has some commercial industry in the town area.

The following sites have been identified in relation to this threat:

- Compressor Station, Eradu, Bunbury-Dampier Natural Gas Pipeline
- Mullewa Farm Supplies
- Mullewa Engineering Services
- BP Service Station (bulk fuel)
- Liberty Service Station (bulk fuel)

The Hazard Management Agency responsible for Hazardous Materials Emergencies is the Department of Fire & Emergency Services.

### **ROAD CRASH**

The main arterial road through Mullewa is the Geraldton – Mount Magnet Road and this is used extensively for industrial, commercial and private transport. The road is used by road trains that carry mineral resources, bulk fuel, grain and livestock.

The road is also used by travellers transitioning the area, in addition to the local community's use. Seasonally this consists of caravan / camper travellers particularly between May and September.

The Hazard Management Agency responsible for Road Crash is the Western Australia Police.

### **FIRE (including urban & bushfire)**

The threat of bush fires is seasonal, with incidents being most likely between October and April, however the threat of urban fires is constant. Within the Mullewa town area, the Department of Fire & Emergency Services is responsible for fire response, as the town area is a gazetted fire district. Within this gazetted district, the Department of Fire and Emergency Services is the Hazard Management Agency and Controlling Agency. A map of this gazetted fire district is available at Annex D.

Outside of the gazetted fire district, the City of Greater Geraldton is the Controlling Agency, responsible for all fires, excepting where a fire is located in a Nature Reserve – in this instance, the Department of Parks and Wildlife is the Controlling Agency. A map of Nature Reserves proximate to the Mullewa town area is available at Annex E.

## **RAIL CRASH**

The threat of rail crashes is ever present, given the movement of iron ore, zinc and grains via the Aurizon / Brookfield Rail network. The rail network enters the LGA South East of Tardun (in the Morawa Shire), traversing North West to Mullewa, then West-South-West to Geraldton. A private rail terminal (for loading of iron ore onto trains) is located 1.8km West of the Mullewa town area, and adjoins the main arterial rail line 2.8km South West of the town area.

Brookfield Rail Pty Ltd is the Hazard Management Agency and Controlling Agency for Rail Crash, this may be deferred to Western Australia Police or the Department of Fire & Emergency Services, should the situation be deemed to exceed the capacity or capability of Brookfield Rail. A map indicating rail infrastructure is available at Annex F.

## **EARTHQUAKES**

The Mullewa area is located within an earthquake risk zone, although the threat of an earthquake is considered minimal. The last significant earthquake in the area occurred in Meeberrie, approx. 160km North of Mullewa on 29 April 1941.

The Department of Fire & Emergency Services is the Hazard Management Agency and Controlling Agency in response to earthquake(s).

## **ANIMAL or PLANT, PESTS or DISEASES**

With the substantial movement of stock throughout the area the risk of animal or plant pests or diseases can be considered possible. Animal diseases also include those borne by feral animals such as goats, pigs and wild dogs, all of which are frequently noted in Mullewa and surrounding areas.

The Department of Agriculture and Food is the Hazard Management Agency and Controlling Agency in response to Animal or Plant, Pests or Diseases.

## **CYCLONE and/or SEVERE STORM**

The threat of severe weather in the forms of cyclones and/or severe storms is a significant threat to the community. It is however generally considered that early warning of such events would be given in sufficient advance of the incident, to allow for adequate preparation prior to impact.

Western Australia attracts an average of 4 cyclones per year, often at sea, however the 'Central West-West' area of Western Australia (including Mullewa) routinely experiences one cyclone per annum crossing land and impacting the region.

The Department of Fire & Emergency Services is the Hazard Management Agency and Controlling Agency in response to Cyclone and/or Severe Storm.

#### 4. EMERGENCY MANAGEMENT ORGANISATIONS

Pursuant to the Emergency Management Act 2005, the Hazard Management Authority is the agency responsible for the management of an individual incident. Hazard Management Authorities in accordance with WA Emergency Management legislation are as follows:

Hazard	Organisation
Air Crash	WA Police
Animal or plant, pests or diseases	WA Department of Agriculture and Food
Injury or threat to life of persons trapped by the collapse of a structure or landform (collapse)	Department of Fire and Emergency Services (DFES)
Cyclone	DFES
Earthquake	DFES
Loss of or interruption to the supply of electricity that is capable of causing or resulting in loss of life, prejudice to the safety, or harm to the health, of a person (electricity supply disruption)	Public Utilities Office, Dept of Finance <i>(Note: Infrastructure Operators are considered the Controlling Agencies for physical restoration of supply.)</i>
Fire	DFES within gazetted fire districts or where DFES brigade / unit established; Department of Parks and Wildlife (P&W) on land it manages outside gazetted fire districts; and Local government in local government districts outside of gazetted fire districts and P&W land.
Flood	DFES
Loss of or interruption to the supply of natural gas, that is capable of causing or resulting in loss of life, prejudice to the safety, or harm to the health, of a person (gas supply disruption)	Public Utilities Office <i>(Note: Infrastructure Operators are considered the Controlling Agencies for physical restoration of supply.)</i>
Actual or impending spillage, release or escape of a biological, substance that is capable of causing loss of life, injury to a person or damage to the health of a person, property or the environment.	WA Department of Health
Actual or impending spillage, release or escape of a chemical, radiological or other substance that is capable of causing loss of life, injury to a person or damage to the health of a person, property or the environment	DFES
Heatwave	WA Department of Health
Human Epidemic	WA Department of Health
Land Search – for persons lost or in distress, that requires a significant coordination of search operations	WA Police
Loss of or interruption to the supply of liquid fuel	Public Utilities Office



as defined in the Liquid Fuel Emergency Act 1984 (Commonwealth) section 3(1), that is capable of causing or resulting in loss of life, prejudice to the safety, or harm to the health, of a person (liquid fuel supply disruption)	<i>(Note: Infrastructure Operators are considered the Controlling Agencies for physical restoration of supply.)</i>
Actual or impending spillage, release or escape of oil or an oily mixture that is capable of causing loss of life, injury to a person or damage to the health of a person, property or the environment (marine oil pollution)	Department of Transport, Marine Safety
	• State waters;
	• shipping and pilotage waters; and
	• port waters (Level 2/3).
	Port Authority
	• port waters (Level 1).
Petroleum titleholder	• State waters (Level 1).
Marine Search— for persons lost or in distress on inland waterways within the limits of a port or in a fishing vessel or pleasure craft within the limits of a port or at sea	WA Police
Actual or impending event involving a ship that is capable of causing loss of life, injury to a person or damage to the health of a person, property or the environment (marine transport emergency)	DoT Marine Safety
	• State waters;
	• shipping and pilotage waters; and
	• port waters (Level 2/3).
	Port Authority
• port waters (Level 1).	
Radiation Escape from a Nuclear Powered Warship	WA Police
Rail Crash - PTA Network (passenger)	PTA; or WA Police/DFES by agreement
Rail Crash - Brookfield Rail Network (freight)	Brookfield Rail; or WA Police/DFES
Road Crash	WA Police
Space Re-entry Debris	WA Police
Storm	DFES
Terrorist Act	WA Police
Tsunami	DFES

It is essential that the relevant Hazard Management Agency being identified upon the commencement of the emergency, as that agency is responsible, and accountable for directing and managing the emergency.

The site of the emergency control centre shall be the Mullewa Police Station located in Mills Street, Mullewa. If this is not possible then other facilities such as the Council Offices, Fire & Rescue Brigade Station or Mullewa Health Service will be used. Where an emergency affects the entire town area, an alternate command centre will be utilised, as determined at the time such as the Geraldton Police Command Centre, or the CGG Emergency Services Centre.

## 5. COMMUNICATION

Fixed line telephone and mobile phones are the primary means of communications between the emergency management and response organisations and other participating organisations.

The unreliable nature of Mullewa's power supply can see extended outages subsequently affecting mobile telephone towers. This occurrence will mean no mobile phone signal / coverage within the area. In the event of this occurring, organisations should be prepared to utilise vehicle-mounted or hand-held UHF radios, per the communications plan.

A pre-formed communications plan is available at Annex. G.

## 6. HEALTH

The health function incorporates First Aid, Triage, Medical Treatment, Ambulance Transportation, Public Health, Mental Health, Pharmaceutical and Medical supplies. All of the Health Resources to meet these tasks are coordinated by the Nurse Manager at the Mullewa District Hospital.

## 7. WELFARE

Emergency Welfare Services including food/water, evacuation centre establishment, emergency clothing, emergency accommodation, personal services, registration and inquiry, and financial assistance. These services are provided by the Dept. of Child Protection and Family Support. These services are coordinated by the Welfare Coordinator.

It is noteworthy that Emergency Welfare Services may take several hours to mobilise (from Geraldton) and travel to Mullewa. During this time, the management/welfare of evacuees is the responsibility of the authority ordering the evacuation.

The following locations are registered Welfare / Evacuation Centres:

- **Mullewa Recreation Centre** located at 26 Main Road, Mullewa. It is located on high ground, has large parking area, kitchen for food preparation, showers and toilet facilities.
- **Mullewa Youth Centre** located on Stock Street, Mullewa. The Centre has kitchen, toilet and shower facilities, as well as mains powered communications and recreational amenities. Although the Youth Centre is a small facility, it may be suitable for evacuations affecting smaller communities.

The following locations are potential alternate sites, should registered sites be unavailable / un-useable.

- **Mullewa Town Hall** located on the corner of Jose Street and Maitland Road, Mullewa. It is located centrally in the townsite and has public toilets and basic kitchen facilities.
- **Our Lady of Mt Carmel School** situated in Doney Street, Mullewa. It has toilet facilities, large parking area's and mains powered communications facilities.
- **Mullewa District High School** located in Jose Street, Mullewa. It has limited parking facilities but has toilets and mains powered communications facilities.

## **8. EVACUATION ASSEMBLY AREAS**

Designated areas are collection points for community members requiring transport to Welfare Centres, friends or relatives and to departure points in the event of an external evacuation.

The locations of the evacuation assembly areas are listed below and highlighted at Annex H. Subject to the hazard at the time, should different/additional areas be required, they will be designated and promulgated at the time. Evacuations are managed by the WA Police.

- Mullewa Recreation Centre, Main Road, Mullewa.
- Mullewa District High School Oval, Jose Street, Mullewa.
- Our Lady of Mount Carmel School Oval, Doney Street, Mullewa.

## **9. RESCUE**

Rescue operations are conducted by the Mullewa Volunteer Fire & Rescue Service and the Geraldton-Greenough State Emergency Service, to meet specific requirements including fire, toxic and electrical hazard areas, flooding, vertical rescue, general counter disaster rescue and support to statutory authorities in emergencies.

Rescue operations will be managed by the authority conducting the rescue, and the Officer in Charge of that rescue response is to maintain communications with the Emergency Control Centre (where activated).

Should it be necessary to co-ordinate a number of rescue teams within the community, a Rescue Coordinator may be appointed by the Control Authority.

## **10. SURVEY & ASSESSMENT**

Survey & Assessment involves the surveying of damage, assessment of the situation and reporting to the Emergency Control Centre. Additionally, it may be used to disseminate public information to community members. In rural areas the survey and assessment may be conducted through the established bush fire control arrangements, with tasking requested of Fire Control Officers or brigade members. In the townsite of Mullewa, Police will conduct the survey and assessment, in conjunction with the appropriate response organisation and local government personnel.

## **11. PUBLIC INFORMATION**

All public information promulgated is to be released by the Hazard Management Agency. Should public information become a predominant function, a public information officer may be appointed and utilised by that agency.

It has been identified that community members rely on social media, email, and radio broadcasts to remain informed of current emergencies, and required actions. It is however, noteworthy, that [www.emergency.wa.gov.au](http://www.emergency.wa.gov.au) should be utilised, once operational – this website will be a single point of information to the public on all actual and current emergencies.

## **12. RESOURCES**

The resources noted at annexes K through O are generally held within the Mullewa town area, and may be utilised by the relevant agency in response to an emergency. It is noteworthy that resources may need to be formally requested in order for support to be provided. Any request for resources should be made to the listed personnel of the relevant organisation / agency as noted in Annex. I.

In instances where an immediate response from Police, Fire & Rescue, Bushfire Brigades, Ambulance etc. is required, the requestor should contact 000, to have these resources formally activated with the relevant priority.

Where necessary, the Hazard Management Agency may appoint a Planning Officer to their Incident Control structure, whom can determine and procure other necessary resources.

## **13. CONTACT DETAILS**

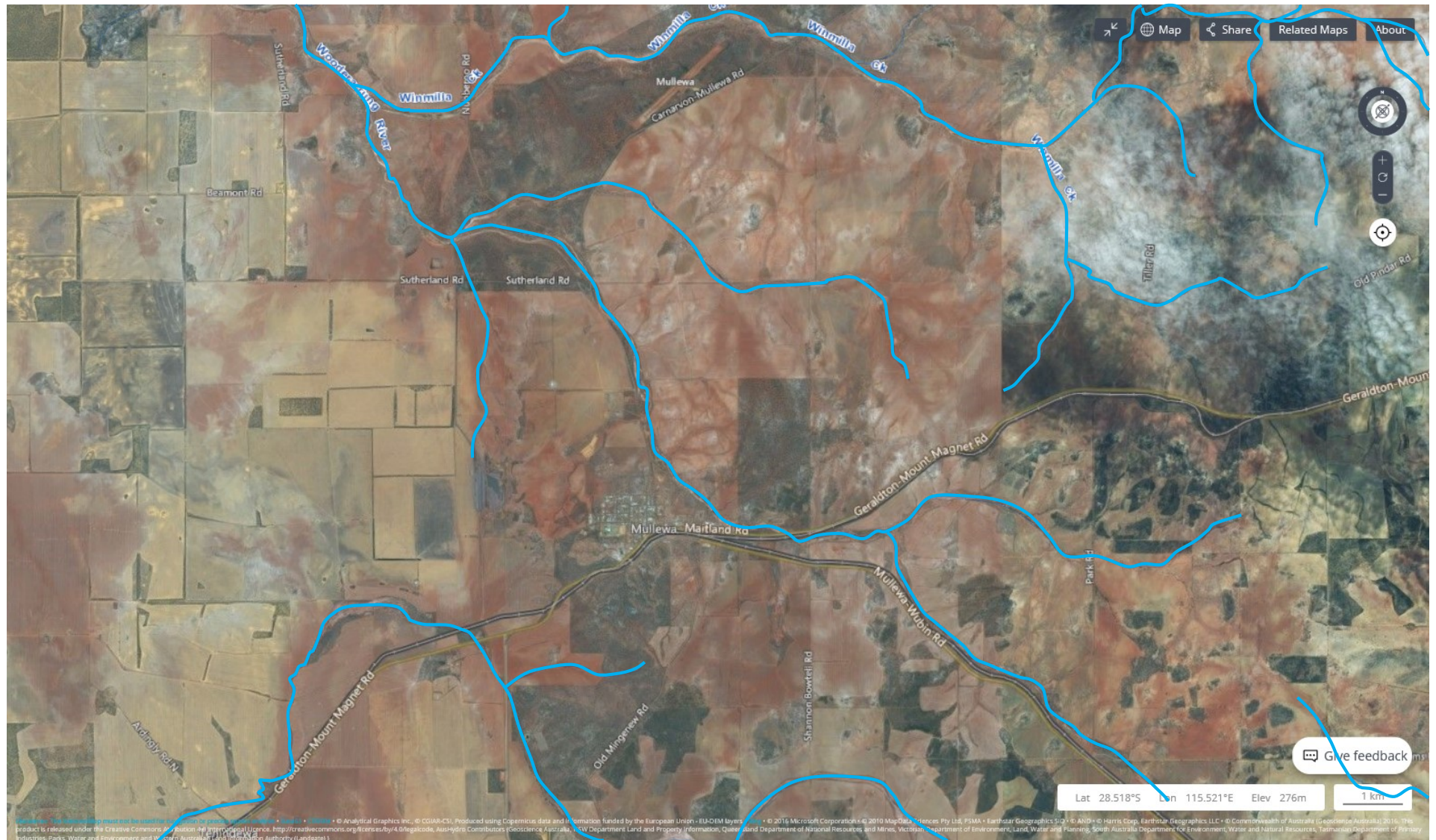
The contact details for key personnel of participating organisations are available at Annex I. It is each agency's responsibility to ensure accuracy of designated names, appointments and phone numbers.

#### **14. ACTIVATION**

The warning of an impending disaster or notification of a disaster occurring may come from a variety of government or public sources. In all cases recipients are to notify the police. Police are responsible for disseminating warnings to key personnel and undertaking the role of Local Emergency Coordinator.

Key personnel of participating organisations are responsible for the activation of their own organisational personnel and resources. This may be done in full or partially depending on the requirements at the time.

# Annex A to Mullewa EMP Local Rivers



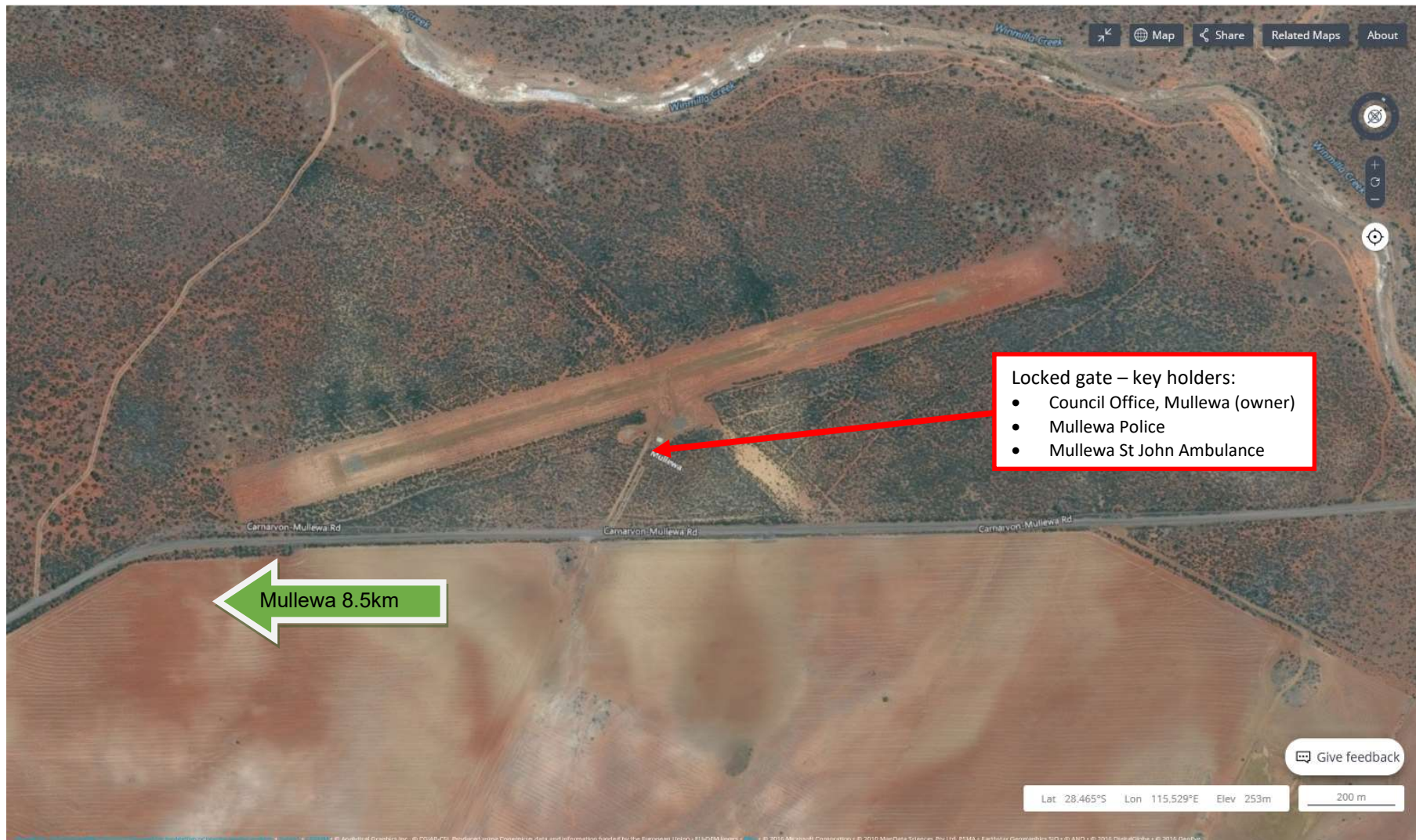


# Annex B to Mullewa EMP Levee system



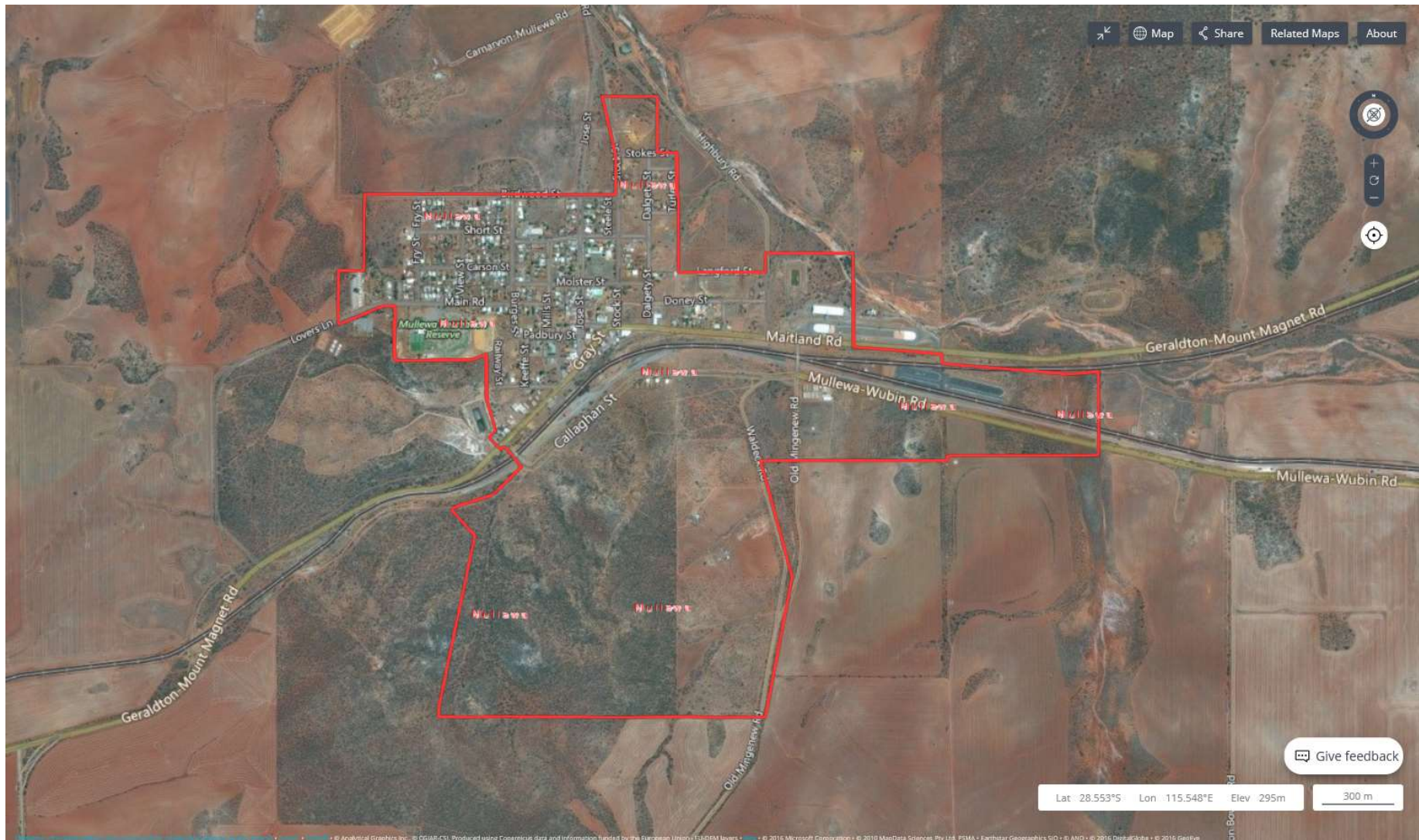


Annex C to Mullewa EMP  
Mullewa Airfield



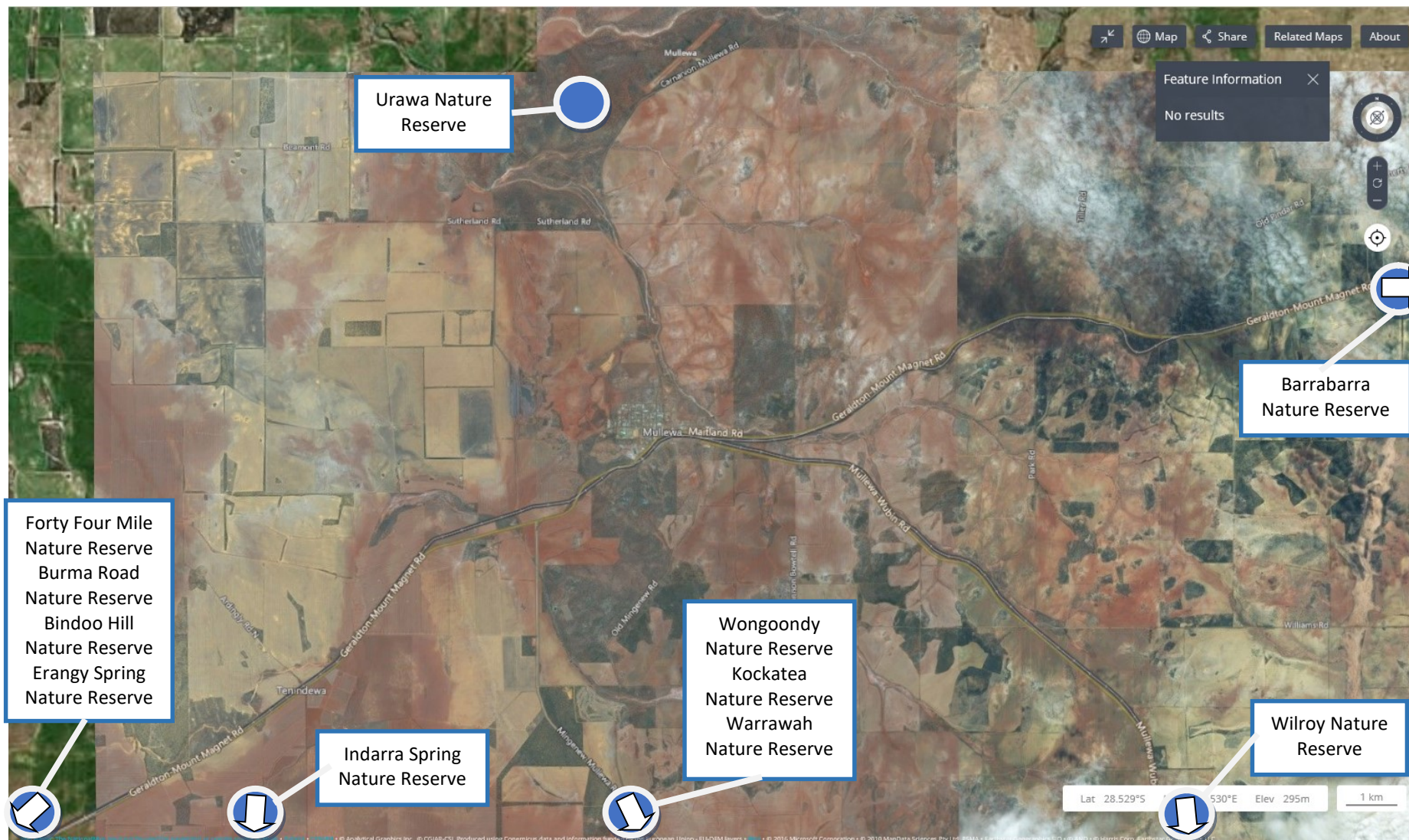


Annex D to Mullewa EMP  
Gazetted Fire District





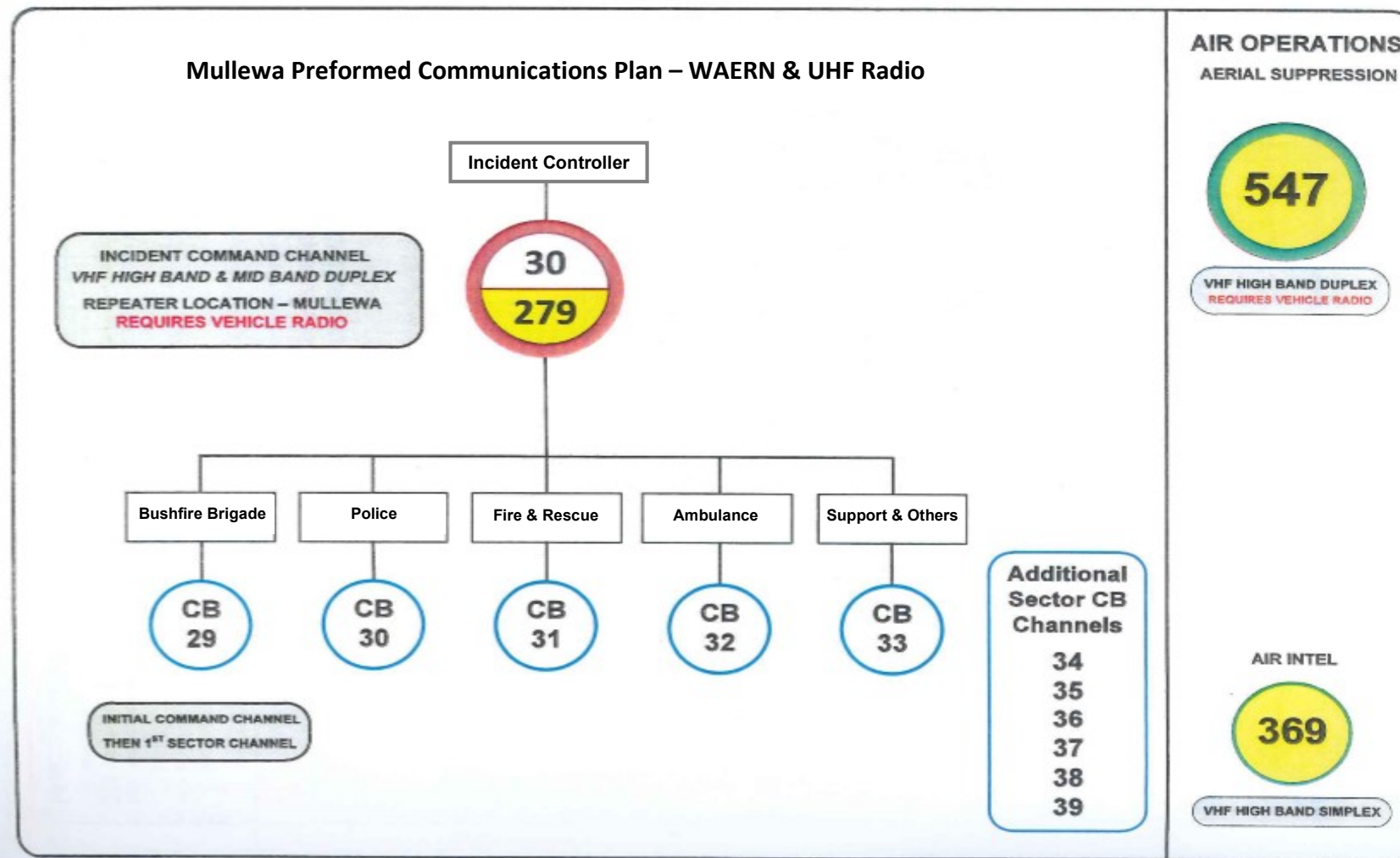
# Annex E to Mullewa EMP Local Nature Reserves





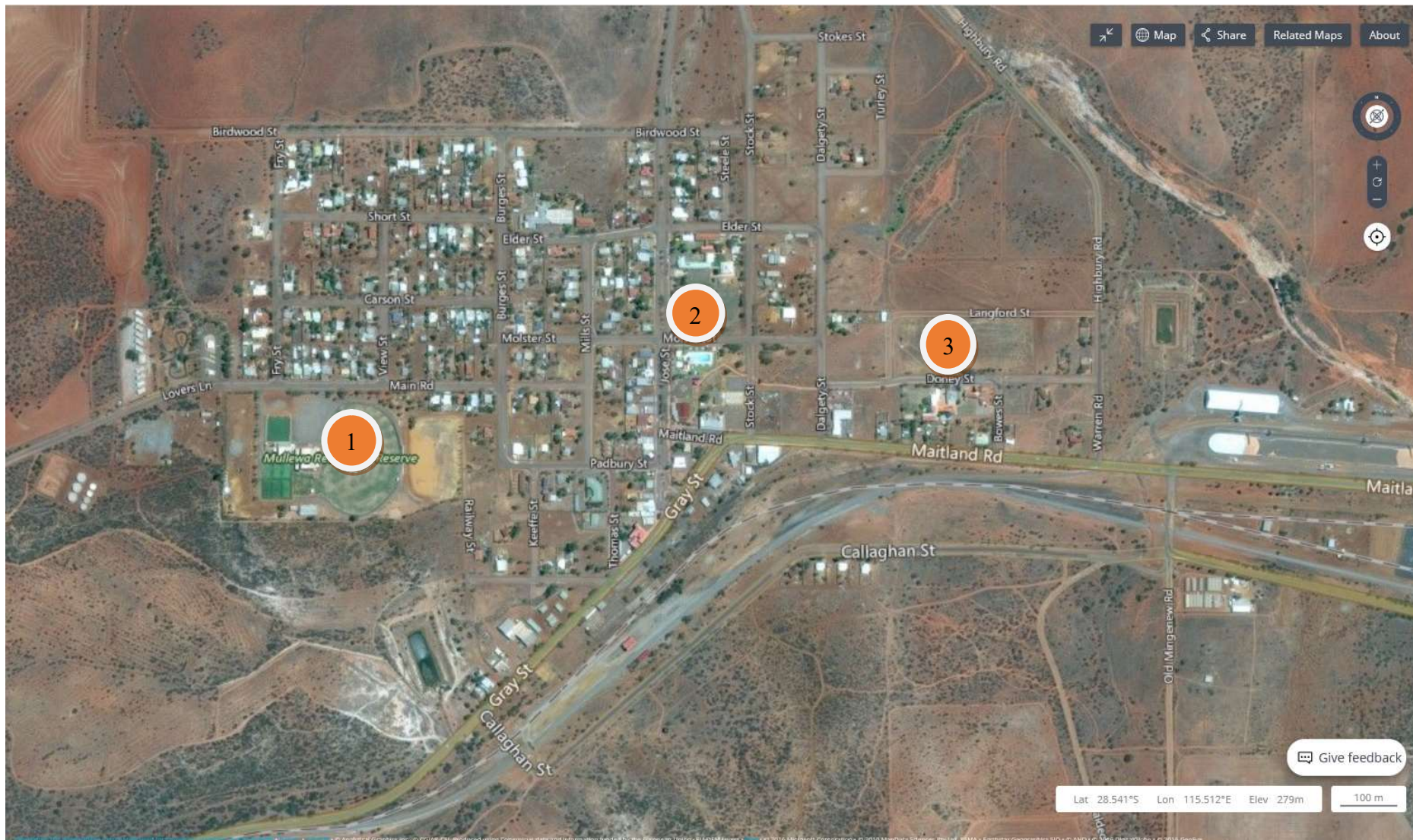
Annex F to Mullewa EMP  
Rail lines







# Annex H to Mullewa EMP Evacuation Assembly Areas



Annex I to Mullewa EMP  
Personnel Contact Details

<b>Organisation</b>	<b>Name</b>	<b>Ph.</b>	<b>Alt.</b>
Mullewa Police	Sgt Ron PACE Geraldton Police	9961 1104 9923 4555	0429 577 815
Dept. Child Protection & Family Support	Kath PARK Keith SHAW	9961 1004 9965 9533	0429 114 554 0429 102 148
Dept. of Education (MDHS)	Nikki PATTERSON Ebony HARPER	9961 1114 9961 1114	0439 908 023
Catholic Education (OLMC)	Di NYMAN Jill HOLLANDS	9961 1120 9961 1120	0417 997 445
Mullewa District Hospital	Nurse Manager	9961 6200	0427 478 642
Local Government, Mullewa	Sam MESSINA Joe Clifford	9956 6643 9956 6727	0447 362 504
Volunteer Fire & Rescue Services	Tony CRUDELI Station PHONE	9961 1606 9961 1200	0429 611 606
Bush Fire Brigade	Darren FULKER	9956 6643	0447 546 922
St John Ambulance	David GOODWIN Allison HEMSLEY	9961 1308 9961 1461	0428 611 308 0408 413 290
Western Power	Geraldton Office Emergency Line	9921 0333 13 13 51	13 10 87
Main Roads	Peter HERBERT Mark SALT	9956 1200 9956 1200	0429 103 207 0429 087 838
W.A. Water Corporation	Emergency Comms Officer	13 13 75 9923 4911	13 13 85 0475 949 011
Brookfield Rail	Control Room Geraldton Office	9274 9727 9964 0332	9212 2800

## **MULLEWA EMERGENCY PLAN DISTRIBUTION LIST**

<b>POLICE</b>	<b>Mullewa Police Station</b>
<b>DEPT CHILD PROTECTION</b>	<b>Mullewa DCPFS Office</b>
<b>FIRE &amp; RESCUE SERVICES</b>	<b>VFRS Station</b>
<b>BUSH FIRE BRIGADE</b>	<b>Mullewa Central BFB Station</b>
<b>HEALTH SERVICES</b>	<b>Mullewa District Hospital</b>
<b>CITY OF GREATER GERALDTON</b>	<b>Council Offices</b>
<b>ST JOHN'S AMBULANCE</b>	<b>Ambulance Sub-Centre</b>
<b>MULLEWA DISTRICT HIGH SCHOOL</b>	<b>Office</b>
<b>OUR LADY MT CARMEL</b>	<b>Office</b>

**RESOURCES REGISTER**

**MULLEWA POLICE STATION**

<b>RESOURCES</b>	<b>HOLDING</b>	<b>LOCATION</b>
<b>MANPOWER</b>	1 X Sergeant 5 x Constable 1 x Part time Civilian CSO	<b>Police Station Burges St, Mullewa</b>
<b>VEHICLES</b>	2 X 4WD Police Vehicles	<b>Police Station Burges St, Mullewa</b>
<b>COMMUNICATION</b>	1 x Base Set HF (Whole of WA).  1 x Base Radio UHF (Regional Coverage)  1 x UHF CB Radio fitted to one of the Police vehicles 4x4  4 x Hand Held UHF Radios (Portable).	<b>Police Station Burges St, Mullewa</b>



**RESOURCES REGISTER**

**CITY OF GREATER GERALDTON  
MULLEWA**

<b>RESOURCES</b>	<b>HOLDING</b>	<b>LOCATION</b>
<b>MANPOWER</b>	20 Staff	Mullewa
<b>VEHICLES</b>	5 X Utilities (1 x 4WD). 1 x 20 Seater Buses. 1 x 5 tonne tip truck 2 x 20 tonne side tipper 1 x 20 tonne low loader 2 x front end loaders 3 x Graders 1 x 24000 litre water tanker 1 x tractors 1 x mini excavator 1 x skid steer bobcat 1 x 4" water pump 3 x rollers	Mullewa Depot Stock St, Mullewa
<b>COMMUNICATION</b>	5 x Utilities with UHF. 3 graders with radios 1 x Base Radio at Office. 1 x Base Radio at Depot.	Mullewa Depot Stock St, Mullewa
<b>POWER SUPPLY</b>	1 X 23 KVA Generator	Mullewa Depot
<b>RESCUE</b>	Various tools, chains, ropes. 2 x Chainsaw Ladders. Numerous road warning signs.	Mullewa Depot Stock St, Mullewa

**RESOURCES REGISTER**

**FIRE & RESCUE SERVICES**

<b>RESOURCES</b>	<b>HOLDING</b>	<b>LOCATION</b>
<b>MANPOWER</b>	12 Members	
<b>VEHICLES &amp; ASSOCIATED EQUIP</b>	<p>1 X Isuzu HSR (Hazmat Structural Rescue) Pump. 1400 litres water &amp; 100 litres AFFF Foam. 6 x Breath App Sets and 12 spare cylinders. 4 x Chemical spillage suits.</p> <p>1 x 4 x 4 Land Cruiser with 450 litres water.</p> <p>Various rescue equipment Jaws of Life &amp; spreaders.</p> <p>Salvage sheets</p> <p>Equipment for house rescues.</p> <p>Lighting Equipment.</p> <p>Oxy Viva. Defibrillator.</p> <p>First Aid Kit</p> <p>Fire Extinguishers 1 x 9kg dry chemical and 1 x 9kg CO2.</p> <p>Chemical Spill Suits</p> <p>Bags for sandbagging</p>	<b>VFRS Station Padbury St, Mullewa</b>
<b>COMMUNICATION</b>	<p>WAFB System.</p> <p>Comms with Brigade Operations in Perth.</p> <p>1 x UHF Radio</p> <p>1 x Satellite phone</p> <p>2 x hand held WAERN</p>	<b>VFRS Station Padbury St, Mullewa</b>

**RESOURCES REGISTER**

**BUSH FIRE BRIGADES**

<b>RESOURCES</b>	<b>HOLDING</b>	<b>LOCATION</b>
<b>MANPOWER</b>	<b>12 Members</b>	
<b>VEHICLES &amp; ASSOCIATED EQUIP</b>	<b>1 X Hino 4.4B Eradu</b>  <b>1 x Isuzu 2.4R Mullewa Central</b>  <b>1 x Isuzu 3.4R Mullewa South</b>  <b>1 x Isuzu 4.4B Tenindewa</b>  <b>All appliances are fitted with firefighting equipment and first aid kits</b>	<b>BFB Station Padbury St, Mullewa</b>
<b>COMMUNICATION</b>	<b>All appliances are fitted with WAERN &amp; UHF Radio</b>	<b>BFB Station Padbury St, Mullewa</b>

**RESOURCES REGISTER**

**ST JOHN AMBULANCE**

<b>RESOURCES</b>	<b>HOLDING</b>	<b>LOCATION</b>
<b>MANPOWER</b>	<b>9 Members</b>	
<b>VEHICLES &amp; ASSOCIATED EQUIP</b>	<b>2 X Ambulances</b>  <b>Range of equipment to extract and carry injured persons</b>	<b>Burges St, Mullewa</b>
<b>COMMUNICATION</b>	<b>Each Ambulance has iPad, Mobile Phone and UHF Radio</b>	<b>Burges St, Mullewa</b>