



AT CORRECT SCALE THIS IS 100 mm



LEGEND

AREA IMPACTED BY 500Yr ARI
 INUNDATION EVENT AND/OR
 SHORELINE MOVEMENT ALLOWANCES
 TO REQUIREMENTS OF SPP 2.6



NOTES

1. INUNDATION EXTENTS BASED ON LIDAR DATA PROVIDED BY THE NORTHERN AGRICULTURAL CATCHMENTS COUNCIL (MARCH 2013). VERTICAL ACCURACY IN THE ORDER OF 0.2m.
2. AERIAL PHOTOGRAPH TAKEN NOVEMBER 2014.



AT CORRECT SCALE THIS IS 100 mm



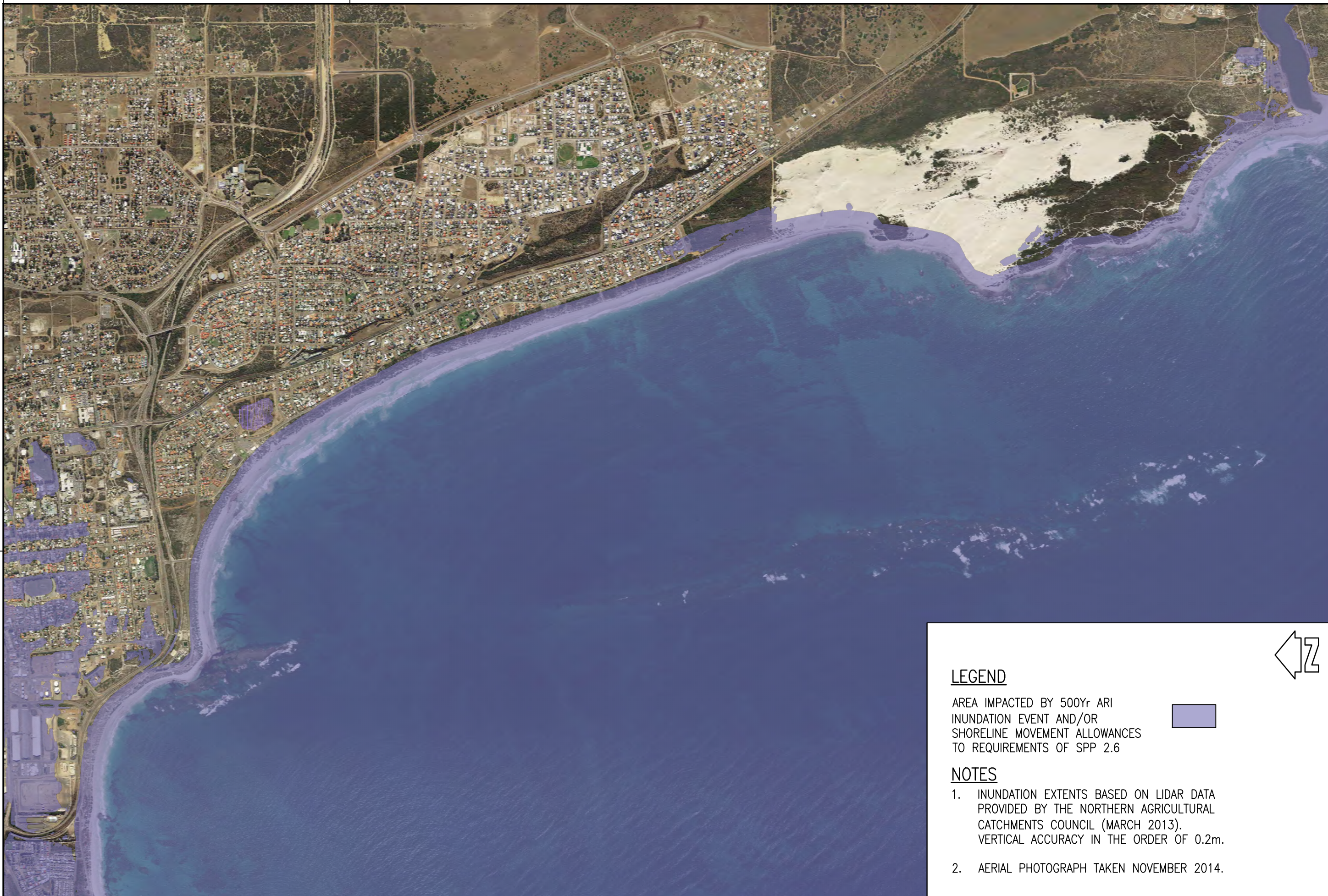
LEGEND

AREA IMPACTED BY 500Yr ARI
 INUNDATION EVENT AND/OR
 SHORELINE MOVEMENT ALLOWANCES
 TO REQUIREMENTS OF SPP 2.6



NOTES

1. INUNDATION EXTENTS BASED ON LIDAR DATA PROVIDED BY THE NORTHERN AGRICULTURAL CATCHMENTS COUNCIL (MARCH 2013). VERTICAL ACCURACY IN THE ORDER OF 0.2m.
2. AERIAL PHOTOGRAPH TAKEN NOVEMBER 2014.



AT CORRECT SCALE THIS IS 100 mm



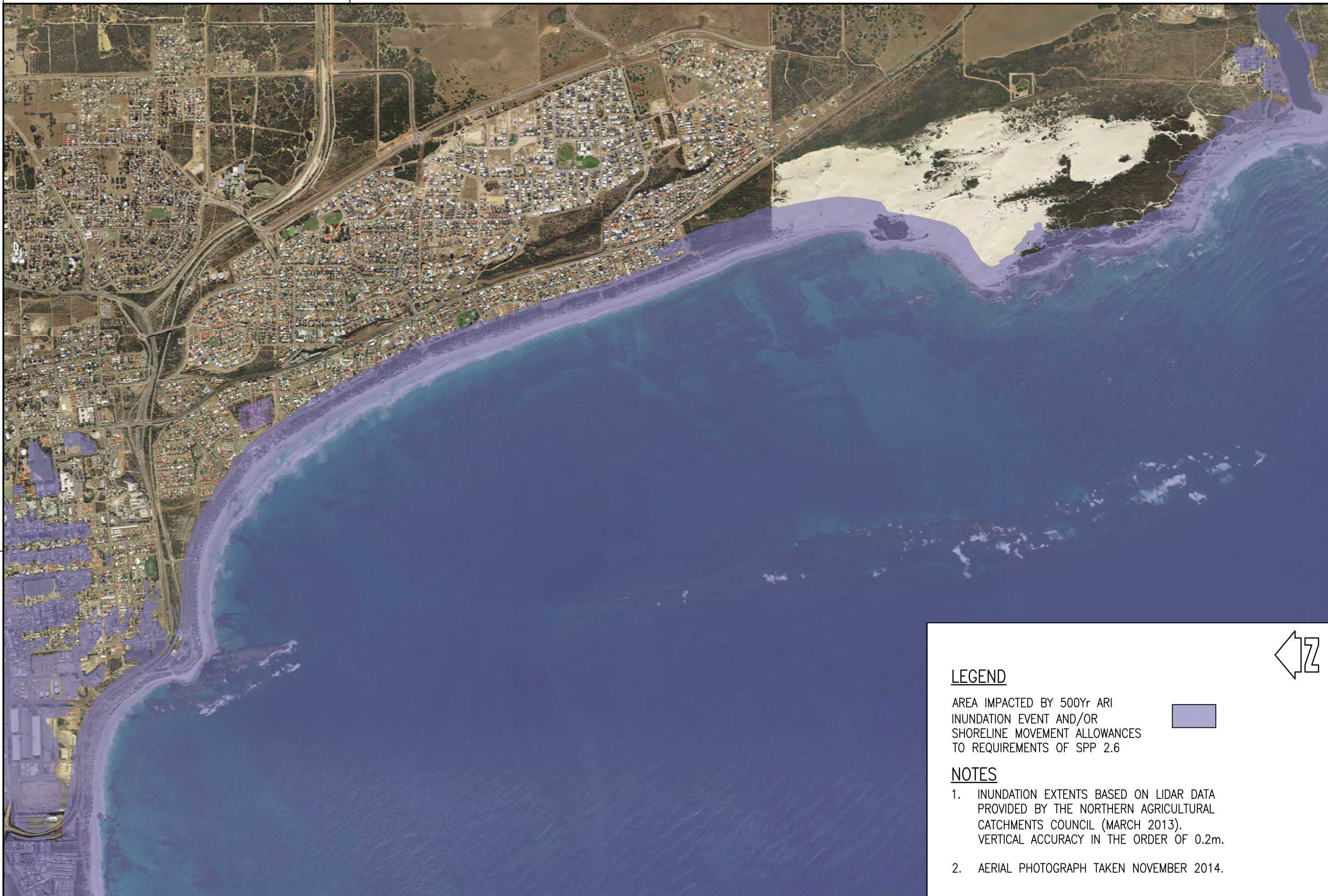
LEGEND

AREA IMPACTED BY 500Yr ARI
 INUNDATION EVENT AND/OR
 SHORELINE MOVEMENT ALLOWANCES
 TO REQUIREMENTS OF SPP 2.6



NOTES

1. INUNDATION EXTENTS BASED ON LIDAR DATA PROVIDED BY THE NORTHERN AGRICULTURAL CATCHMENTS COUNCIL (MARCH 2013). VERTICAL ACCURACY IN THE ORDER OF 0.2m.
2. AERIAL PHOTOGRAPH TAKEN NOVEMBER 2014.



AT CORRECT SCALE THIS IS 100 mm



LEGEND

AREA IMPACTED BY 500Yr ARI
 INUNDATION EVENT AND/OR
 SHORELINE MOVEMENT ALLOWANCES
 TO REQUIREMENTS OF SPP 2.6



NOTES

1. INUNDATION EXTENTS BASED ON LIDAR DATA PROVIDED BY THE NORTHERN AGRICULTURAL CATCHMENTS COUNCIL (MARCH 2013). VERTICAL ACCURACY IN THE ORDER OF 0.2m.
2. AERIAL PHOTOGRAPH TAKEN NOVEMBER 2014.